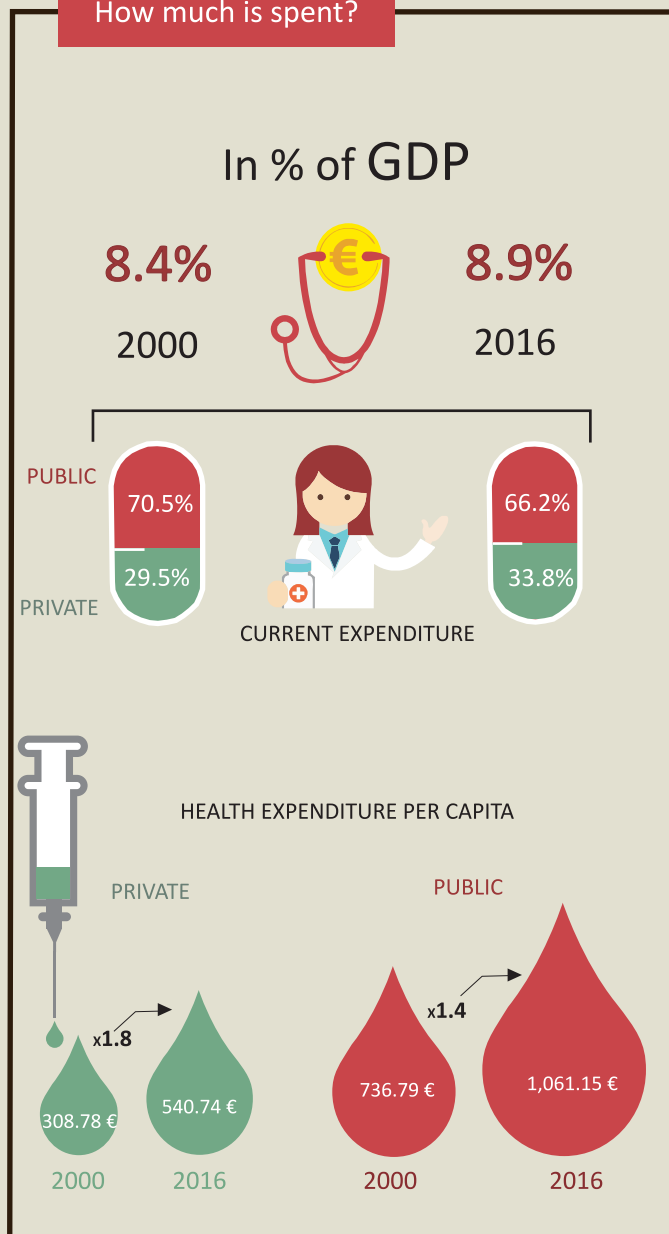


# HEALTH EXPENDITURE IN PORTUGAL

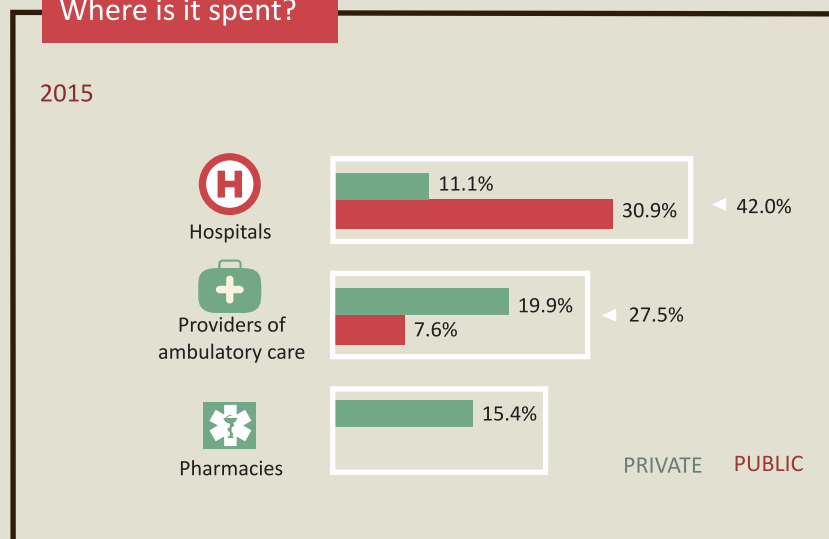


INSTITUTO NACIONAL DE ESTATÍSTICA  
STATISTICS PORTUGAL

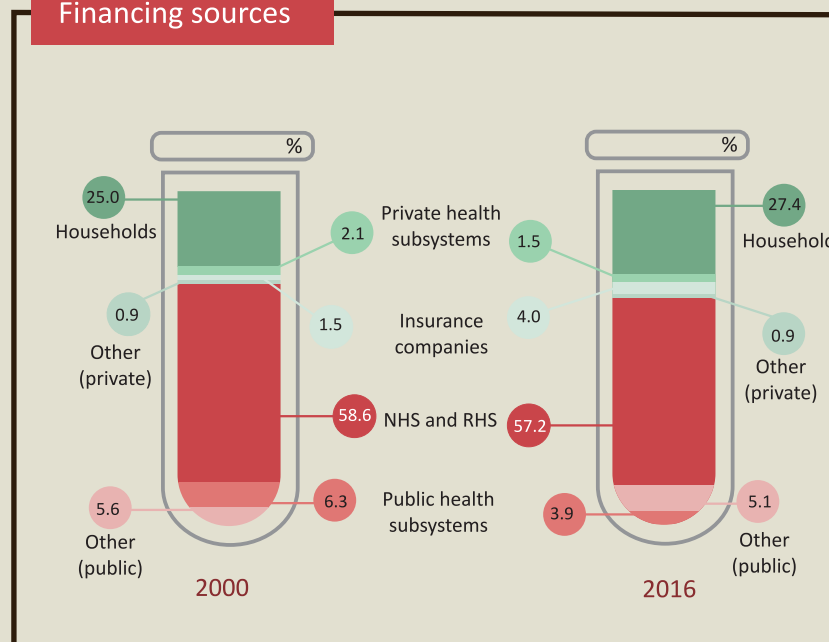
## How much is spent?



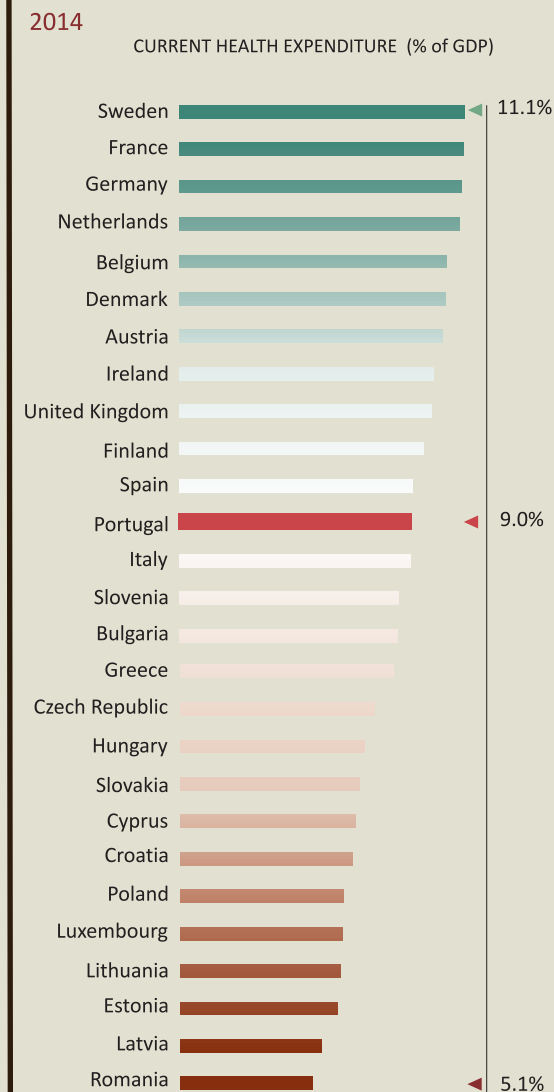
## Where is it spent?



## Financing sources



## EU countries by Health Expenditure



Source: Statistics Portugal, Health Satellite Account, 2000-2016 (2000-2014 [final], 2015 [provisional], 2016 [preliminary]). GDP - Gross Domestic Product; SNS - National Health Service; SRS - Regional Health Services. © INE, I.P., Lisboa • Portugal, 2017

For more information access the Health Satellite Account press release at: [www.ine.pt](http://www.ine.pt)