

February, 8<sup>th</sup> 2016

## Employment Statistics

4<sup>th</sup> quarter of 2016

### The 4<sup>th</sup> quarter unemployment rate was 10.5% and the 2016 average stood at 11.1%

The 4<sup>th</sup> quarter unemployment rate was 10.5%. This value remained unchanged from the previous quarter and decreased by 1.7 percentage points (p.p.) from the same quarter of 2015.

The unemployed population, estimated at 543.2 thousand people, corresponded to a quarterly decrease of 1.2% (6.3 thousand fewer people) and to a year-on-year decrease of 14.3% (90.7 thousand fewer people).

The employed population, estimated at 4,643.6 thousand people, recorded a quarterly decrease of 0.4% (17.9 thousand fewer people) and a year-on-year increase of 1.8% (82.1 thousand more people).

In terms of the annual average, the unemployment rate was 11.1% in 2016, having recorded a decrease of 1.3 p.p. from 2015. The young people (aged 15 to 24) unemployment rate stood at 28.0%, down 4.0 p.p. from the previous year.

The unemployed population, estimated at 573.0 thousand in 2016, decreased by 11.4% from the previous year (73.5 thousand fewer people). The proportion of unemployed looking for a job for 12 months or longer (long-term unemployment) was 62.1%, having decreased by 1.5 p.p. from the former year. The employed population, estimated to be 4,605.2 thousand people, recorded an annual increase of 1.2% (56.5 thousand more people). The participation rate of the working age population stood at 58.5%, down 0.1 p.p. from 2015.

In these estimates, the population aged 15 and over was considered and the values are not seasonally adjusted.

### 1. Labour force (active population)

The Labour Force Survey results for the 4<sup>th</sup> quarter of 2016 indicate that the labour force (active population), estimated at 5,186.8 thousand people, decreased by 0.5% from the previous quarter (24.2 thousand) and by 0.2% from the same quarter of 2015 (8.6 thousand).

The participation rate of the working age population (15 years old and over) stood at 58.6%, having decreased by 0.2 p.p. from the previous quarter and remaining unchanged from the same quarter of 2015.

The participation rate of men (64.2%) exceeded that of women (53.7%) by 10.5 p.p..

Compared to the previous quarter, the participation rate decreased for men (0.5 p.p.) and did not change for women.

On the other hand, regarding the year-on-year comparison, the participation rate decreased by 0.4 p.p. for men and increased by 0.3 p.p. for women.

In terms of the annual average, in 2016, the active population was estimated at 5,178.3 thousand people

and decreased by 0.3% from the previous year (16.9 thousand).

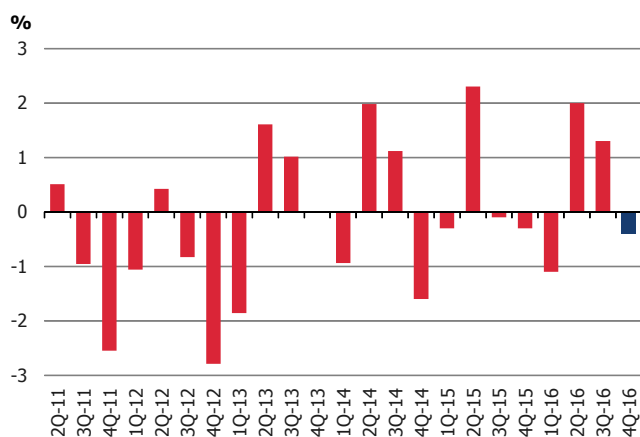
Still in 2016, the participation rate of the working age population was 58.5%, down 0.1 p.p. from 2015.

## 2. Employed population

### 2.1. Quarterly changes

The employed population, estimated at 4,643.6 thousand people, decreased from the previous quarter as has occurred in almost all 4<sup>th</sup> quarters of the data series started in 2011. In the 4<sup>th</sup> quarter 2016, the decrease was 0.4% and affected 17.9 thousand people.

**Figure 1: Employed population quarterly rate of change**



The quarterly decrease of the employed population was mainly explained by the decreases recorded in the following groups: men (23.6 thousand; 1.0%); four out of the five age groups under analysis, particularly those of people aged 25 to 34 (10.0 thousand; 1.1%); people without tertiary education, especially those having completed, at most, the first or second stages of basic education (42.3 thousand; 1.9%); employed in the

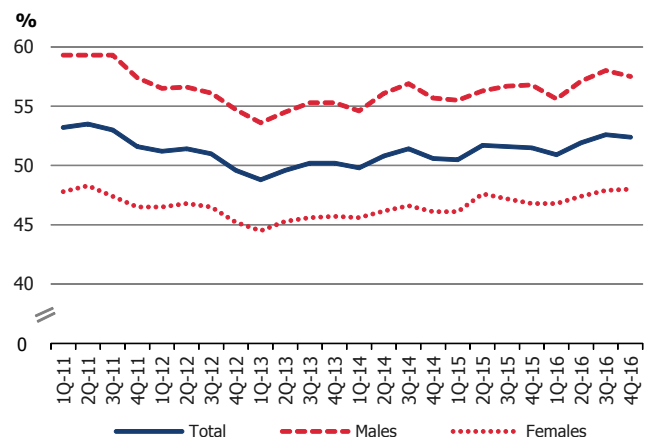
agriculture, forestry and fishing sector (34.5 thousand; 10.1%); self-employed workers (27.1 thousand; 3.4%); and with different work duration regimes, mainly those working full-time (15.9 thousand; 0.4%).

The employment rate (15 years old and over) stood at 52.4%, having decreased by 0.2 p.p. from the previous quarter.

The employment rate of men (57.5%) exceeded that of women (48.0%) by 9.5 p.p..

Still comparing to the previous quarter, the employment rate of men decreased by 0.5 p.p., while that of women increased by 0.1 p.p..

**Figure 2: Employment rate by sex**



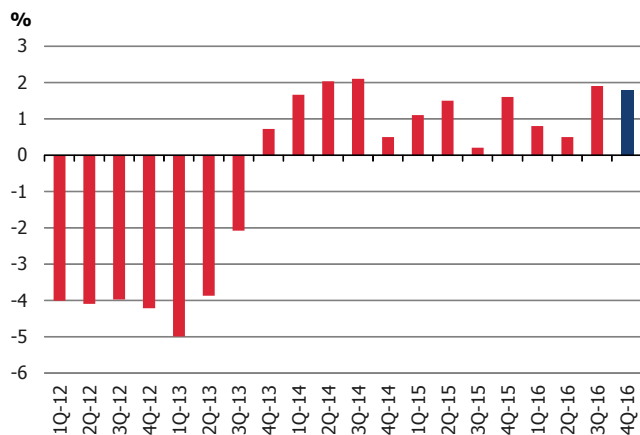
The number of underemployed part-time workers, estimated at 221.2 thousand, corresponded to 4.8% of total employed population and to 40.0% of part-time employed population (note that the number of part-time workers, in the same period, corresponded to 11.9% of total employed population).

The number of underemployed part-time workers increased by 3.8% from the previous quarter (8.1 thousand).

## 2.2. Year-on-year changes

From the same quarter of 2015, the employed population increased by 1.8% (82.1 thousand), extending the series of positive year-on-year changes observed since the 4<sup>th</sup> quarter of 2013.

**Figure 3: Employed population year-on-year rate of change**



The year-on-year increase in the employed population came mostly from the employment increase in the following groups: both men and women, especially the latter (57.2 thousand; 2.6%); people aged 45 to 64 (75.2 thousand; 4.1%); having completed more than the basic education, mainly those having completed the tertiary education (81.7 thousand; 7.1%); employed in the services sector (52.9 thousand; 1.7%); as employees (102.2 thousand; 2.7%), namely with a permanent job (80.8 thousand; 2.8%); and working full-time (95.0 thousand; 2.4%).

The employment rate (aged 15 and over) increased by 0.9 p.p. from the same quarter of 2015. This rate increased more for women (1.2 p.p.) than for men (0.7 p.p.).

The number of underemployed part time workers decreased by 9.0% from the same quarter of 2015 (21.8 thousand).

## 2.3. Annual changes

In 2016, the employed population was estimated at 4,605.2 thousand people and increased by 1.2% from the previous year (56.5 thousand).

The employment rate (15 years old and over) was 52.0%, up 0.7 p.p. from 2015.

For the annual rate of change in the employed population contributed mostly the employment increases in the following groups: women (29.4 thousand; 1.3%); people aged 45 to 64 (57.9 thousand; 3.2%); having completed the tertiary education (62.5 thousand; 5.5%); employed in the services sector (60.0 thousand; 1.9%); as employees (76.6 thousand; 2.1%); and working full-time (73.5 thousand; 1.8%).

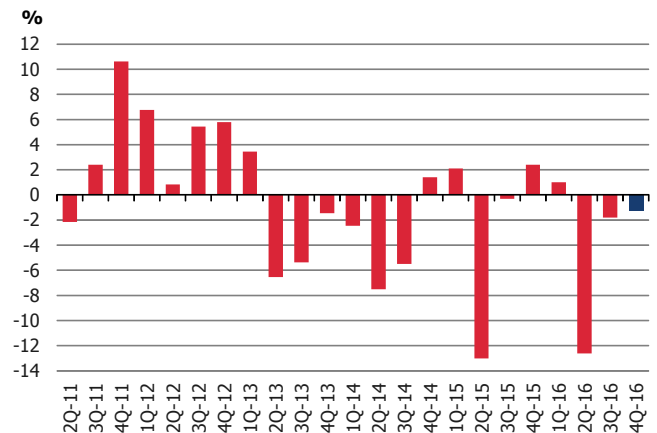
In 2016, the employed population had the following composition:

- By sex: 51.3% of men and 48.7% of women.
- By age group: 5.7% of young people (15 to 24 years old), 20.0% of people aged 25 to 34, 28.4% aged 35 to 44, 40.8% aged 45 to 64, and 5.1% aged 65 and over.
- By level of education: 48.4% of employed people having completed, at most, the first or second stages of basic education, 25.7% the upper secondary and post-secondary non-tertiary education, and 26.0% the tertiary education.

- By activity sector: 6.9% of workers in the agriculture, forestry and fishing sector, 24.5% in the manufacturing, electricity, gas and water supply and construction sector, and 68.6% in the services sector.
- By professional status: 82.2% of employees (of which, 77.7% with a permanent job – work contract of unlimited duration), 17.1% of self-employed workers, and 0.6% of unpaid family workers.
- By work duration regime: 88.1% of full-time workers and 11.9% of part-time workers.

seeking a job for 12 months or longer (9.8 thousand; 2.8%).

**Figure 4: Unemployed population quarterly rate of change**



### 3. Unemployed population

#### 3.1. Quarterly changes

The unemployed population, estimated at 543.2 thousand people, decreased by 1.2% from the previous quarter (6.3 thousand). This decrease contrasts with the increases observed in the last two years in the 4<sup>th</sup> quarter.

The unemployed population quarterly decrease was particularly explained by the decreases recorded in the following groups: both men and women, especially the latter (5.0 thousand; 1.8%); people aged 25 and over, namely those aged 45 and over (6.6 thousand; 3.1%); having completed, at most, the first or second stages of basic education (8.2 thousand; 2.8%); looking for a new job (7.8 thousand; 1.6%), having been formerly in the manufacturing, electricity, gas and water supply, and construction sector (13.8 thousand; 9.5%); and

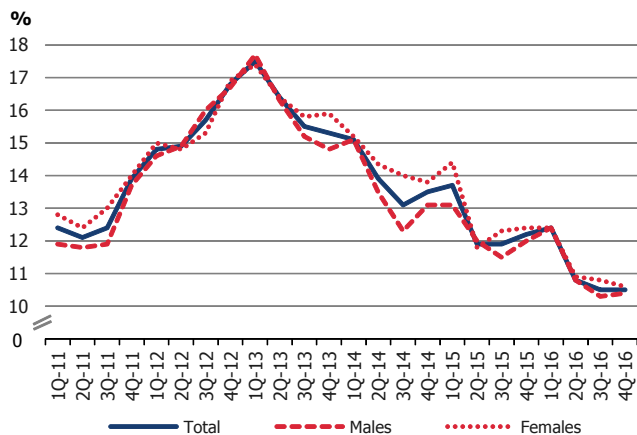
The unemployment rate for the 4<sup>th</sup> quarter of 2016 stood at 10.5%, remaining unchanged from the 3<sup>rd</sup> quarter of 2016 and contrasting with the quarterly decreases observed in the last two quarters<sup>1</sup>.

The unemployment rate of men (10.4%) was lower than that of women (10.6%) by 0.2 p.p..

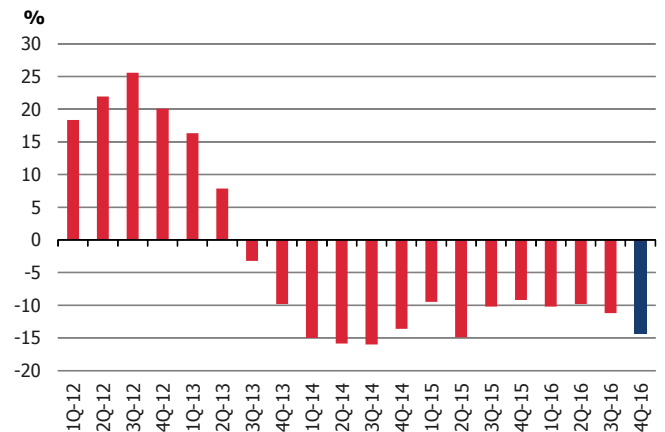
Still comparing to the previous quarter, the unemployment rate decreased for women (0.2 p.p.) and increased for men (0.1 p.p.).

<sup>1</sup> Please note that this unemployment rate was calculated for those aged 15 and over (in line with the concepts in force of the International Labour Organization). The unemployment rate for the moving quarter centered in November 2016 (which corresponds to the 4<sup>th</sup> quarter 2016), published in the Press Release of December 2016 (released in 30-1-2017), was calculated for the age subgroup of those aged 15 to 74 (as in the Eurostat News Release). This rate (not seasonally adjusted) was 10.6%.

**Figure 5: Unemployment rate by sex**



**Figure 6: Unemployed population year-on-year rate of change**



### 3.2. Year-on-year changes

From the same quarter of 2015, the unemployed population decreased by 14.3% (90.7 thousand), extending the series of year-on-year decreases started in the 3<sup>rd</sup> quarter of 2013.

The unemployed population year-on-year decrease was explained by the decreases recorded in the following groups: women (45.4 thousand; 14.5%) and men (45.4 thousand; 14.1%); all age groups under analysis, in particular that of people aged 45 and over (28.7 thousand; 12.2%); with different levels of education, mainly those having completed, at most, the first or second stages of basic education (46.5 thousand; 14.2%); looking for a new job (62.6 thousand; 11.5%), having been formerly in the services sector (34.8 thousand; 10.3%) and in the manufacturing, electricity, gas and water supply, and construction sector (27.8 thousand; 17.4%); and seeking a job for 12 months or longer (57.4 thousand; 14.5%).

The unemployment rate decreased from the same quarter of 2015 (1.7 p.p.), more for women (1.8 p.p.) than for men (1.6 p.p.).

### 3.3. Annual changes

In 2016, there were 573.0 thousand unemployed people, having decreased by 11.4% from the previous year (73.5 thousand).

The unemployment rate was 11.1%, down 1.3 p.p. from the previous year.

For the unemployed population annual rate of change contributed the decreases in the following groups: women (41.5 thousand; 12.8%) and men (32.0 thousand; 9.9%); all age groups under analysis, especially that of people aged 35 to 44 (26.3 thousand; 17.8%); all levels of education, namely that of people having completed, at most, an education level corresponding to the first or second stages of basic education (48.5 thousand; 14.0%); seeking a new job (59.0 thousand; 10.4%), who were formerly in the services sector (37.4 thousand; 10.6%); and seeking a job for 12 months or longer (55.0 thousand; 13.4%).

In 2016, the unemployed population had the following composition:

- By sex: 50.8% of men and 49.2% of women.
- By age group: 17.8% of young people (15 to 24 years old), 23.0% of people aged 25 to 34, 21.2% aged 35 to 44, and 38.1% aged 45 and over.
- By level of education: 52.2% of unemployed having completed, at most, the first or second stages of basic education, 28.8% the upper secondary and post-secondary non-tertiary education, and 19.0% the tertiary education.
- By activity sector: 11.5% of unemployed looking for a first job, and 88.5% looking for a new job (of which, 2.3% coming from the agriculture, forestry and fishing sector, 29.1% from the manufacturing, electricity, gas and water supply, and construction sector and 62.1% from the services sector).
- By duration of search: 37.9% of unemployed seeking a job for less than 12 months and 62.1% looking for a job for 12 months or longer (long-term unemployment).

#### 4. Inactive population

The inactive population, estimated at 5,107.4 thousand people, increased by 0.3% from the previous quarter (16.2 thousand) and decreased by 0.3% from the same quarter of 2015 (16.2 thousand).

The inactive population aged 15 and over, estimated at 3,667.4 thousand people (71.8% of total inactive population), increased by 0.6% from the previous

quarter (20.7 thousand) and by 0.1% from the 4<sup>th</sup> quarter of 2015 (2.6 thousand).

The inactivity rate (15 years old and over) stood at 41.4%, having increased by 0.2 p.p. from the previous quarter and remaining unchanged from the same period of 2015.

The inactivity rate of women (46.3%) exceeded that of men (35.8%) by 10.5 p.p..

From the previous quarter, the inactivity rate increased for men (0.5 p.p.) and remained unchanged for women. When compared to the same quarter of 2015, the inactivity rate of men increased by 0.4 p.p. while that of women decreased by 0.3 p.p..

The number of persons seeking work but not immediately available, estimated at 19.8 thousand, corresponded to 0.5% of the inactive population aged 15 and over. That value increased by 7.9% (1.4 thousand) from the previous quarter and decreased by 20.1% (5.0 thousand) from the same quarter of 2015.

The number of persons available to work but not seeking, estimated at 235.4 thousand, corresponded to 6.4% of the inactive population aged 15 and over. That value decreased by 6.2% from the previous quarter (15.4 thousand) and by 4.0% from the same quarter of 2015 (9.9 thousand).

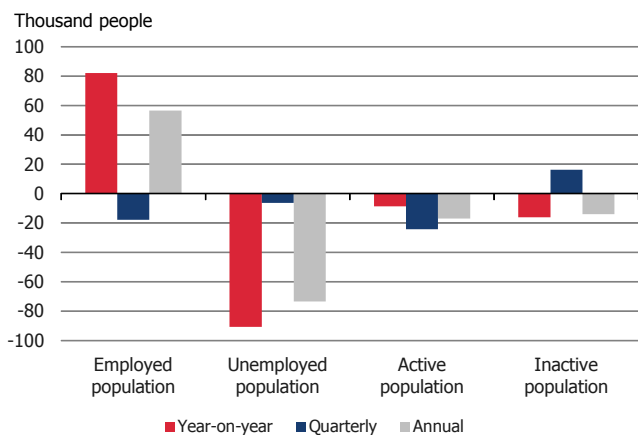
In 2016, the total inactive population was estimated at 5,128.1 thousand people and decreased by 0.3% from the previous year (13.9 thousand). The inactive population aged 15 and over stood at 3,680.4 thousand people and increased by 0.3% (9.4 thousand).

The inactivity rate was 41.5%, up 0.1 p.p. from 2015.

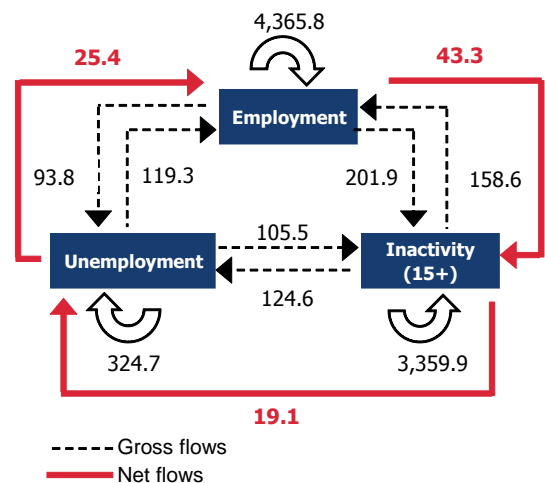
Figure 7 exhibits a summary of the observed changes in this quarter (year-on-year and quarterly) and in 2016 by labour market status, as described in items 1 to 4 of this Press Release.

As a consequence, between the two quarters there was a negative net flow into employment (that is, total inflows minus total outflows) of 17.9 thousand persons (as in the employed population quarterly change).

**Figure 7: Change in the employed, unemployed, active and inactive population**



**Diagram 1: Quarterly flows between labour force states (Thousand people)**



## 5. Quarterly flows between labour market states

### 5.1. Gross and net flows (number of persons)

#### Employment

From the 3<sup>rd</sup> to the 4<sup>th</sup> quarter of 2016, the number of persons that moved from employment (E) to unemployment (U) was 93.8 thousand and the number of those who moved from employment to inactivity (aged 15 and over; I) was 201.9 thousand. The number of persons moving out of employment, within a quarter, was 295.8 thousand.

At the same time, the employment inflows from unemployment were 119.3 thousand persons while those from inactivity were 158.6 thousand. The number of persons moving into employment, within a quarter, was 277.9 thousand.

#### Unemployment

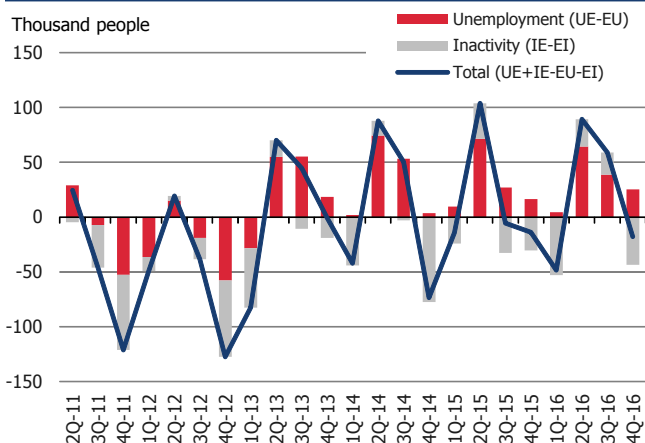
The net flow into unemployment was also negative and comprised 6.3 thousand persons (as the unemployed population quarterly change), which arises from the total of people becoming unemployed (218.5 thousand) being smaller than the total of those leaving the unemployment population (224.8 thousand).

The unemployment inflows from employment (93.8 thousand) were smaller than those from inactivity (124.6 thousand), while the unemployment outflows to employment (119.3 thousand) were larger than those to inactivity (105.5 thousand).

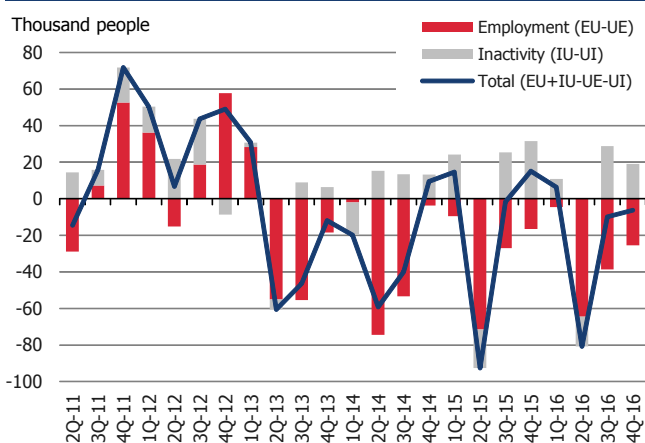
The next figures exhibit the quarterly developments of the net employment and unemployment flows, from the 2<sup>nd</sup> quarter of 2011 onwards, and their decomposition into the two components that explain them: net flows

between employment and unemployment and net flows between employment and inactivity (Figure 8); net flows between unemployment and employment and net flows between unemployment and inactivity (Figure 9).

**Figure 8: Net employment quarterly flows (inflows - outflows = quarterly change)**



**Figure 9: Net unemployment quarterly flows (inflows - outflows = quarterly change)**



From these estimates analysis, it is possible to conclude, for the 4<sup>th</sup> quarter 2016, that:

- The employment quarterly decrease was inherently explained by the negative net flow between employment and inactivity (the number of persons who have moved from employment to inactivity

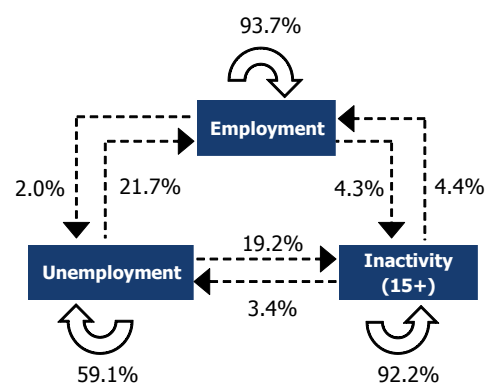
was larger, by 43.3 thousand, than those who moved from inactivity to employment) which more than compensated the positive net flow between employment and unemployment (25.4 thousand).

- The unemployment quarterly decrease, of 6.3 thousand persons, was explained by the negative net flow between unemployment and employment (25.4 thousand), which more than compensated the positive net flow between unemployment and inactivity (19.1 thousand).

### 5.2. Transition rates (%)

From the 3<sup>rd</sup> to the 4<sup>th</sup> quarter of 2016, 2.0% of the people initially employed moved into unemployment and 4.3% moved into inactivity, with the proportion of employed moving out of this situation totalling 6.3% in the 4<sup>th</sup> quarter of 2016 (93.7% remained employed; which corresponds to 4,365.8 thousand people, as in Diagram 1).

**Diagram 2: Quarterly flows between labour force states (as a % of initial state)**



From the total of unemployed persons in the 3<sup>rd</sup> quarter of 2016, 40.9% moved out of this labour market state



in the 4<sup>th</sup> quarter of 2016: 21.7% became employed and 19.2% moved into inactivity.

From the total of people aged 15 and over considered to be inactive in the 3<sup>rd</sup> quarter of 2016, 4.4% moved into employment and 3.4% moved into unemployment in the 4<sup>th</sup> quarter of 2016.

## 6. Unemployment rates by NUTS II region

In the 4<sup>th</sup> quarter of 2016, the unemployment rate was higher than the national average in four NUTS II regions of the country: *Norte* (11.5%), *Área Metropolitana de Lisboa* (11.4%), *Alentejo* and *Região Autónoma da Madeira* (11.0% in both).

The unemployment rate of *Região Autónoma dos Açores* (10.4%), of *Algarve* (9.4%), and of *Centro* (7.9%) stood below the national average.

Compared to the previous quarter, the unemployment rate decreased in all regions, apart from *Área Metropolitana de Lisboa* and *Algarve* (where the rate has increased by 0.5 p.p. and by 2.1 p.p., respectively).

The two major decreases occurred in *Região Autónoma da Madeira* (2.2 p.p.), and *Alentejo* (1.0 p.p.).

Compared to the same quarter of 2015, and similarly to the overall picture in Portugal, the unemployment rate decreased in all regions.

The two largest decreases were recorded in *Região Autónoma da Madeira* (3.7 p.p.), and in *Algarve* (3.5 p.p.).

In 2016, the highest unemployment rates, higher than the national average, were recorded in four regions: *Região Autónoma da Madeira* (12.9%), *Alentejo* (12.1%), *Norte* (12.0%), and *Área Metropolitana de Lisboa* (11.9%).

Below the national average, there were the unemployment rate of *Região Autónoma dos Açores* (11.1%), *Algarve* (9.2%), and *Centro* (8.4%).

Compared to 2015, and again as in the overall picture in Portugal, the unemployment rate decreased in all regions.

The two largest decreases were recorded in *Algarve* (3.3 p.p.), and *Região Autónoma da Madeira* (1.8 p.p.).

## 7. Young people not in employment, education or training

In the 4<sup>th</sup> quarter of 2016, from the total of 2,263.0 thousand young people aged 15 to 34, 13.0% (294.7 thousand) were not in employment, education or training.<sup>2</sup>

<sup>2</sup> **Young people not in employment, education or training:** population of young people of a given age group that, in the reference period, was not employed (i.e., was unemployed or inactive) and was not involved in education or training over a specific period of time (the reference week or in the previous three weeks).

**Rate of young people not in employment, education or training:** ratio between the population of young people of a given age group not in employment, education or training and the total population of young people of the same age group.

**Table 1: Unemployment rates by NUTS II region (NUTS-2013)**

	4Q-2015	3Q-2016	4Q-2016	2015	2016
<b>Portugal</b>	<b>12.2</b>	<b>10.5</b>	<b>10.5</b>	<b>12.4</b>	<b>11.1</b>
Norte	13.5	11.8	11.5	13.7	12.0
Centro	9.0	8.0	7.9	9.2	8.4
A. M. Lisboa	12.5	10.9	11.4	13.1	11.9
Alentejo	13.3	12.0	11.0	13.3	12.1
Algarve	12.9	7.3	9.4	12.5	9.2
R. A. Açores	12.6	10.7	10.4	12.8	11.1
R. A. Madeira	14.7	13.2	11.0	14.7	12.9

Source: Statistics Portugal, Labour Force Survey - 4<sup>th</sup> quarter of 2016.

In the quarter under analysis, this group was composed, mainly, of women (50.6%; 149.1 thousand), people aged 25 to 34 (60.2%; 177.3 thousand), having completed, at most, the first or second stages of basic education (46.3%; 136.5 thousand) and unemployed (58.0%; 170.9 thousand).

From the previous quarter, the rate of young people not in employment, education or training decreased by 0.3 p.p. (7.0 thousand), which resulted from the decrease among women (0.8 p.p.; 9.5 thousand) more than compensating the increase observed for men (0.2 p.p.; 2.6 thousand).

The share of young adults aged 15 to 19 who were not in employment, education or training decreased by 1.5 p.p. (8.9 thousand) between the two consecutive quarters. Among the two remaining age groups under analysis, the major quarterly increase occurred among those aged 20 to 24 (0.5 p.p.; 2.0 thousand).

secondary and post-secondary non-tertiary education (0.6 p.p.; 6.8 thousand) or the tertiary education (0.7 p.p.; 3.6 thousand). On the other hand, the rate of those who have completed, at most, the first or second stages of basic education increased by 0.4 p.p. (3.4 thousand).

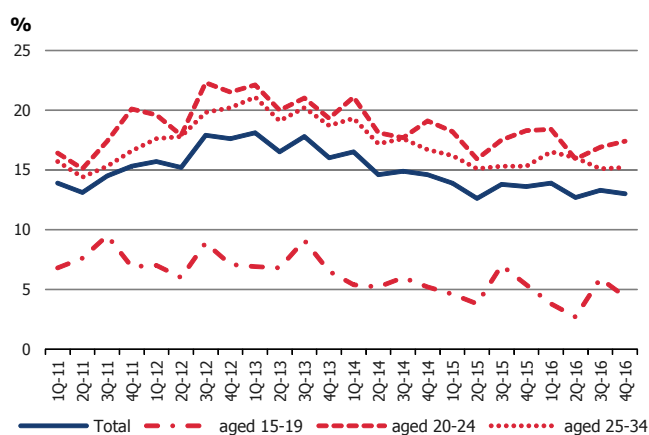
From the 4<sup>th</sup> quarter of 2015, the share of young people aged 15 to 34 that were not in employment, education or training decreased by 0.6 p.p. (17.7 thousand).

This year-on-year decrease resulted from the decline in the number of young women not in employment, education or training (1.4 p.p.; 18.1 thousand), crosses all age groups under analysis, mainly that of people aged 15 to 19 (1.0 p.p.; 6.1 thousand), and was higher among those with tertiary education (2.3 p.p.; 11.2 thousand).

In 2016, from the total of 2,278.6 thousand young people aged 15 to 34, 13.2% (301.1 thousand) were not in employment, education or training.

Comparing to 2015, the share of young people aged 15 to 34 that were not in employment, education or training decreased by 0.3 p.p. (10.7 thousand). This reduction was higher for women (0.5 p.p.; 9.7 thousand), people aged 15 to 19 (1.0 p.p.; 5.5 thousand), and among those with tertiary education (0.9 p.p.; 3.9 thousand).

**Figure 10: Rate of young people aged 15 to 34 years old not in employment, education or training by age group**



By level of education, there was a quarterly decrease of the rate of young people not in employment, education or training among those who have completed the upper

**Table 2: Young people aged 15 to 34 years old not in employment, education or training**

Portugal	Quarterly level			Annual level	
	4Q-2015	3Q-2016	4Q-2016	2015	2016
<b>Number</b>	<b>Thousands</b>				
Total	<b>312.4</b>	<b>301.7</b>	<b>294.7</b>	<b>311.8</b>	<b>301.1</b>
Males	145.2	143.1	145.7	144.5	143.5
Females	167.2	158.6	149.1	167.3	157.6
15 to 19	30.4	33.2	24.3	28.9	23.4
20 to 24	98.9	91.1	93.1	95.3	92.5
25 to 34	183.1	177.3	177.3	187.5	185.2
First and second stages of basic education	126.1	133.1	136.5	135.9	134.8
(Upper) secondary and post-secondary non-tertiary education	119.8	109.8	103.0	113.6	108.0
Tertiary education	66.4	58.8	55.2	62.2	58.3
Unemployed population	197.8	165.3	170.9	196.9	181.5
Inactive population	114.6	136.3	123.8	114.9	119.6
<b>Rate</b>	<b>%</b>				
Total	<b>13.6</b>	<b>13.3</b>	<b>13.0</b>	<b>13.5</b>	<b>13.2</b>
Males	12.7	12.6	12.8	12.5	12.6
Females	14.6	14.0	13.2	14.4	13.9
15 to 19	5.4	5.9	4.4	5.2	4.2
20 to 24	18.3	16.9	17.4	17.5	17.2
25 to 34	15.3	15.1	15.2	15.5	15.7
First and second stages of basic education	13.6	14.8	15.2	14.0	14.5
(Upper) secondary and post-secondary non-tertiary education	14.1	13.0	12.4	13.7	13.0
Tertiary education	12.7	11.1	10.4	12.2	11.3
<b>Proportion of</b>					
Unemployed population	63.3	54.8	58.0	63.1	60.3
Inactive population	36.7	45.2	42.0	36.9	39.7

Source: Statistics Portugal, Labour Force Survey - 4<sup>th</sup> quarter of 2016.

**Table 3: Main indicators - active and employed population**

Portugal	Quarterly level			Annual level		Rate of change		
	4Q-2015	3Q-2016	4Q-2016	2015	2016	On year	On quarter	Annual
	Thousands					%		
<b>Labour force (active population)</b>	<b>5,195.4</b>	<b>5,211.0</b>	<b>5,186.8</b>	<b>5,195.2</b>	<b>5,178.3</b>	<b>-0.2</b>	<b>-0.5</b>	<b>-0.3</b>
Males	2,673.1	2,677.7	2,652.7	2,657.3	2,652.4	-0.8	-0.9	-0.2
Females	2,522.3	2,533.3	2,534.1	2,537.8	2,525.9	0.5	o	-0.5
15 to 24	373.5	369.4	366.8	369.5	364.2	-1.8	-0.7	-1.4
25 to 34	1,067.6	1,051.0	1,040.8	1,083.6	1,054.8	-2.5	-1.0	-2.7
35 to 44	1,447.0	1,435.1	1,425.1	1,443.3	1,429.3	-1.5	-0.7	-1.0
45 to 64	2,058.0	2,106.2	2,105.2	2,053.0	2,091.2	2.3	o	1.9
65 and over	249.2	249.3	248.9	245.8	238.7	-0.1	-0.2	-2.9
First and second stages of basic education (at most)	2,580.9	2,550.6	2,500.0	2,629.7	2,526.3	-3.1	-2.0	-3.9
Upper secondary and post-secondary non-tertiary education	1,343.9	1,354.7	1,345.9	1,316.7	1,347.1	0.1	-0.6	2.3
Tertiary education	1,270.7	1,305.8	1,340.9	1,248.7	1,304.8	5.5	2.7	4.5
<b>Participation rate (%)</b>	<b>50.3</b>	<b>50.6</b>	<b>50.4</b>	<b>50.3</b>	<b>50.2</b>			
Males	54.7	54.9	54.5	54.3	54.4			
Females	46.4	46.7	46.7	46.7	46.5			
<b>Participation rate (15 and over) (%)</b>	<b>58.6</b>	<b>58.8</b>	<b>58.6</b>	<b>58.6</b>	<b>58.5</b>			
Males	64.6	64.7	64.2	64.1	64.1			
Females	53.4	53.7	53.7	53.8	53.5			
<b>Employed population</b>	<b>4,561.5</b>	<b>4,661.5</b>	<b>4,643.6</b>	<b>4,548.7</b>	<b>4,605.2</b>	<b>1.8</b>	<b>-0.4</b>	<b>1.2</b>
Males	2,352.0	2,400.6	2,377.0	2,334.3	2,361.4	1.1	-1.0	1.2
Females	2,209.5	2,260.9	2,266.7	2,214.4	2,243.8	2.6	0.3	1.3
15 to 24	251.2	272.9	265.0	251.5	262.4	5.5	-2.9	4.4
25 to 34	932.0	929.8	919.8	942.0	923.1	-1.3	-1.1	-2.0
35 to 44	1,305.6	1,315.7	1,310.6	1,295.9	1,308.1	0.4	-0.4	0.9
45 to 64	1,829.9	1,898.3	1,905.1	1,819.7	1,877.6	4.1	0.4	3.2
65 and over	242.8	244.8	243.1	239.6	234.0	0.1	-0.7	-2.3
First and second stages of basic education	2,252.3	2,260.3	2,218.0	2,282.2	2,227.4	-1.5	-1.9	-2.4
(Upper) secondary and post-secondary non-tertiary education	1,157.2	1,198.8	1,192.0	1,133.2	1,182.1	3.0	-0.6	4.3
Tertiary education	1,152.0	1,202.4	1,233.7	1,133.3	1,195.8	7.1	2.6	5.5
Agriculture, forestry and fishing (a)	323.7	341.8	307.3	342.5	318.4	-5.1	-10.1	-7.0
Mining and quarrying; manufacturing; electricity, gas, steam and air conditioning supply; water supply; sewage, waste management and remediation activities; construction (a)	1,113.6	1,132.2	1,159.2	1,107.6	1,128.3	4.1	2.4	1.9
Services (a)	3,124.2	3,187.5	3,177.1	3,098.6	3,158.6	1.7	-0.3	1.9
Employees	3,734.9	3,822.9	3,837.1	3,710.6	3,787.2	2.7	0.4	2.1
With a permanent job (work contract of unlimited duration)	2,906.7	2,966.7	2,987.5	2,895.5	2,943.2	2.8	0.7	1.6
With a temporary job (work contract of limited duration)	701.3	709.5	704.0	687.3	705.4	0.4	-0.8	2.6
Other contractual arrangements	126.9	146.7	145.6	127.8	138.6	14.7	-0.7	8.4
Self-employed workers	805.6	808.4	781.3	815.0	789.1	-3.0	-3.4	-3.2
Unpaid family workers	21.0	30.2	25.2	23.0	29.0	19.8	-16.5	26.0
Full-time workers	3,995.1	4,106.0	4,090.1	3,982.3	4,055.8	2.4	-0.4	1.8
Part-time workers	566.5	555.5	553.5	566.4	549.5	-2.3	-0.4	-3.0
Underemployed part-time workers	243.0	213.1	221.2	239.5	226.7	-9.0	3.8	-5.3
<b>Employment rate (15 and over) (%)</b>	<b>51.5</b>	<b>52.6</b>	<b>52.4</b>	<b>51.3</b>	<b>52.0</b>			
Males	56.8	58.0	57.5	56.3	57.1			
Females	46.8	47.9	48.0	46.9	47.5			

Source: Statistics Portugal, Labour Force Survey - 4<sup>th</sup> quarter of 2016.

**Note:**

(a) The estimates are presented by NACE-Rev. 2.

**Conventional signs:**

o Value less than half of the unit used.

**Table 4: Main indicators - unemployed and inactive population**

Portugal	Quarterly level			Annual level		Rate of change		
	4Q-2015	3Q-2016	4Q-2016	2015	2016	On year	On quarter	Annual
	Thousands					%		
<b>Unemployed population</b>	<b>633.9</b>	<b>549.5</b>	<b>543.2</b>	<b>646.5</b>	<b>573.0</b>	<b>-14.3</b>	<b>-1.2</b>	<b>-11.4</b>
Males	321.1	277.1	275.7	323.0	291.0	-14.1	-0.5	-9.9
Females	312.8	272.4	267.4	323.5	282.0	-14.5	-1.8	-12.8
15 to 24	122.3	96.5	101.8	118.1	101.8	-16.8	5.4	-13.8
25 to 34	135.7	121.2	121.0	141.5	131.7	-10.8	-0.1	-6.9
35 to 44	141.4	119.4	114.6	147.5	121.2	-19.0	-4.0	-17.8
45 and over	234.5	212.4	205.8	239.5	218.3	-12.2	-3.1	-8.8
First and second stages of basic education (at most)	328.6	290.3	282.1	347.5	299.0	-14.2	-2.8	-14.0
Upper secondary and post-secondary non-tertiary education	186.7	155.8	153.9	183.6	165.0	-17.6	-1.2	-10.1
Tertiary education	118.6	103.4	107.2	115.4	109.0	-9.7	3.6	-5.5
Looking for a first job	91.1	61.6	62.9	80.3	65.9	-30.9	2.2	-18.0
Looking for a new job	542.8	488.0	480.2	566.2	507.2	-11.5	-1.6	-10.4
Agriculture, forestry and fishing (a) (b)	14.0	11.6	14.3	13.1	11.8	2.5	23.2	-9.5
Mining and quarrying; manufacturing; electricity, gas, steam and air conditioning supply; water supply; sewage, waste management and remediation activities; construction (a) (b)	159.8	145.8	132.0	169.7	147.4	-17.4	-9.5	-13.1
Services (a) (b)	338.3	295.3	303.5	352.3	314.9	-10.3	2.8	-10.6
Unemployed by duration of search								
Less than 12 months	239.1	202.4	205.7	235.9	217.4	-14.0	1.7	-7.8
12 months or longer (long-term unemployment)	394.8	347.2	337.4	410.6	355.6	-14.5	-2.8	-13.4
<b>Unemployment rate (%)</b>	<b>12.2</b>	<b>10.5</b>	<b>10.5</b>	<b>12.4</b>	<b>11.1</b>			
Males	12.0	10.3	10.4	12.2	11.0			
Females	12.4	10.8	10.6	12.7	11.2			
Youth (15 to 24)	32.8	26.1	27.7	32.0	28.0			
Long-term	7.6	6.7	6.5	7.9	6.9			
<b>Inactive population</b>	<b>5,123.6</b>	<b>5,091.2</b>	<b>5,107.4</b>	<b>5,142.0</b>	<b>5,128.1</b>	<b>-0.3</b>	<b>0.3</b>	<b>-0.3</b>
Inactive population (15 and over)	3,664.8	3,646.7	3,667.4	3,671.0	3,680.4	0.1	0.6	0.3
Males	1,465.6	1,459.2	1,480.7	1,487.3	1,485.6	1.0	1.5	-0.1
Females	2,199.2	2,187.4	2,186.6	2,183.7	2,194.8	-0.6	o	0.5
15 to 24	726.9	727.7	727.6	732.7	734.0	0.1	o	0.2
25 to 34	127.7	125.6	127.8	127.6	125.6	0.1	1.7	-1.6
35 to 44	116.5	111.9	114.5	128.2	121.1	-1.7	2.4	-5.5
45 to 64	803.3	766.2	770.4	805.2	779.3	-4.1	0.6	-3.2
65 and over	1,890.4	1,915.3	1,927.1	1,877.4	1,920.4	1.9	0.6	2.3
Students	821.6	776.5	815.2	822.3	818.0	-0.8	5.0	-0.5
Fulfilled domestic tasks	414.6	391.7	401.9	414.9	399.6	-3.1	2.6	-3.7
Retired	1,711.2	1,748.0	1,736.9	1,711.5	1,746.4	1.5	-0.6	2.0
Other inactive	717.4	730.5	713.3	722.3	716.5	-0.6	-2.3	-0.8
Persons seeking work but not immediately available	24.8	18.4	19.8	23.3	20.5	-20.1	7.9	-12.1
Persons available to work but not seeking	245.3	250.8	235.4	259.6	237.6	-4.0	-6.2	-8.5
<b>Inactivity rate (15 and over) (%)</b>	<b>41.4</b>	<b>41.2</b>	<b>41.4</b>	<b>41.4</b>	<b>41.5</b>			
Males	35.4	35.3	35.8	35.9	35.9			
Females	46.6	46.3	46.3	46.2	46.5			

Source: Statistics Portugal, Labour Force Survey - 4<sup>th</sup> quarter of 2016.

**Notes:**

(a) The previous employment experience of the unemployed looking for a new job is characterized only for those who had stopped working within the last 8 years. Therefore, the sum of the number of unemployed looking for a new job by economic activity of the last job does not correspond to the total unemployed looking for a new job.

(b) The estimates are presented by NACE-Rev. 2.

**Conventional signs:**

o Value less than half of the unit used.

## TECHNICAL NOTE

The main purpose of the Labour Force Survey is to characterise the population in terms of the labour market. It is a quarterly sample survey, addressed to families occupying the same dwelling in the national territory, which makes available quarterly and annual data.

Most of the characteristics observed in this survey report to the situation in one pre-defined week (from Monday to Sunday), known as reference week. The reference weeks are uniformly distributed throughout the quarters and years. The interviews usually take place in the week following the reference week.

The information is obtained directly, through computer-assisted interview, by using a mixed data collection mode: the initial interview is done face-to-face by an interviewer visiting the household and the other five interviews are done by telephone, if certain requirements are met.

Published data were calibrated by using the population estimates calculated from the final results of Census 2011. Due to rounding, the totals in tables and diagrams do not always match the sum of parts.

For more detailed information consult the Labour Force Survey [methodological document](#) (only in Portuguese) available at the Statistics Portugal website.

### Some concepts

**Participation rate:** ratio between the labour force (active population) and the total population.

$$\text{P.R. (\%)} = (\text{Labour force} / \text{Total population}) \times 100$$

**Participation rate (15 and over):** ratio between the labour force and the working age total population (15 and over).

$$\text{P.R. (\%)} = (\text{Labour force} / \text{Total population 15 and over}) \times 100$$

**Unemployment rate:** ratio between the unemployed population and the labour force.

$$\text{U.R. (\%)} = (\text{Unemployed population} / \text{Labour force}) \times 100$$

**Long term unemployment rate:** ratio between the unemployed population seeking employment for 12 months and over and the labour force.

$$\text{U.R. (\%)} = (\text{Unemployed population seeking employment for 12 months and over} / \text{Labour force}) \times 100$$

**Employment rate (15 and over):** ratio between the employed population and the working age total population (15 and over).

$$\text{E.R. (\%)} = (\text{Employed population} / \text{Total population 15 and over}) \times 100$$

**Inactivity rate (15 and over):** ratio between the working age inactive population (15 and over) and the working age total population (15 and over).

$$\text{I.R. (\%)} = (\text{Inactive population 15 and over} / \text{Total population 15 and over}) \times 100$$

### On year rate of change

The on year (year-on-year) change compares the level of the variable in the current quarter with that of the corresponding quarter of the previous year. This rate of change, considering a seasonal stable pattern is not affected by this type of fluctuation, but may, however, be influenced by specific effects in a given quarter.

### On quarter rate of change

The on quarter (quarterly) change compares the level of the variable over two consecutive periods. Although this indicator permits to monitor the recent pace of the variable, its calculation is particularly influenced by seasonal effects and other more specific effects in one (or both) quarters under comparison.

### Annual rate of change

The annual change compares the average level of the variable for the four quarters of the last year over the average level of the variable for the four quarters of the previous year. Being an average, this indicator is less sensible to sporadic effects in the variable.

**Next Press Release:** 10 May 2017.