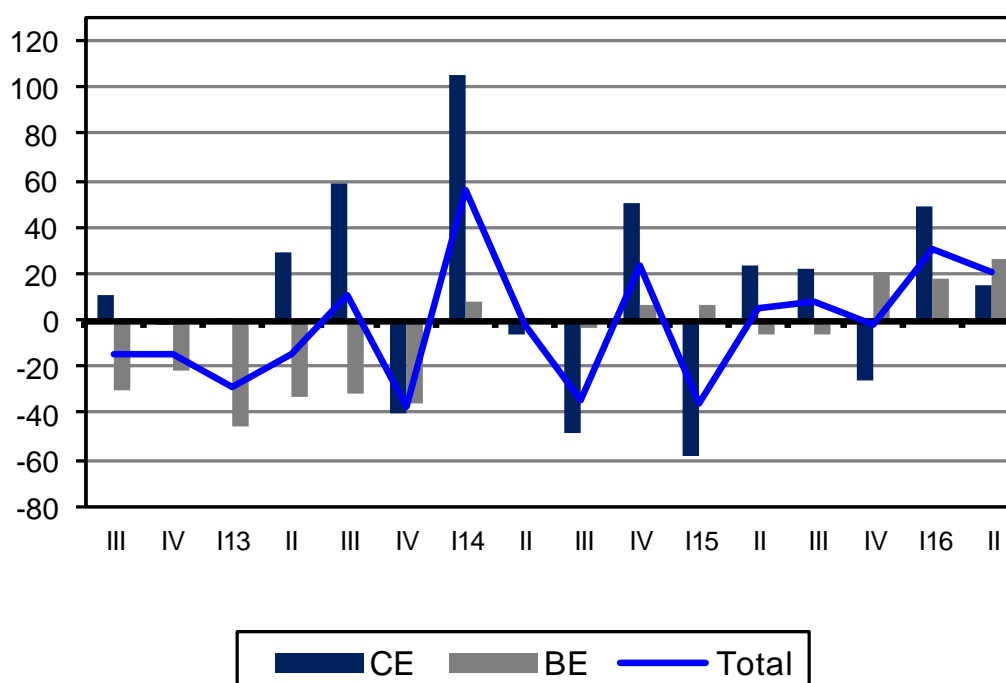


New Orders in Construction Index
Second Quarter 2016

New orders in construction index increased in year-on-year terms

The new orders in construction index presented a year-on-year increase of 20.7% in the second quarter of 2016 (change rate of 30.6% in the previous quarter). This less intense performance was determined by the *Civil Engineering* which moved from a change rate of 49.3% in the first quarter of 2016, to 14.6% in the following quarter. The *Building Construction* sector index presented a year-on-year change rate 26.2% (17.2% in the previous quarter).



On this press release, the INE presents a new series of the New orders in construction index - base 2015=100, with retrospective values since January 2010. The main change in this new series is the refreshment of the weight structure, resulting from Annual National Accounts.

Beyond the impact from weights change, revisions of building permits were included, and reflect an upward revision annual average change rate of 2015:

Total	Building Construction	Civil Engineering
2,1	2,7	0,0

New Orders in Construction Index

BASE 2015=100

	Total	Building Construction	Civil Engineering
Weight	100,00	53,15%	46,85%
Indices			
I ₁₃	93,0	89,1	97,4
II	91,0	98,1	82,9
III	165,0	101,3	237,2
IV	77,8	88,7	65,4
I ₁₄	144,9	95,7	200,7
II	89,1	99,1	77,7
III	109,0	97,4	122,2
IV	96,4	94,6	98,3
I _{15*}	93,1	102,1	82,9
II*	93,9	92,6	95,4
III*	118,1	91,5	148,3
IV	94,8	113,7	73,4
I _{16*}	121,7	119,7	123,8
II	113,3	116,9	109,3
Quarterly Change Rate (%)			
I ₁₃	-24,9	-35,0	-10,5
II	-2,2	10,0	-14,9
III	81,4	3,3	186,2
IV	-52,8	-12,4	-72,4
I ₁₄	86,2	7,9	207,0
II	-38,5	3,5	-61,3
III	22,4	-1,7	57,3
IV	-11,6	-2,8	-19,6
I _{15*}	-3,3	7,9	-15,6
II*	0,8	-9,3	15,0
III*	25,8	-1,2	55,5
IV	-19,7	24,3	-50,5
I _{16*}	28,3	5,3	68,8
II	-6,9	-2,4	-11,8
Year-on-Year Change Rate (%)			
I ₁₃	-29,5	-45,7	1,2
II	-15,4	-33,1	29,2
III	10,9	-31,6	59,4
IV	-37,2	-35,3	-39,9
I ₁₄	55,8	7,4	106,0
II	-2,1	1,0	-6,3
III	-33,9	-3,9	-48,5
IV	23,9	6,6	50,4
I _{15*}	-35,7	6,7	-58,7
II*	5,4	-6,6	22,8
III*	8,4	-6,0	21,4
IV	-1,6	20,2	-25,4
I _{16*}	30,6	17,2	49,3
II	20,7	26,2	14,6
Average change rate over 4 quarters (%)			
I ₁₃	-29,0	-33,2	-22,5
II	-18,5	-32,5	8,0
III	-11,4	-33,0	25,2
IV	-16,7	-36,7	15,5
I ₁₄	1,2	-26,3	39,8
II	4,4	-18,5	32,6
III	-11,0	-10,5	-11,5
IV	2,9	2,5	3,3
I _{15*}	-19,0	2,4	-35,0
II*	-17,7	0,5	-31,3
III*	-4,6	0,0	-8,8
IV	-8,9	3,4	-19,8
I _{16*}	10,6	6,2	15,7
II	14,2	14,3	14,0

NOTES	Quarterly Change Rate = [Quarter n (Year N) / Quarter n-1 (Year N)] * 100 - 100
	Year-on-Year Change Rate = [Year N [Quarter (n)] / Year N-1 [Quarter (n)] * 100 - 100
	Average change rate over 4 quarters = [[Quarter (n-3) + ... + Quarter (n)] / [Quarter (n-7) + ... + Quarter (n-4)] * 100 - 100