

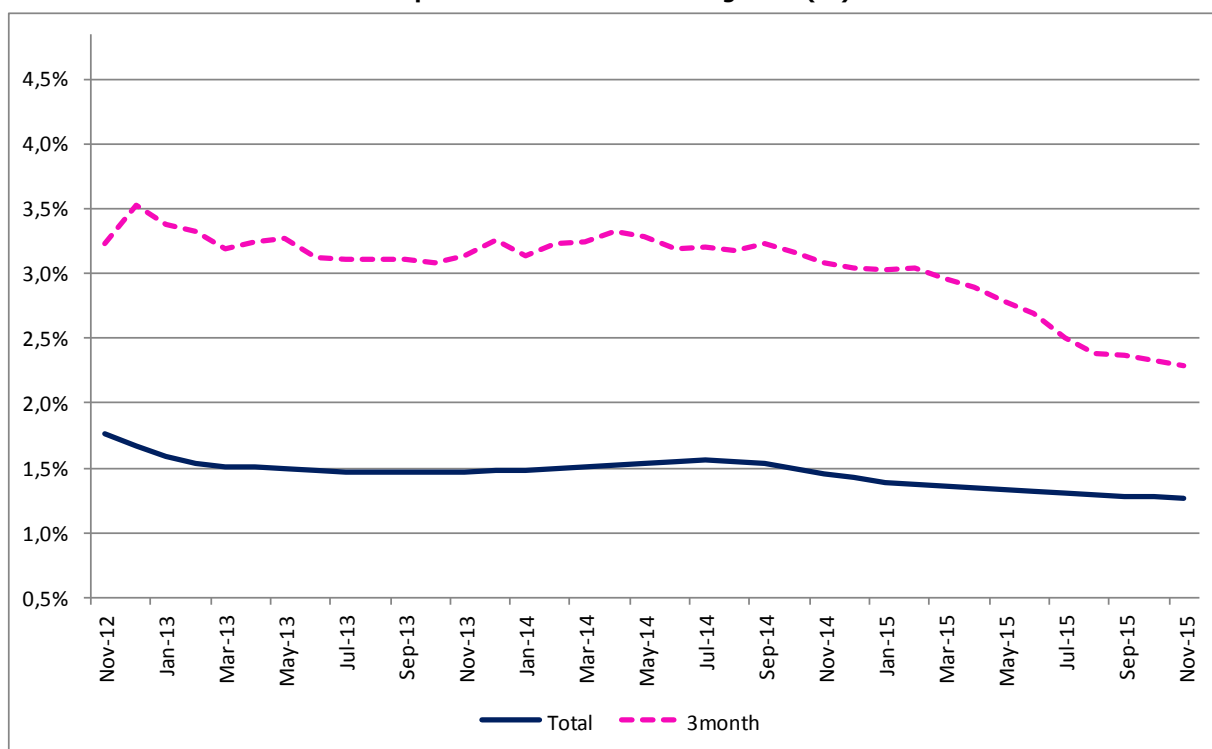
Implicit interest rates in housing loans

November 2015

Interest rate kept diminishing trend and loans repayments increased slightly

The implicit interest rate in all contracts of mortgage loans to households moved from 1.225% in October to 1.219% in November maintaining the downward trend of the last sixteen months. The average value of loans repayments stood at €240, up by €1, from the value observed in previous month.¹

Implicit interest rates in housing loans (%)



¹ For methodological detail see <http://smi.ine.pt/DocumentacaoMetodologica?clear=True> cod 142.
Implicit interest rates in housing loans – November 2015

Monthly Average

Period	Total		3 months	
	from wich Housing Acquisition		from wich Housing Acquisition	

Implicit interest rates in housing loans (%)

Nov-14	1,409%	1,414%	3,038%	2,974%
Dec-14	1,384%	1,379%	2,997%	3,016%
Jan-15	1,340%	1,346%	2,979%	2,921%
Feb-15	1,325%	1,331%	2,987%	2,932%
Mar-15	1,314%	1,323%	2,917%	2,867%
Apr-15	1,300%	1,307%	2,848%	2,800%
May-15	1,285%	1,293%	2,738%	2,680%
Jun-15	1,275%	1,282%	2,644%	2,580%
Jul-15	1,257%	1,264%	2,453%	2,397%
Aug-15	1,242%	1,250%	2,331%	2,282%
Sep-15	1,228%	1,238%	2,317%	2,271%
Oct-15	1,225%	1,233%	2,281%	2,240%
Nov-15	1,219%	1,228%	2,236%	2,190%

Average of owed capital (Euros)

Nov-14	53 217	59 729	77 192	84 537
Dec-14	53 100	59 607	76 311	83 843
Jan-15	53 033	59 562	77 304	83 852
Feb-15	52 976	59 538	78 069	84 572
Mar-15	52 849	59 398	78 093	84 611
Apr-15	52 763	59 301	78 801	85 733
May-15	52 684	59 215	80 383	86 801
Jun-15	52 569	59 097	81 444	87 889
Jul-15	52 512	59 037	82 588	89 542
Aug-15	52 444	58 975	84 536	92 027
Sep-15	52 363	58 874	84 974	92 888
Oct-15	52 248	58 784	85 251	93 329
Nov-15	52 196	58 733	84 496	91 874

Average of due instalment (Euros)

Nov-14	243	265	328	353
Dec-14	243	263	334	375
Jan-15	242	263	325	351
Feb-15	241	262	330	351
Mar-15	241	262	320	345
Apr-15	241	261	317	345
May-15	240	262	317	340
Jun-15	241	262	319	343
Jul-15	241	262	311	335
Aug-15	240	261	309	335
Sep-15	239	261	315	344
Oct-15	239	260	314	343
Nov-15	240	261	304	329