

February, 4<sup>th</sup> 2015

## Employment Statistics

4<sup>th</sup> quarter of 2014

### The unemployment rate estimate was 13.5%

The unemployment rate estimated for the 4<sup>th</sup> quarter of 2014 was 13.5%. This value is up 0.4 percentage points (p.p.) from the previous quarter and down 1.8 p.p. from the same quarter of 2013.

There were 698.3 thousand unemployed people, which corresponds to a quarterly increase of 1.4% and to a year-on-year decrease of 13.6% (more 9.4 thousand and less 109.7 thousand people, respectively).

There were 4 491.6 thousand employed people, which corresponds to a quarterly decrease of 1.6% (less 73.5 thousand people) and to a year-on-year increase of 0.5% (more 22.7 thousand people).

The participation rate of the working age population stood at 58.5%, down 0.7 p.p. from the previous quarter and down 0.8 p.p. from the same quarter of 2013.

In terms of the annual average, the unemployment rate was 13.9% in 2014, recording a decrease of 2.3 percentage points from 2013. There were 726.0 thousand unemployed people, down 15.1% from the previous year (less 129.2 thousand people). The employed population, estimated to be 4 499.5 thousand individuals, recorded an annual increase of 1.6% (more 70.1 thousand people).

#### 1. Labour force (active population)

The Labour Force Survey results for the 4<sup>th</sup> quarter of 2014<sup>1</sup> indicate that the labour force (active population) decreased by 1.2% from the previous quarter (64.2 thousand people) and decreased by 1.6% from the same quarter of 2013 (87.0 thousand).

The participation rate of the working age population (15 years old and over) stood at 58.5%, having decreased by 0.7 p.p. from the previous quarter and by 0.8 p.p. from the same quarter of 2013.

<sup>1</sup> See the note at the end of this Press Release (page 10) on the integration of the 2011 Census results in the Labour Force Survey sample.

The participation rate of men (64.2%) exceeded that of women (53.5%) by 10.7 p.p..

Compared to the previous quarter, the participation rate decreased both for men (0.6 p.p.), as for women (0.7 p.p.).

Compared to the same quarter of 2013, the participation rate decreased for men (0.7 p.p.) and for women (0.8 p.p.).

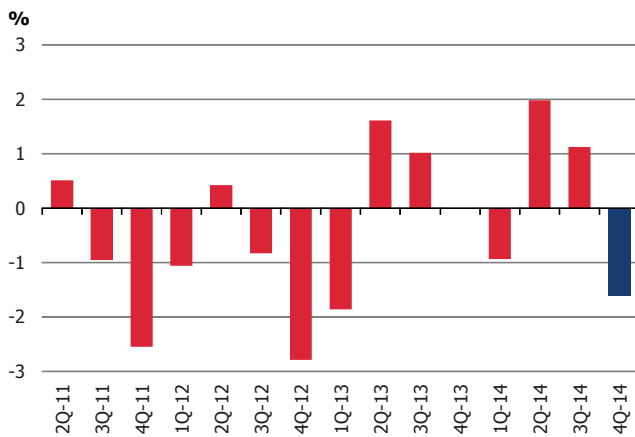
In 2014, the active population decreased by 1.1% from the previous year (59.0 thousand people).

The participation rate of the working age population was 58.8%, down 0.5 p.p. from the previous year.

## 2. Employed population

The employed population decreased by 1.6% from the previous quarter (73.5 thousand people), when it had been observed a positive rate of change.

**Figure 1: Employed population quarterly rate of change**



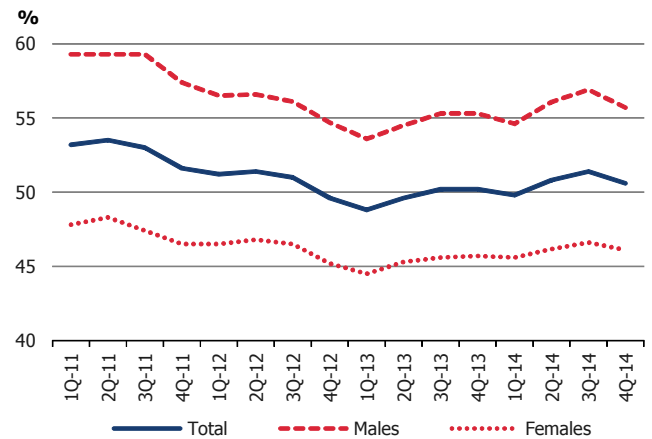
The quarterly decrease in the employed population came mostly from the employment decrease in the following groups: men (50.9 thousand; 2.2%); people aged 65 and over (33.6 thousand; 12.8%); having completed the first and second stages of basic education (97.5 thousand; 4.1%); employed in the agriculture, forestry and fishing sector (58.8 thousand; 14.4%); as self-employed workers (47.5 thousand; 5.5%); and working full-time (59.1 thousand; 1.5%).

The employment rate (15 years old and over) stood at 50.6%, having decreased by 0.8 p.p. from the previous quarter.

The employment rate of men (55.7%) exceeded that of women (46.1%) by 9.6 p.p..

Compared to the previous quarter, the employment rate decreased more for men (1.2 p.p.) than for women (0.5 p.p.).

**Figure 2: Employment rate by sex**

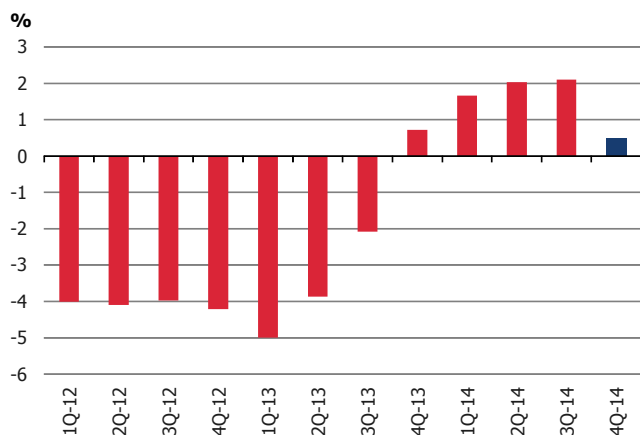


The number of underemployed part-time workers, estimated at 251.7 thousand, corresponded to 5.6% of total employed population and to 43.3% of part-time employed population (note that the number of part-time workers, in the same period, corresponded to 12.9% of total employed population).

The number of underemployed part-time workers increased by 8.4% from the previous quarter (19.6 thousand).

From the same quarter of 2013, the employed population increased by 0.5% (22.7 thousand people).

**Figure 3: Employed population year-on-year rate of change**



The year-on-year increase in the employed population came mostly from the employment increase in the following groups: women (21.1 thousand; 1.0%); people aged 35 to 44 (30.7 thousand; 2.4%); having completed the tertiary level of education (117.0 thousand; 11.6%); employed in the services sector (62.7 thousand; 2.1%); as employees (145.3 thousand; 4.1%); and working full-time (66.8 thousand; 1.7%).

The employment rate (15 years old and over) increased by 0.4 p.p. from the same quarter of 2013, having increased equally for men and women (0.4 p.p.).

The number of underemployed part time workers decreased by 2.9% from the same quarter of 2013 (7.4 thousand).

In the 4<sup>th</sup> quarter of 2014, the employed population had the following composition:

- By sex: 51.4% of men and 48.6% of women.
- By age group: 5.4% of young people (15 to 24 years old), 20.9% of people aged 25 to 34, 28.7% aged 35 to 44, 39.8% aged 45 to 64 and 5.1% aged 65 years old and over.

- By level of education: 50.6% of employed people having completed the first or second stages of basic education, 24.4% the (upper) secondary and post-secondary non-tertiary education and 25.0% the tertiary education.
- By activity sector: 7.8% of workers in the agriculture, forestry and fishing sector, 23.9% in the manufacturing, electricity, gas and water supply and construction sector and 68.3% in the services sector.
- By labour status: 81.5% of employees (of which, 78.4% with a permanent job – work contract of unlimited duration), 18.1% of self-employed workers and 0.5% of unpaid family workers.
- By work duration regime: 87.1% of full-time workers and 12.9% of part-time workers.

In 2014, the employed population increased by 1.6% from the previous year (70.1 thousand people).

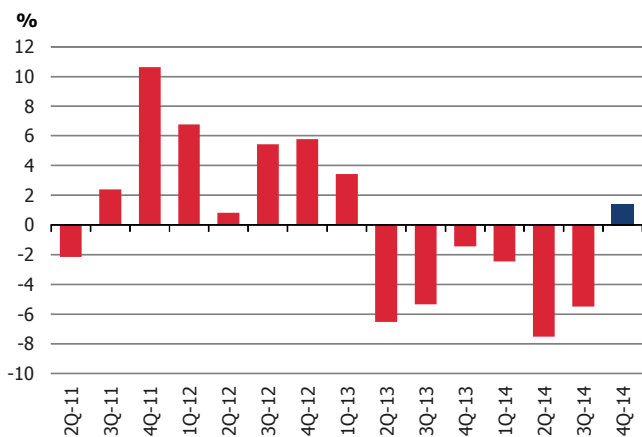
The employment rate was 50.7%, up 1.0 p.p. from 2013.

### 3. Unemployed population

The unemployed population, estimated at 698.3 thousand people, increased by 1.4% from the previous quarter (9.4 thousand people).

The quarterly increase recorded in the 4<sup>th</sup> quarter of 2014 interrupts the period of six consecutive quarters of negative rates of change of the unemployed population.

**Figure 4: Unemployed population quarterly rate of change**



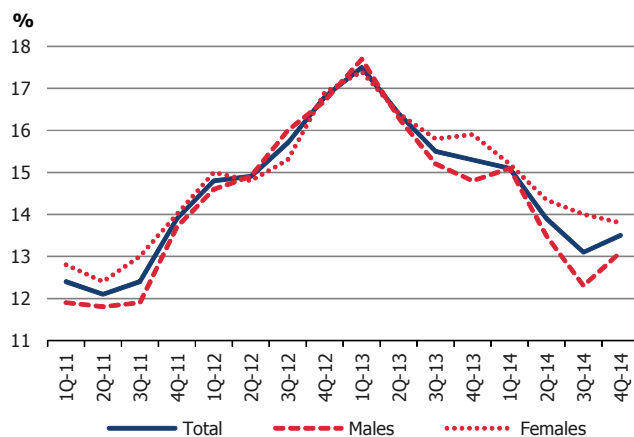
The unemployed population quarterly increase came mostly from the following groups: men (19.4 thousand; 5.9%); people aged 45 and over (9.8 thousand; 4.1%); having completed an education level corresponding to the (upper) secondary and post-secondary non-tertiary education (12.8 thousand; 7.0%); seeking a new job (19.9 thousand; 3.3%), who were formerly in the services sector (11.1 thousand; 3.0%); and seeking a job for less than 12 months (20.3 thousand; 8.9%).

The unemployment rate stood at 13.5%, up 0.4 p.p. from the previous quarter. This indicator increased after a period of six consecutive quarters of negative rates of change.

The unemployment rate of men (13.1%) was lower than that of women (13.8%) by 0.7 p.p..

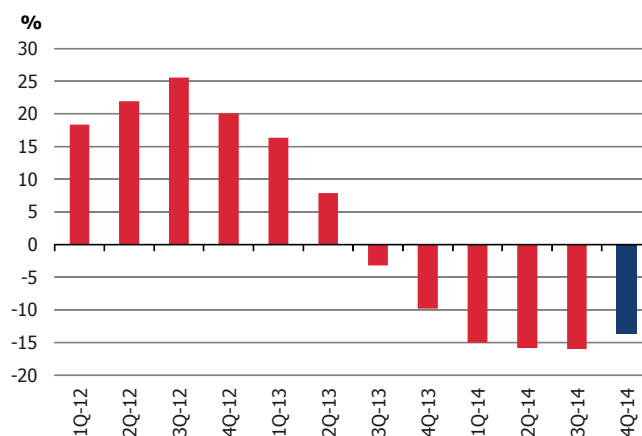
Compared to the previous quarter, the unemployment rate of men increased by 0.8 p.p., while that of women decreased by 0.2 p.p..

**Figure 5: Unemployment rate by sex**



From the same quarter of 2013, the unemployed population decreased by 13.6% (109.7 thousand people).

**Figure 6: Unemployed population year-on-year rate of change**



The unemployed population year-on-year decrease came mostly from the following groups: women (58.4 thousand; 14.3%); people aged 25 to 34 (49.4 thousand; 23.6%); having completed an education level corresponding to the first or second stages of basic education (66.1 thousand; 14.7%); seeking a new job (107.3 thousand; 14.8%), who were formerly in the

services sector (59.8 thousand; 13.6%); and seeking a job for 12 months or longer (63.4 thousand; 12.3%).

The unemployment rate decreased from the same quarter of 2013 (1.8 p.p.), as for the unemployment rate of men (1.7 p.p.) and of women (2.1 p.p.).

In the 4<sup>th</sup> quarter of 2014, the unemployed population had the following composition:

- By sex: 50.1% of men and 49.9% of women.
- By age group: 18.0% of young people (15 to 24 years old), 22.9% of people aged 25 to 34, 23.4% aged 35 to 44 and 35.7% aged 45 years old and over.
- By level of education: 54.9% of unemployed having completed the first or second stages of basic education, 28.1% the (upper) secondary and post-secondary non-tertiary education and 17.0% the tertiary education.
- By activity sector: 11.9% of unemployed looking for a first job and 88.1% looking for a new job (of which, 2.3% coming from the agriculture, forestry and fishing sector, 31.4% from the manufacturing, electricity, gas and water supply and construction sector and 61.5% from the services sector).
- By duration of search: 35.5% of unemployed seeking a job for less than 12 months and 64.5% looking for a job for 12 months or longer (long-term unemployment).

In 2014, there were 726.0 thousand unemployed people. The unemployed population decreased by 15.1% from the previous year (129.2 thousand people).

The unemployment rate was 13.9%, down 2.3 p.p. from the previous year.

#### 4. Inactive population

The inactive population increased by 1.0% from the previous quarter (50.6 thousand people) and by 0.5% from the same quarter of 2013 (26.4 thousand).

The inactive population aged 15 and over increased by 1.6% from the previous quarter (57.3 thousand) and by 1.7% from the same quarter of 2013 (63.2 thousand).

The inactivity rate (15 years old and over) stood at 41.5%, having increased by 0.7 p.p. from the previous quarter and by 0.8 p.p. from the same quarter of 2013.

The inactivity rate of women (46.5%) exceeded that of men (35.8%) by 10.7 p.p..

Compared to the previous quarter, the inactivity rate increased both for men (0.6 p.p.) as for women (0.7 p.p.).

From the same quarter of 2013, the inactivity rate increased for men (0.7 p.p.) and for women (0.8 p.p.).

The number of persons seeking work but not immediately available, estimated at 24.6 thousand, corresponded to 0.7% of the inactive population aged 15 and over.

The number of persons seeking work but not immediately available decreased by 16.9% from the previous quarter (5.0 thousand) and increased by 5.6% from the same quarter of 2013 (1.3 thousand).

The number of persons available to work but not seeking, estimated at 257.7 thousand, corresponded to 7.0% of the inactive population aged 15 and over.

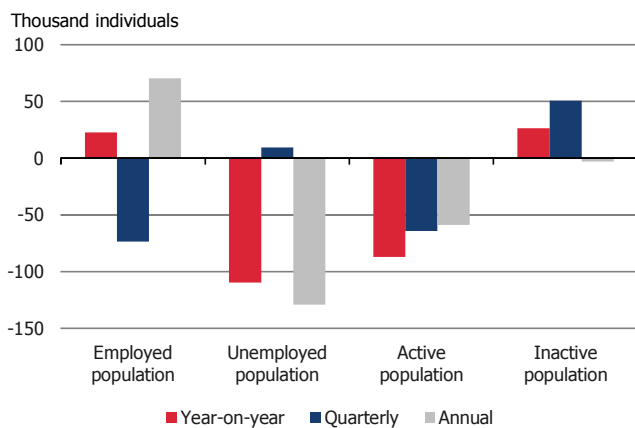
The number of persons available to work but not seeking decreased by 14.8% from the previous quarter (44.6 thousand) and decreased by 6.0% from the same quarter of 2013 (16.5 thousand).

In 2014, the total inactive population decreased by 0.1% from the previous year (3.0 thousand people). The inactive population aged 15 and over increased by 0.8% (30.6 thousand).

The inactivity rate was 41.2%, up 0.5 p.p. from the previous year.

Figure 5 exhibits a summary of the observed changes in this quarter (year-on-year, quarterly and annual) by labour market status, as described above in this press release.

**Figure 7: Change in the employed, unemployed, active and inactive population**



### 5. Quarterly flows between labour market states

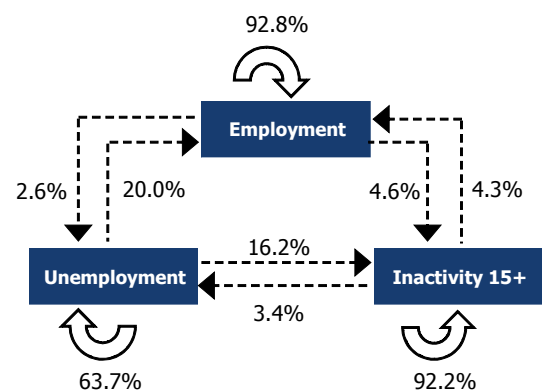
From the 3<sup>rd</sup> to the 4<sup>th</sup> quarter of 2014, 2.6% of the people initially employed moved into unemployment and 4.6% moved into inactivity, with the proportion of employed moving out of this situation totalling around

7.2% in the 4<sup>th</sup> quarter of 2014 (92.8% remained employed).

The flows out of unemployment between the two quarters were, in relative terms, larger than the flows out of employment.

From the total unemployed in the 3<sup>rd</sup> quarter of 2014, 36.3% moved out of this labour market state in the 4<sup>th</sup> quarter of 2014. Out of these, 20.0% became employed and 16.2% moved into inactivity.

**Quarterly flows between labour force states (as a % of initial state)**



From the total of people aged 15 and over considered to be inactive in the 3<sup>rd</sup> quarter of 2014, 4.3% moved into employment and 3.4% moved into unemployment, in the 4<sup>th</sup> quarter of 2014.

### 6. Unemployment rates by NUTS II region

In the 4<sup>th</sup> quarter of 2014, the unemployment rate was higher than the national average in six NUTS II regions of the country: *Região Autónoma dos Açores* (15.5%), *Região Autónoma da Madeira* (15.1%), *Algarve*

(14.9%), *Alentejo* (14,5%), *Norte* (14.2%) and *Lisboa* (14.0%).

Below the national average, there was only the unemployment rate of *Centro* (10.7%).

**Table 1: Unemployment rates by NUTS II region (NUTS-2002)**

	4Q-2013	3Q-2014	4Q-2014	2013	2014
<b>Portugal</b>	<b>15.3</b>	<b>13.1</b>	<b>13.5</b>	<b>16.2</b>	<b>13.9</b>
Norte	16.4	14.3	14.2	17.1	14.8
Centro	10.5	10.5	10.7	11.4	10.6
Lisboa	17.2	14.0	14.0	18.5	14.9
Alentejo	15.6	12.6	14.5	16.9	14.3
Algarve	17.0	11.2	14.9	16.9	14.5
R. A. Açores	17.3	15.7	15.5	17.0	16.3
R. A. Madeira	17.0	13.0	15.1	18.1	15.0

Unit: %

**Source:** INE, Labour Force Survey - 4<sup>th</sup> quarter of 2014.

**Note:** Values calibrated by using the population estimates calculated from the final results of Census 2011.

Compared to the previous quarter, and similarly to the overall picture in Portugal, the unemployment rate increased in four regions.

These increases were recorded in *Algarve* (3.7 p.p.), *Região Autónoma da Madeira* (2.1 p.p.), *Alentejo* (1.9 p.p.) and *Centro* (0.2 p.p.).

Compared to the same quarter of 2013, and also similarly to the overall picture in Portugal, the unemployment rate decreased in all regions, except in *Centro* (0.2 p.p.).

The largest decreases were recorded in *Lisboa* (3.2 p.p.), *Norte* (2.2 p.p.) and *Algarve* (2.1 p.p.).

In 2014, the highest unemployment rates were recorded in six regions: *Região Autónoma dos Açores* (16.3%), *Região Autónoma da Madeira* (15.0%), *Lisboa* (14.9%), *Norte* (14.8%), *Algarve* (14.5%), and *Alentejo* (14.3%).

There was only one region recording an unemployment rate below the national average: *Centro* (10.6%).

Compared to 2013, and similarly to the overall picture in Portugal, the unemployment rate decreased in all regions.

The largest decreases were recorded in *Lisboa* (3.6 p.p.), *Região Autónoma da Madeira* (3.1 p.p.) and *Alentejo* (2.6 p.p.).

**Table 2: Main indicators - active and employed population - Portugal**

	Quarterly level			Annual level		Rate of change		
	4Q-2013	3Q-2014	4Q-2014	2013	2014	On year	On quarter	Annual
	Thousands					%		
<b>Labour force (active population)</b>	<b>5,276.8</b>	<b>5,254.0</b>	<b>5,189.8</b>	<b>5,284.6</b>	<b>5,225.6</b>	<b>-1.6</b>	<b>-1.2</b>	<b>-1.1</b>
Males	2,710.1	2,691.8	2,660.4	2,724.6	2,681.0	-1.8	-1.2	-1.6
Females	2,566.7	2,562.1	2,529.5	2,560.0	2,544.6	-1.4	-1.3	-0.6
15 to 24	383.2	401.1	369.5	389.5	378.0	-3.6	-7.9	-3.0
25 to 34	1,150.3	1,111.2	1,100.8	1,162.5	1,118.7	-4.3	-0.9	-3.8
35 to 44	1,459.2	1,448.2	1,450.9	1,448.4	1,454.2	-0.6	0.2	0.4
45 to 64	2,017.3	2,025.7	2,034.2	2,009.4	2,025.3	0.8	0.4	0.8
65 and over	266.8	267.8	234.5	274.8	249.4	-12.1	-12.4	-9.2
First and second stages of basic education	2,847.2	2,760.3	2,655.9	2,980.3	2,754.4	-6.7	-3.8	-7.6
(Upper) secondary and post-secondary non-tertiary education	1,279.9	1,284.1	1,290.8	1,222.7	1,275.5	0.9	0.5	4.3
Tertiary education	1,149.7	1,209.5	1,243.1	1,081.6	1,195.6	8.1	2.8	10.5
<b>Participation rate (%)</b>	<b>50.6</b>	<b>50.6</b>	<b>50.1</b>	<b>50.6</b>	<b>50.3</b>			
Males	54.7	54.7	54.2	54.8	54.4			
Females	46.9	46.9	46.4	46.7	46.6			
<b>Participation rate (15 and over) (%)</b>	<b>59.3</b>	<b>59.2</b>	<b>58.5</b>	<b>59.3</b>	<b>58.8</b>			
Males	64.9	64.8	64.2	65.1	64.5			
Females	54.3	54.2	53.5	54.1	53.8			
<b>Employed population</b>	<b>4,468.9</b>	<b>4,565.1</b>	<b>4,491.6</b>	<b>4,429.4</b>	<b>4,499.5</b>	<b>0.5</b>	<b>-1.6</b>	<b>1.6</b>
Males	2,309.3	2,361.7	2,310.8	2,288.4	2,319.5	0.1	-2.2	1.4
Females	2,159.6	2,203.4	2,180.7	2,141.0	2,180.0	1.0	-1.0	1.8
15 to 24	244.9	271.9	243.9	241.1	246.5	-0.4	-10.3	2.2
25 to 34	940.8	952.2	940.7	941.7	945.1	o	-1.2	0.4
35 to 44	1,257.0	1,287.1	1,287.7	1,240.3	1,284.1	2.4	o	3.5
45 to 64	1,762.7	1,790.5	1,789.4	1,734.9	1,778.8	1.5	-0.1	2.5
65 and over	263.5	263.5	229.9	271.4	245.0	-12.8	-12.8	-9.7
First and second stages of basic education	2,397.5	2,369.8	2,272.3	2,474.2	2,342.5	-5.2	-4.1	-5.3
(Upper) secondary and post-secondary non-tertiary education	1,064.0	1,100.9	1,094.8	1,010.0	1,080.8	2.9	-0.6	7.0
Tertiary education	1,007.4	1,094.4	1,124.4	945.1	1,076.3	11.6	2.7	13.9
Agriculture, forestry and fishing (a)	422.4	407.3	348.5	453.1	389.1	-17.5	-14.4	-14.1
Mining and quarrying; manufacturing; electricity, gas, steam and air conditioning supply; water supply; sewage, waste management and remediation activities; construction (a)	1,041.0	1,089.7	1,074.9	1,049.7	1,073.5	3.3	-1.4	2.3
Services (a)	3,005.5	3,068.2	3,068.2	2,926.6	3,036.9	2.1	-	3.8
Employees	3,514.1	3,676.5	3,659.4	3,457.5	3,611.0	4.1	-0.5	4.4
With a permanent job (work contract of unlimited duration)	2,768.3	2,864.6	2,869.9	2,717.5	2,836.5	3.7	0.2	4.4
With a temporary job (work contract of limited duration)	614.7	683.6	654.7	609.4	644.4	6.5	-4.2	5.7
Other contractual arrangements	131.1	128.2	134.8	130.6	130.1	2.8	5.1	-0.4
Self-employed workers	928.4	859.3	811.8	942.3	864.5	-12.6	-5.5	-8.3
Unpaid family workers	26.4	29.3	20.4	29.6	24.0	-22.7	-30.4	-18.9
Full-time workers	3,843.7	3,969.6	3,910.5	3,795.2	3,910.8	1.7	-1.5	3.0
Part-time workers	625.1	595.5	581.0	634.2	588.7	-7.1	-2.4	-7.2
Underemployed part-time workers	259.1	232.1	251.7	258.6	245.2	-2.9	8.4	-5.2
<b>Employment rate (15 and over) (%)</b>	<b>50.2</b>	<b>51.4</b>	<b>50.6</b>	<b>49.7</b>	<b>50.7</b>			
Males	55.3	56.9	55.7	54.7	55.8			
Females	45.7	46.6	46.1	45.3	46.1			

Source: INE, Labour Force Survey - 4<sup>th</sup> quarter of 2014.

**Notes:**

Values calibrated by using the population estimates calculated from the final results of Census 2011.

(a) The estimates are presented by NACE-Rev. 2.

- Null



**Table 3: Main indicators - unemployed and inactive population - Portugal**

	Quarterly level			Annual level		Rate of change		
	4Q-2013	3Q-2014	4Q-2014	2013	2014	On year	On quarter	Annual
	Thousands					%		
<b>Unemployed population</b>	<b>808.0</b>	<b>688.9</b>	<b>698.3</b>	<b>855.2</b>	<b>726.0</b>	<b>-13.6</b>	<b>1.4</b>	<b>-15.1</b>
Males	400.9	330.1	349.5	436.2	361.5	-12.8	5.9	-17.1
Females	407.1	358.8	348.7	419.0	364.5	-14.3	-2.8	-13.0
15 to 24	138.3	129.2	125.6	148.4	131.4	-9.2	-2.8	-11.5
25 to 34	209.5	159.1	160.1	220.7	173.7	-23.6	0.6	-21.3
35 to 44	202.2	161.1	163.2	208.2	170.0	-19.3	1.3	-18.3
45 and over	258.0	239.5	249.3	278.0	250.9	-3.4	4.1	-9.7
First and second stages of basic education	449.7	390.6	383.6	506.1	412.0	-14.7	-1.8	-18.6
(Upper) secondary and post-secondary non-tertiary education	215.9	183.2	196.0	212.7	194.7	-9.2	7.0	-8.5
Tertiary education	142.3	115.1	118.7	136.5	119.4	-16.6	3.1	-12.5
Looking for a first job	85.2	93.3	82.8	91.2	88.0	-2.8	-11.3	-3.5
Looking for a new job	722.8	595.6	615.5	764.1	638.1	-14.8	3.3	-16.5
Agriculture, forestry and fishing (a) (b)	18.8	12.9	14.0	20.0	14.8	-25.5	8.5	-26.0
Mining and quarrying; manufacturing; electricity, gas, steam and air conditioning supply; water supply; sewage, waste management and remediation activities; construction (a) (b)	239.4	188.5	193.2	270.3	202.7	-19.3	2.5	-25.0
Services (a) (b)	438.6	367.7	378.8	445.5	389.9	-13.6	3.0	-12.5
Unemployed by duration of search								
Less than 12 months	294.5	227.9	248.2	324.4	250.2	-15.7	8.9	-22.9
12 months or longer (long-term unemployment)	513.5	460.9	450.1	530.8	475.8	-12.3	-2.3	-10.4
<b>Unemployment rate (%)</b>	<b>15.3</b>	<b>13.1</b>	<b>13.5</b>	<b>16.2</b>	<b>13.9</b>			
Males	14.8	12.3	13.1	16.0	13.5			
Females	15.9	14.0	13.8	16.4	14.3			
Youth (15 to 24)	36.1	32.2	34.0	38.1	34.8			
Long-term	9.7	8.8	8.7	10.0	9.1			
<b>Inactive population</b>	<b>5,151.6</b>	<b>5,127.4</b>	<b>5,178.0</b>	<b>5,164.7</b>	<b>5,161.7</b>	<b>0.5</b>	<b>1.0</b>	<b>-0.1</b>
Inactive population (15 and over)	3,621.9	3,627.8	3,685.1	3,627.3	3,657.9	1.7	1.6	0.8
Males	1,464.2	1,461.8	1,486.5	1,459.4	1,474.5	1.5	1.7	1.0
Females	2,157.7	2,166.0	2,198.7	2,167.9	2,183.3	1.9	1.5	0.7
15 to 24	722.2	699.9	728.6	723.2	723.9	0.9	4.1	0.1
25 to 34	121.1	128.6	126.4	130.2	126.8	4.4	-1.7	-2.6
35 to 44	141.7	140.9	133.5	157.4	137.0	-5.8	-5.3	-13.0
45 to 64	833.0	831.6	825.7	838.4	830.6	-0.9	-0.7	-0.9
65 and over	1,803.8	1,826.8	1,870.9	1,778.2	1,839.6	3.7	2.4	3.5
Students	796.8	748.8	803.6	795.8	794.2	0.9	7.3	-0.2
Fulfilled domestic tasks	435.3	431.2	417.4	437.6	428.6	-4.1	-3.2	-2.1
Retired	1,660.6	1,705.6	1,722.8	1,640.8	1,693.1	3.7	1.0	3.2
Other inactive	729.2	742.2	741.3	753.1	742.0	1.7	-0.1	-1.5
Persons seeking work but not immediately available	23.3	29.6	24.6	27.7	27.1	5.6	-16.9	-2.2
Persons available to work but not seeking	274.2	302.3	257.7	277.4	273.3	-6.0	-14.8	-1.5
<b>Inactivity rate (15 and over) (%)</b>	<b>40.7</b>	<b>40.8</b>	<b>41.5</b>	<b>40.7</b>	<b>41.2</b>			
Males	35.1	35.2	35.8	34.9	35.5			
Females	45.7	45.8	46.5	45.9	46.2			

Source: INE, Labour Force Survey - 4<sup>th</sup> quarter of 2014.

**Notes:**

Values calibrated by using the population estimates calculated from the final results of Census 2011.

(a) The previous employment experience of the unemployed looking for a new job is characterized only for those who had stopped working within the last 8 years. Therefore, the sum of the number of unemployed looking for a new job by economic activity of the last job does not correspond to the total unemployed looking for a new job.

(b) The estimates are presented by NACE-Rev. 2.

## TECHNICAL NOTE

The main purpose of the Labour Force Survey is to characterise the population in terms of the labour market. It is a quarterly sample survey, addressed to families occupying the same dwelling in the national territory, which makes available quarterly and annual data.

Most of the characteristics observed in this survey report to the situation in one pre-defined week (from Monday to Sunday), known as reference week. The reference weeks are uniformly distributed throughout the quarters and years. The interviews usually take place in the week following the reference week.

The information is obtained directly, through computer-assisted interview, by using a mixed data collection mode: the initial interview is done face-to-face by an interviewer visiting the household and the other five interviews are done by telephone, if certain requirements are met. Published data were calibrated by using the population estimates calculated from the final results of Census 2011.

### Some concepts

**Participation rate:** ratio between the labour force (active population) and the total population.

$$\text{P.R. (\%)} = (\text{Labour force} / \text{Total population}) \times 100$$

**Participation rate (15 and over):** ratio between the labour force and the working age total population (15 and over).

$$\text{P.R. (\%)} = (\text{Labour force} / \text{Total population 15 and over}) \times 100$$

**Unemployment rate:** ratio between the unemployed population and the labour force.

$$\text{U.R. (\%)} = (\text{Unemployed population} / \text{Labour force}) \times 100$$

**Long term unemployment rate:** ratio between the unemployed population seeking employment for 12 months and over and the labour force.

$$\text{U.R. (\%)} = (\text{Unemployed population seeking employment for 12 months and over} / \text{Labour force}) \times 100$$

**Employment rate (15 and over):** ratio between the employed population and the working age total population (15 and over).

$$\text{E.R. (\%)} = (\text{Employed population} / \text{Total population 15 and over}) \times 100$$

**Inactivity rate (15 and over):** ratio between the working age inactive population (15 and over) and the working age total population (15 and over).

$$\text{I.R. (\%)} = (\text{Inactive population 15 and over} / \text{Total population 15 and over}) \times 100$$

### On year rate of change

The on year (year-on-year) change compares the level of the variable in the current quarter with that of the corresponding quarter of the previous year. This rate of change, considering a seasonal stable pattern is not affected by this type of fluctuation, but may, however, be influenced by specific effects in a given quarter.

### On quarter rate of change

The on quarter (quarterly) change compares the level of the variable over two consecutive periods. Although this indicator permits to monitor the recent pace of the variable, its calculation is particularly influenced by seasonal effects and other more specific effects in one (or both) quarters under comparison.

### Annual rate of change

The annual change compares the average level of the variable for the four quarters of the last year over the average level of the variable for the four quarters of the previous year. Being an average, this indicator is less sensible to sporadic effects in the variable.

The publication Employment Statistics – 4<sup>th</sup> quarter of 2014 (“Estatísticas do Emprego – 4<sup>o</sup> trimestre de 2014”) associated with this Press Release is available, free of charge, at [http://www.ine.pt/xportal/xmain?xpid=INE&xpgid=ine\\_publicacoes&xlang=en](http://www.ine.pt/xportal/xmain?xpid=INE&xpgid=ine_publicacoes&xlang=en).

**Next Press Release:** 6 May 2015.

## **THE INTEGRATION OF THE 2011 CENSUS RESULTS IN THE LABOUR FORCE SURVEY SAMPLE**

The Labour Force Survey sample has panel characteristics and includes a quarterly rotation schema, which aims, among other reasons, at preventing an excessive burden over respondents (with impact on their answers' quality) that results from the administration of a questionnaire recognised as long. The total sample is divided into six subsamples (rotations) and, in each quarter, each subsample is replaced by another after having been observed six times (during one and a half year).

After the dissemination of the 2011 Census definitive results, from the 3<sup>rd</sup> quarter of 2013 onwards, each new Labour Force Survey rotation came from a new sampling frame, built upon those Census results. This process takes place during six consecutive quarters and will be concluded in the 4<sup>th</sup> quarter of 2014. This information was transmitted in due course to the users on chapter 3, "Methodological notes", of the "Employment Statistics" publication (available only in Portuguese) and is reported on the Methodological Document of the Labour Force Survey statistical operation.

This process of sample updating is necessary and occurs whenever there are new Census data, as it has happened after the release of the definitive results of 2001 Census. The adjustment made envisages assuring a better sampling frame coverage and a reduction of non response rates, both with positive impact on the quality of the estimated results.

Out of this process, it may occur a change in the statistical representation of the population characteristics, with impact, mainly, in the employment components dynamics. In the 1<sup>st</sup> quarter of 2015, the quarterly changes will be based on samples exclusively built upon 2011 Census, as well as the year-on-year changes in the 4<sup>th</sup> quarter of 2015.