

MONTHLY ECONOMIC SURVEY
March 2013

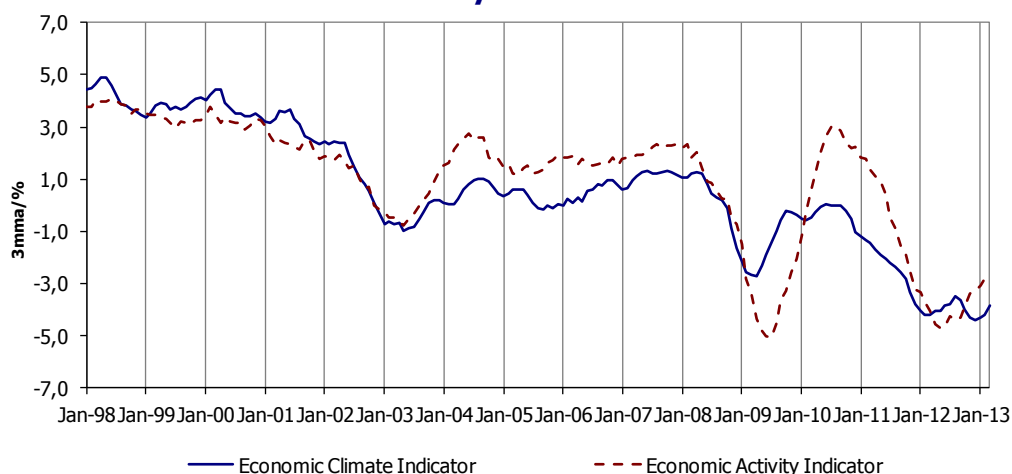
Private consumption and investment diminish more intensely in February. Economic climate indicator increase in March.

In March, the economic sentiment and the consumer confidence indicators for the Euro Area (EA) recovered again. In the same month, the raw materials and oil prices presented monthly change rates of -2.0% and -3.6% (0.1% and 2.2% in February), respectively.

In Portugal, the economic climate indicator reinforced in March the upward movement observed in the two previous months, after attaining the minimum of the series in December, while the economic activity indicator, available until February, registered a less intense decrease in the last six months. The private consumption indicator presented a slightly more pronounced year-on-year reduction in February, reflecting the stronger negative contribution of the non-durable consumption component. The Gross Fixed Capital Formation (GFCF) indicator recorded a stronger decrease in February, attaining the minimum of the series, which reflected the more intense negative evolution of the construction component. Concerning the international trade of goods, in nominal terms, exports and imports registered year-on-year change rates of 0.8% and -6.1% in February (1.8% and -5.5% in the previous month), respectively. It should be mentioned that, without using three months moving averages, nominal exports of goods recorded a year on year decrease of 2.6% in February.

The 12-month average rate of the Consumer Price Index (CPI) was 2.0% in March (2.2% in February). The 12-month average rate of the Harmonized Index of Consumer Prices (HICP) decreased to 2.0% (2.3% in the previous month). In March, the differential between the Portuguese HICP and the EA HICP was -0.3 p.p. (-0.1 p.p. in February).

Economic Synthesis Indicators



Based on information available up to April 16, 2013.



	Unit	First Period	Minimum		Maximum		Year			Quarter					Month														
			Value	Date	Value	Date	2010	2011	2012	2012				I	2012												2013		
										I	II	III	IV		Mar	Apr	May	Jun	Jul	Aug	Sep	Oct	Nov	Dec	Jan	Feb	Mar		
National Accounts (a)																													
GDP	s.a/y.r./%	1996.I	-4.1	2009.I	5.6	1998.IV	1.9	-1.6	-3.2	-2.3	-3.1	-3.5	-3.8	-															
Private Consumption	s.a/y.r./%	1996.I	-6.5	2011.IV	6.5	1999.I	2.5	-3.8	-5.6	-5.5	-5.7	-6.0	-5.3	-															
Public Consumption	s.a/y.r./%	1996.I	-6.9	2011.IV	7.1	1998.II	0.1	-4.3	-4.4	-2.9	-5.3	-4.7	-4.7	-															
Gross Capital Formation	s.a/y.r./%	1996.I	-24.1	2011.IV	17.1	1998.I	1.4	-13.8	-13.7	-15.1	-20.8	-14.4	-2.6	-															
Exports of Goods and Services	s.a/y.r./%	1996.I	-18.6	2009.I	13.6	2006.IV	10.2	7.2	3.3	8.2	3.7	1.9	-0.5	-															
Imports of Goods and Services	s.a/y.r./%	1996.I	-15.3	2009.I	16.5	1998.I	8.0	-5.9	-6.9	-5.5	-10.8	-8.1	-3.1	-															
Contribution of internal demand for GDP change rate	p.p.	1996.I	-10.7	2011.IV	8.9	1998.IV	2.0	-6.3	-7.0	-7.2	-8.7	-7.4	-4.8	-															
Contribution of external demand for GDP change r.	p.p.	1996.I	-3.1	1998.IV	7.7	2011.IV	-0.1	4.7	3.9	4.9	5.6	3.9	1.0	-															
Economic Activity																													
Economic activity indicator	3-mma/%	Jan-91	-5.1	Jul-09	4.1	Jun-98	2.1	-0.8	-4.1	-4.1	-4.6	-4.3	-3.3	-	-4.1	-4.6	-4.7	-4.6	-4.3	-4.4	-4.3	-3.9	-3.4	-3.3	-3.1	-2.8	-		
Manufacturing industry production index	s.a./y.r./3-mma	Mar-96	-13.0	Feb-09	7.3	May-01	1.5	-1.9	-5.0	-5.7	-6.3	-4.0	-4.0	-	-5.7	-6.4	-6.4	-6.3	-3.9	-2.3	-4.0	-5.0	-5.7	-4.0	-3.4	-2.2	-		
Construction production index	s.a./y.r./3-mma	Mar-01	-19.9	Feb-13	7.9	Dec-01	-8.4	-10.7	-17.0	-12.8	-19.4	-18.3	-17.9	-	-12.8	-16.1	-18.2	-19.4	-18.8	-17.1	-18.3	-18.0	-19.5	-17.9	-19.6	-19.9	-		
Total turnover index (b)	y.r./3-mma	Apr-01	-16.2	Jun-09	8.0	May-01	4.4	-3.5	-6.8	-5.1	-7.6	-7.7	-6.6	-	-5.1	-7.5	-7.9	-7.6	-6.5	-6.5	-7.7	-6.4	-6.7	-6.6	-7.3	-8.0	-		
Services turnover index	y.r./3-mma	Mar-01	-13.6	Jun-09	9.0	Aug-01	2.1	-6.9	-8.6	-7.8	-9.6	-8.9	-8.0	-	-7.8	-9.9	-10.2	-9.6	-8.3	-8.2	-8.9	-7.8	-7.7	-8.0	-8.5	-9.3	-		
Economic climate indicator	3-mma	Jan-89	-4.4	Dec-12	5.1	Mar-89	-0.4	-2.5	-4.0	-4.2	-3.9	-3.7	-4.4	-3.9	-4.2	-4.1	-4.0	-3.9	-3.8	-3.5	-3.7	-4.0	-4.3	-4.4	-4.3	-4.2	-3.9		
Private Consumption																													
Qualitative consumption indicator	3-mma/%	May-89	-2.4	Dec-12	1.5	Apr-99	-0.6	-1.7	-2.2	-2.2	-2.1	-2.1	-2.4	-2.2	-2.2	-2.2	-2.1	-2.1	-2.1	-2.1	-2.3	-2.3	-2.4	-2.4	-2.3	-2.2			
Quantitative consumption indicator	y.r./3-mma/%	Mar-92	-6.3	Dec-11	8.3	Mar-92	3.0	-3.8	-3.4	-3.4	-4.1	-3.4	-2.5	-	-3.4	-4.3	-4.0	-4.1	-3.0	-3.2	-3.4	-2.4	-2.2	-2.5	-2.7	-2.9	-		
- Non-durable goods and services	y.r./3-mma/%	Mar-92	-3.8	Nov-11	7.0	Mar-92	1.9	-2.0	-1.4	-0.9	-2.2	-1.7	-1.0	-	-0.9	-1.9	-1.9	-2.2	-1.2	-1.3	-1.7	-1.0	-0.9	-1.0	-1.4	-1.9	-		
- Durable goods	y.r./3-mma/%	Mar-92	-30.7	Jan-12	22.7	Apr-92	13.9	-19.0	-22.8	-27.1	-22.9	-21.4	-19.7	-	-27.1	-28.0	-24.9	-22.9	-21.3	-22.0	-21.4	-18.8	-17.8	-19.7	-18.1	-15.5	-		
Consumer confidence indicator	balance/3-mma	Sep-97	-59.8	Dec-12	-5.5	Nov-97	-40.8	-51.7	-54.3	-54.5	-51.5	-51.4	-59.8	-55.3	-54.5	-53.3	-52.6	-51.5	-50.4	-49.2	-51.4	-55.3	-59.0	-59.8	-58.7	-56.3	-55.3		
Investment																													
GFCF indicator	y.r./3-mma/%	Mar-95	-19.0	Feb-13	16.0	Feb-97	-2.2	-10.0	-16.2	-13.6	-17.5	-17.2	-16.6	-	-13.6	-16.3	-17.1	-17.5	-16.8	-16.5	-17.2	-16.7	-16.3	-16.6	-18.2	-19.0	-		
- Construction	y.r./3-mma/%	Mar-95	-24.2	Feb-13	18.0	Feb-97	-4.5	-10.3	-18.5	-13.1	-20.5	-20.8	-19.7	-	-13.1	-17.3	-19.4	-20.5	-19.9	-19.5	-20.8	-20.3	-20.0	-19.7	-22.5	-24.2	-		
- Machinery and equipment	y.r./3-mma/%	Jan-89	-11.8	Jan-12	21.0	Jun-90	-2.2	-7.8	-7.7	-9.5	-7.3	-6.5	-7.6	-4.5	-9.5	-8.9	-7.5	-7.3	-7.0	-6.6	-6.5	-6.8	-6.8	-7.6	-6.5	-6.4	-4.5		
- Transport material	y.r./3-mma/%	Mar-95	-35.0	Apr-09	34.6	May-10	16.9	-14.7	-25.5	-31.4	-27.1	-22.8	-20.8	-	-31.4	-34.6	-30.2	-27.1	-23.9	-25.2	-22.8	-19.6	-16.3	-20.8	-20.8	-14.4	-		

(a) - Quarterly National Accounts - Benchmark year 2006 - Chain linked volume data (reference year = 2006); Annual National Accounts: 2010 - definitive data / 2011 and 2012 - preliminary data. Information available in 11/03/2013.

(b) - Includes industry, services and retail trade.

	Unit	First Period	Minimum		Maximum		Year			Quarter					Month														
			Value	Date	Value	Date	2010	2011	2012	2012				I	2012												2013		
										I	II	III	IV		Mar	Apr	May	Jun	Jul	Aug	Sep	Oct	Nov	Dec	Jan	Feb	Mar		
External Demand																													
Nominal exports of goods - International trade	y.r./3-mma/%	Mar-96	-26.7	Mar-09	23.2	May-10	17.6	15.0	5.9	11.5	6.5	4.4	1.4	-	11.5	8.1	6.4	6.5	8.1	10.0	4.4	3.7	-0.1	1.4	1.8	0.8	-		
Nominal imports of goods - International trade	y.r./3-mma/%	Mar-96	-26.8	Apr-09	24.0	Feb-00	14.1	1.0	-5.1	-3.9	-9.6	-5.0	-1.6	-	-3.9	-9.0	-10.8	-9.6	-7.2	-3.3	-5.0	-1.1	-3.3	-1.6	-5.5	-6.1	-		
Coverage rate	3-mma/%	Mar-95	56.6	Dec-99	85.1	Jul-12	63.5	72.4	80.8	79.7	82.9	80.1	80.4	-	79.7	81.0	80.7	82.9	85.1	83.9	80.1	77.5	80.2	80.4	83.0	82.9	-		
External demand indicator	s.a./y.r./3-mma/%	Mar-91	-26.3	Jul-09	26.5	Jul-10	18.9	11.4	5.7	3.0	3.0	2.6	14.3	-	3.0	3.3	1.8	3.0	3.4	4.7	2.6	6.8	10.5	14.3	13.3	-	-		
Labour Market																													
Employment indicator - Short-term statistics	y.r./3-mma	Mar-01	-7.8	Aug-12	2.1	May-01	-2.1	-2.9	-7.3	-6.7	-7.7	-7.7	-7.3	-	-6.7	-7.2	-7.5	-7.7	-7.7	-7.8	-7.7	-7.5	-7.4	-7.3	-7.1	-7.0	-		
Reg. unemp. along the month - State emp. agencies	s.a./y.r./3-mma	Mar-90	-19.1	May-90	47.0	Jun-93	-6.7	5.4	8.2	20.5	15.0	5.5	-4.2	-	20.5	19.1	16.7	15.0	13.3	14.0	5.5	4.6	0.9	-4.2	-5.9	-8.7	-		
Vacancies along the month - State employment ag.	s.a./y.r./3-mma	Mar-90	-24.3	Apr-12	40.8	Nov-97	5.0	-19.1	-9.1	-24.0	-16.7	-4.8	13.0	-	-24.0	-23.3	-18.1	-16.7	-13.9	-6.7	-4.8	6.7	14.4	13.0	14.1	17.0	-		
Employment expectations of entrepreneurs	balance/3-mma	Jan-03	-26.3	Nov-12	-5.3	Apr-08	-10.4	-18.3	-24.4	-23.9	-24.2	-23.4	-26.2	-23.5	-23.9	-23.8	-24.7	-24.2	-23.6	-22.7	-23.4	-24.9	-26.3	-26.2	-25.6	-24.4	-23.5		
Unemployment expectations of consumers	balance/3-mma	Sep-97	8.7	Aug-00	79.8	Mar-09	56.4	65.4	71.6	74.5	69.9	68.0	74.1	70.7	74.5	72.8	71.5	69.9	69.0	67.2	68.0	71.0	72.9	74.1	72.9	72.0	70.7		
Average monthly wage declared by worker	s.a./y.r./3-mma	Mar-02	-1.4	Dec-12	4.8	Dec-02	3.0	3.6	-0.4	0.5	-1.0	0.4	-1.4	-	0.5	0.6	0.7	-1.0	-1.1	-1.3	0.4	0.6	-1.3	-1.4	-0.9	2.3	-		
Prices																													
Consumer price index - Total	y.r./%	Jan-78	-1.7	Sep-09	32.2	Jul-84	1.4	3.7	2.8	3.4	2.8	2.9	2.0	0.2	3.1	3.0	2.7	2.7	2.8	3.1	2.9	2.1	1.9	1.9	0.2	0.0	0.5		
- Goods	y.r./%	Jan-78	-3.7	Jul-09	34.1	Dec-83	1.7	4.4	2.5	3.6	2.6	2.7	1.3	-0.3	3.2	3.0	2.4	2.4	2.5	3.0	2.6	1.6	1.2	1.2	-0.4	-0.6	0.0		
- Services	y.r./%	Jan-78	0.6	Apr-10	26.0	Feb-84	1.0	2.5	3.1	3.1	3.2	3.3	3.0	1.0	3.1	3.1	3.2	3.2	3.2	3.4	3.0	3.0	3.0	1.0	0.7	1.2			
Core inflation indicator	y.r./%	Jan-78	-0.6	Jan-10	31.3	May-84	0.3	2.3	1.5	2.1	1.6	1.2	1.2	-0.2	1.9	1.7	1.6	1.5	1.3	1.4	1.1	1.1	1.2	1.3	-0.3	-0.5	0.3		
Harmonised index of consumer prices	y.r./%	Jan-96	-1.8	Sep-09	5.1	Mar-01	1.4	3.6	2.8	3.3	2.8	3.0	2.0	0.4	3.1	2.9	2.7	2.7	2.8	3.2	2.9	2.1	1.9	2.1	0.4	0.2	0.7		
Manufacturing industry production price index	y.r./3-mma/%	Mar-01	-8.1	Aug-09	8.0	Aug-08	3.5	5.7	2.1	2.8	1.5	2.0	2.1	0.7	2.8	2.4	2.0	1.5	1.2	1.4	2.0	2.7	2.5	2.1	1.4	1.0	0.7		
Consumers expectations of prices evolution	balance/3-mma	Sep-97	-3.7	Jul-09	62.5	Jan-11	33.3	57.6	37.7	46.0	34.5	33.7	36.5	32.7	46.0	40.0	38.5	34.5	30.9	29.3	33.7	36.6	37.8	36.5	36.5	36.1	32.7		
Expectations of prices in manufacturing industry	bal./s.a./3-mma	Jan-87	-23.9	Jan-09	26.5	Nov-90	3.2	5.6	-1.0	3.8	-3.9	-1.3	-2.6	-5.4	3.8	-2.4	-2.7	-3.9	-2.5	-2.4	-1.3	-2.1	-2.7	-2.6	-2.1	-2.7	-5.4		
Effective exchange rate ind. for Portugal (nominal)	y.r.	Mar-01	-2.4	Jun-10	3.6	May-03	-1.5	0.0	-1.3	-0.8	-1.7	-1.9	-1.0	-	-1.0	-1.5	-1.7	-1.9	-2.1	-2.2	-1.4	-1.2	-1.3	-0.5	0.3	0.5	-		

NOTES

With exception of situations duly identified, the values presented in tables and graphs and others that also serve for the analysis are, in the case of quantitative series, year-on-year rates of change (y.r.) under three-month moving average (3-mma) or, in the case of qualitative series, 3-mma of seasonally adjusted values (s.a.) or of effective values (e.v). Annual information correspond to 12-mma, with the exception of variables presented as y.r. on stocks, where the annual value corresponds to the variation of the balance at the end of the year. Annualised variation (a.v.). Weight (w.).

Balances: differences between the percentage of respondents giving positive and negative replies.