



14th May 2026
TRANSPORT ACTIVITIES
Air Transport Flash Statistics
March 2026

MOVEMENT OF PASSENGERS AT AIRPORTS INCREASED BY 4.3%

In **March 2026**, 5.6 million passengers and 22.8 thousand tonnes of freight and mail were handled at national airports, corresponding to year-on-year variations of +4.3% and -0.01%, respectively (+3.3% and +0.6%, in the previous month, in the same order).

In that month, there was a daily average of 92.0 thousand passengers disembarked, higher than the 88.2 thousand recorded in March 2025, which represents an increase of 4.4%.

Considering the first quarter of 2026, the United Kingdom was the main country of origin and destination of flights. Spain and France ranked 2nd and 3rd, respectively, among the main countries of origin, reversing this order in countries of destination. Germany and Brazil completed the group of the top five countries.

Consult the information on the [Interactive Application](#) (available only in Portuguese).

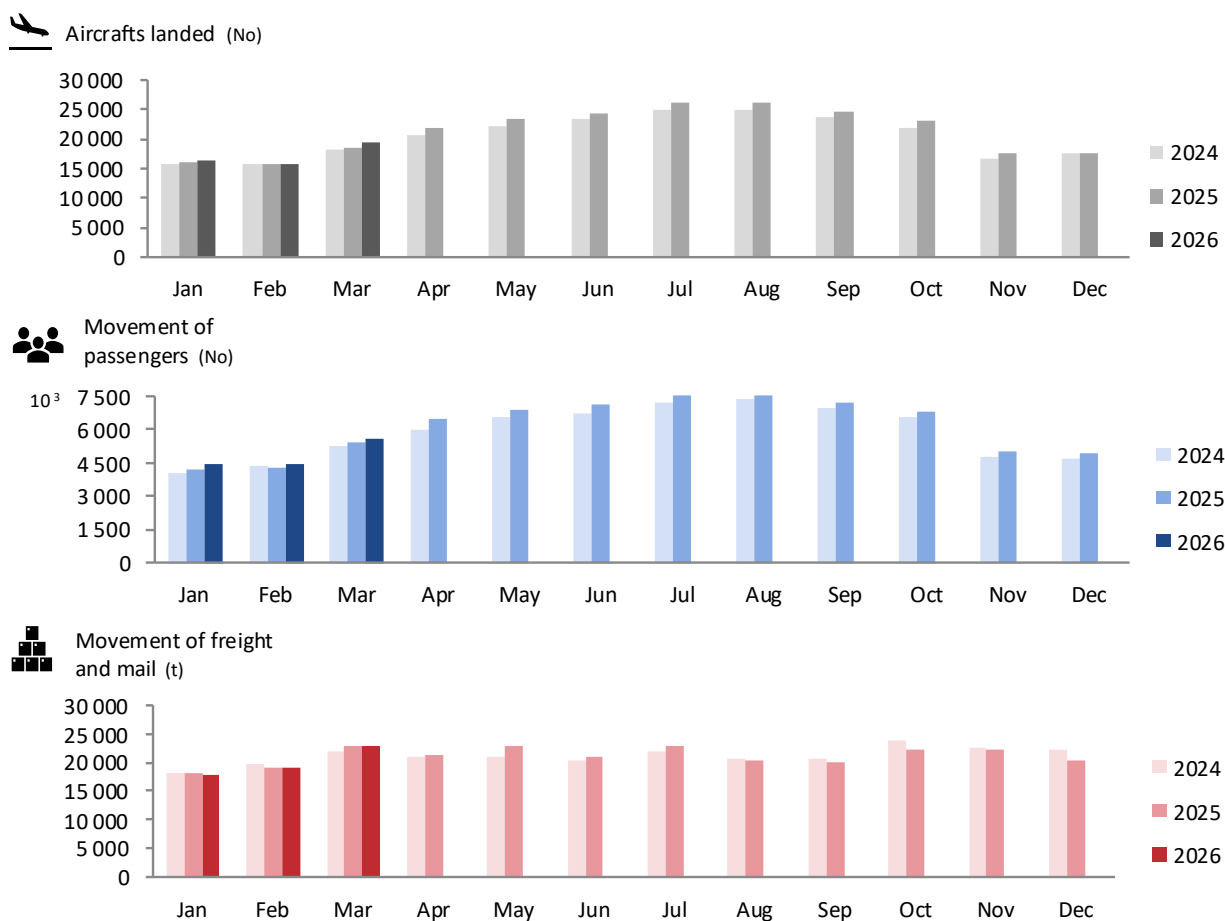
TRAFFIC AT NATIONAL AIRPORTS – MONTHLY VALUES

In **March 2026**, there were 19.4 thousand commercial aircraft landings at national airports. That month, 5.6 million passengers (embarked, disembarked and direct transits) and 22.8 thousand tonnes of freight and mail were handled. Compared with March 2025, there were increases of 3.6% in the number of aircraft landings and 4.3% of passengers handled, while the movement of freight and mail recorded a slight decrease of 0.01%. In the previous month, the year-on-year changes were: +0.7%, +3.3% and +0.6%, in the same order.

TRANSPORT ACTIVITIES
Air transport flash statistics – March 2026

Figure 1

AIRCRAFTS LANDED, PASSENGERS AND FREIGHT/MAIL MOVEMENT AT NATIONAL AIRPORTS



Source: Survey to airports and aerodromes (ANA/ANAC/Statistics Portugal)

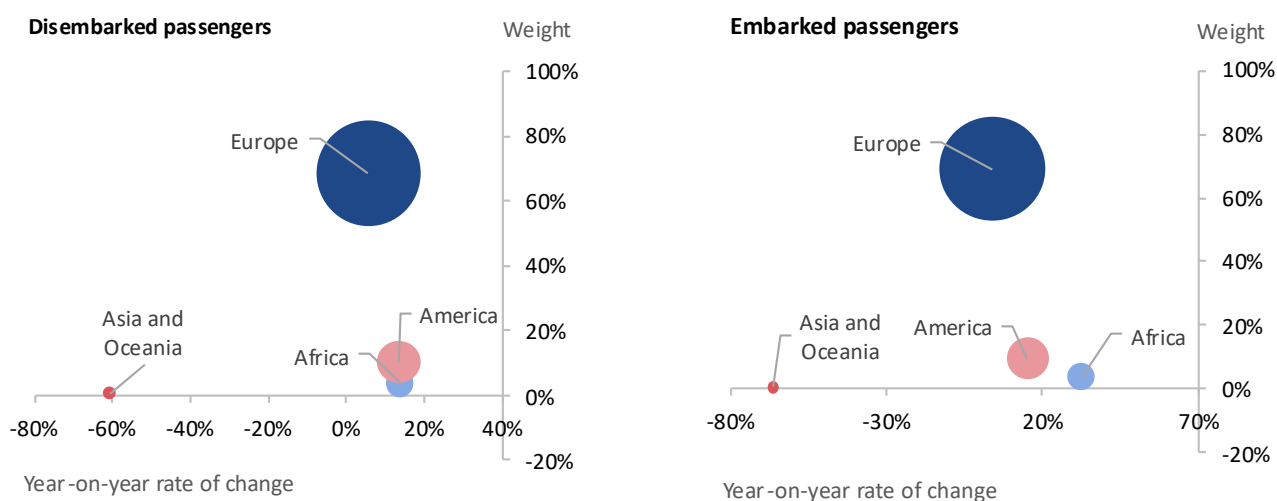
In March 2026, 83.4% of passengers disembarked corresponded to international traffic, reaching 2.4 million passengers (+5.5%¹). Europe remained the main origin of disembarked passengers, representing 68.7% of the total (+5.5%). The American continent continued to rank second, concentrating 10.3% of the total (+13.5%).

¹ Unless stated otherwise, the rates of change presented in this press release correspond to year-on-year rates of change.

Regarding embarked passengers, 82.8% corresponded to international traffic, totalling 2.3 million passengers (+5.1%). The European continent was the main destination of the embarked passengers (69.1% of the total), with an increase of 4.0% compared with March 2025. The American continent remained the second main destination (9.5% of the total; +15.2%).

Figure 2

PASSENGERS DISEMBARKED AND EMBARKED AT NATIONAL AIRPORTS BY NATURE AT INTERNATIONAL TRAFFIC,
 BY CONTINENT OF ORIGIN/DESTINATION – MARCH 2026

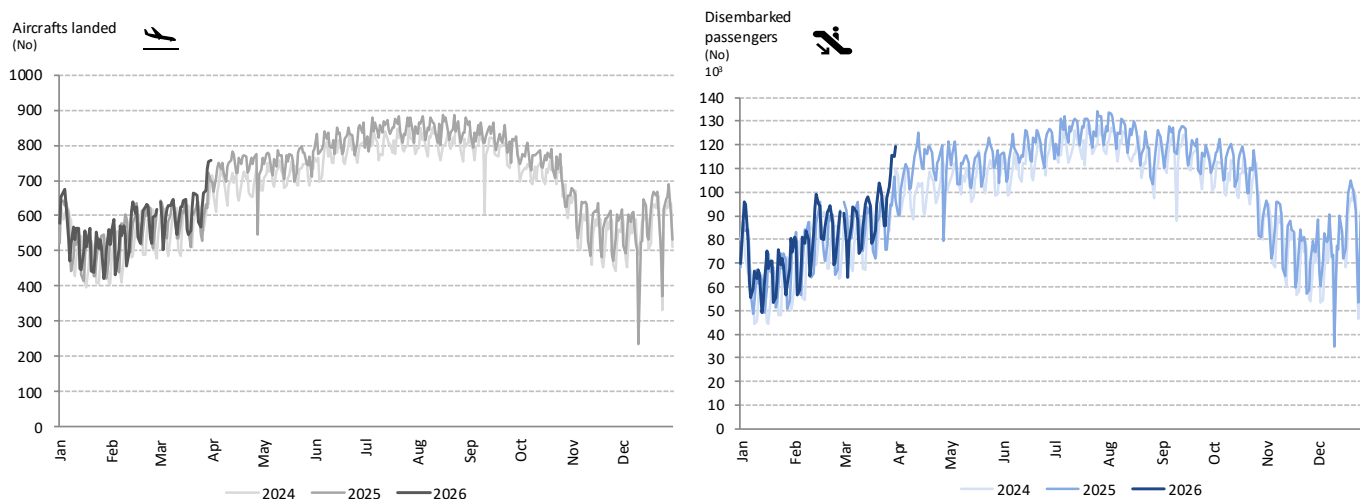


Source: Survey to airports and aerodromes (ANA/ANAC/Statistics Portugal)

Following the historic highs recorded in January and February, March recorded another historic high in the number of passengers handled at national airports. In that month, there was a daily average of 92.0 thousand passengers disembarked, higher than the 88.2 thousand recorded in March 2025, which represents an increase of 4.4%.

Figure 3

AIRCRAFTS LANDED AND DISEMBARKED PASSENGERS AT NATIONAL AIRPORTS – DAILY



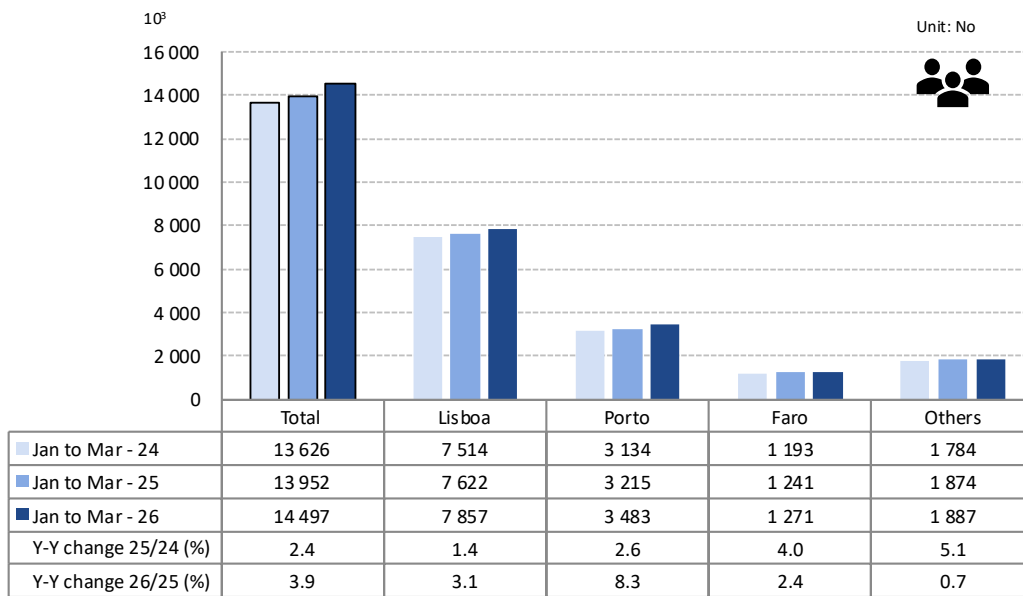
Source: Survey to airports and aerodromes (ANA/ANAC/Statistics Portugal)

TRAFFIC AT NATIONAL AIRPORTS – ACCUMULATED VALUES

In the **first quarter of 2026**, the movement of passengers at national airports increased by 3.9% compared with 2025 (+2.4% in 2025). Lisboa airport concentrated 54.2% of the total passengers handled, corresponding to 7.9 million passengers and a year-on-year growth of 3.1%. Porto airport recorded 3.5 million passengers handled (24.0% of the total), with an increase of 8.3%. Faro airport recorded 1.3 million passengers handled (8.8% of the total), representing a year-on-year decrease of 2.4%.

Figure 4

MOVEMENT OF PASSENGERS AT NATIONAL AIRPORTS



Source: Survey to airports and aerodromes (ANA/ANAC/Statistics Portugal)

Considering the passengers embarked and disembarked on international flights in the first quarter of 2026, the United Kingdom was the main country of origin and destination of flights with passengers. Compared with the same period of 2025, the number of passengers disembarking from the United Kingdom increased 3.9%, while the number of embarked passengers with that country as their destination increased 1.4%. Spain and France ranked 2nd and 3rd, respectively, among the main countries of origin, reversing this order in countries of destination. Germany and Brazil completed the group of the top five countries.

Table 1

MAIN COUNTRIES OF ORIGIN AND DESTINATION OF FLIGHTS WITH PASSENGERS AT NATIONAL AIRPORTS

Ranking	Country of origin (of the flight)	Jan to Mar 2026		Ranking	Country of destination (of the flight)	Jan to Mar 2026	
		Passengers disembarked (10 ³)	Y-on-Y change (%)			Passengers embarked (10 ³)	Y-on-Y change (%)
1	United Kingdom	815.7	3.9	1	United Kingdom	806.4	1.4
2	Spain	757.2	7.7	2	France	765.8	-10.6
3	France	753.8	-11.9	3	Spain	755.5	6.7
4	Germany	516.7	2.6	4	Germany	518.3	0.9
5	Brazil	446.1	23.3	5	Brazil	414.6	26.2

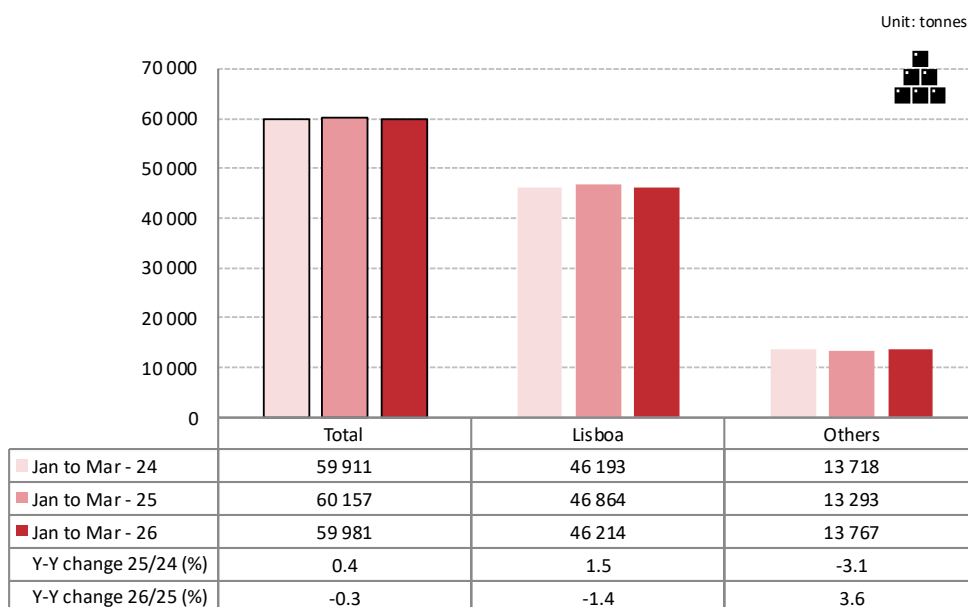
Source: Survey to airports and aerodromes (ANA/ANAC/Statistics Portugal)

In the first quarter of 2026, the movement of freight and mail at national airports decreased by 0.3% (+0.4% in 2025). Lisbon airport handled 46.2 thousand tonnes of freight and mail (77.0% of this total), corresponding to a decrease of 1.4%.

Considering the other airports, the movement of freight and mail increased by 3.6%.

Figure 5

FREIGHT AND MAIL MOVEMENT AT NATIONAL AIRPORTS



Source: Survey to airports and aerodromes (ANA/ANAC/Statistics Portugal)



METHODOLOGICAL NOTES

In this Press Release the following statistical data are used:

2026: preliminary results;

2025: provisional results;

2024: definitive results.

Main national airports (considered in this Press Release as national airports): Lisboa, Porto, Faro, Ponta Delgada, Madeira, Porto Santo, Beja, Horta, Flores, Santa Maria, Terceira, Pico, Graciosa, São Jorge, Corvo, Portimão, Bragança, Cascais, Vila Real and Viseu.

SOURCES:

Survey to airports and aerodromes (ANA/ANAC/Statistics Portugal)

MAIN CONCEPTS:

Commercial aviation - Air transport flight performed for the public transport of passengers, freight or mail, for remuneration and for hire.

Commercial air traffic - Movement of aircrafts, passengers, freight and mail in commercial aviation.

INTERACTIVE APPLICATION AT STATISTICS PORTUGAL:

[Interactive Application](#) (available only in Portuguese)

MONTHLY INDICATORS AT STATISTICS PORTUGAL PORTAL:

[Aircrafts landed \(No.\) in airports by Geographic localization, Type of traffic and Nature of traffic; Monthly](#)

[Aircrafts landed \(No.\) in airports by Continent of origin; Monthly](#)

[Aircrafts take-offs \(No.\) in airports by Geographic localization, Type of traffic and Nature of traffic; Monthly](#)

[Disembarked passengers \(No.\) in airports by Geographic localization, Type of traffic and Nature of traffic; Monthly](#)

[Disembarked passengers \(No.\) in Airports by Continent of origin; Monthly](#)

[Embarked passengers \(No.\) in airports by Geographic localization, Type of traffic and Nature of traffic; Monthly](#)

[Embarked passengers \(No.\) in airports by Destination continent; Monthly](#)

[Passengers in direct transit \(No.\) in airports by Geographic localization, Type of traffic and Nature of traffic; Monthly](#)

[Disembarked load \(t\) in airports by Geographic localization, Type of traffic and Nature of traffic; Monthly](#)

[Embarked load \(t\) in airports by Geographic localization, Type of traffic and Nature of traffic; Monthly](#)

[Disembarked mail \(t\) in airports by Geographic localization, Type of traffic and Nature of traffic; Monthly](#)

[Embarked mail \(t\) in airports by Geographic localization, Type of traffic and Nature of traffic; Monthly](#)



ACRONYMS AND DESIGNATIONS

ANA	Portugal Airports, S.A.
ANAC	National Civil Aviation Authority
INE	Statistics Portugal

Next Press Release (monthly) - Air Transport Flash Statistics – 15th June 2026

Next Press Release (quarterly) - Transport activities (Q1 2026) – 8th June 2026
