

16 April 2026

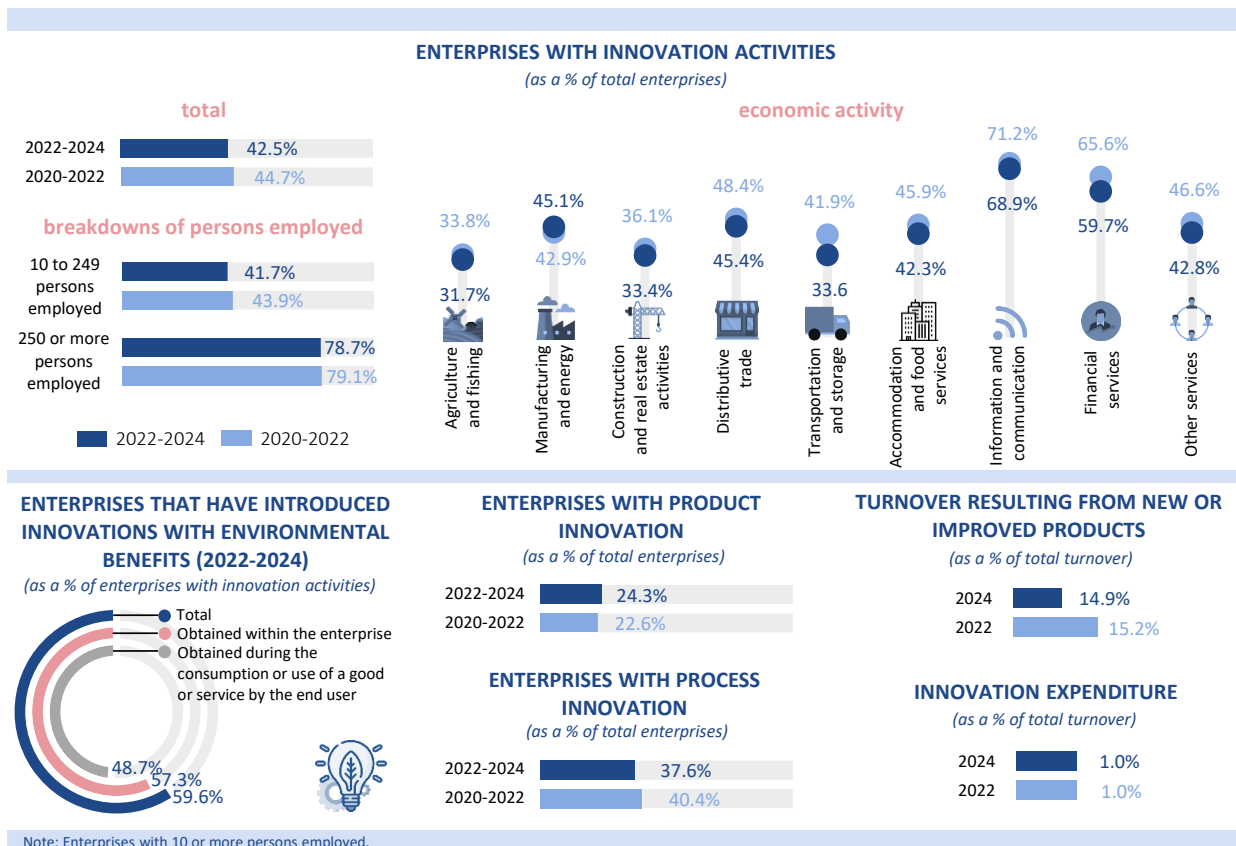
RESEARCH AND DEVELOPMENT – COMMUNITY INNOVATION SURVEY
2022-2024

IN THE PERIOD 2022-2024, 42.5% OF ENTERPRISES HAD INNOVATION ACTIVITIES AND 24.3% INTRODUCED PRODUCT INNOVATIONS

Between 2022-2024¹, 42.5% of enterprises² carried out some form of innovation activity, a lower result than that observed in the period 2020-2022 (44.7%). Regarding the types of innovation, 24.3% of enterprises introduced product innovations (goods or services) and 37.6% implemented process innovations (22.6% and 40.4%, respectively, in the period 2020-2022). The incidence of innovation varies significantly with enterprise size: 78.7% of enterprises with 250 or more persons employed developed innovation activities and 41.7% of the remaining companies. By economic activity, the *Information and communication* sector (68.9%) had the highest proportion of innovative enterprises, followed by *Financial services* (59.7%).

Figure 1

INNOVATION IN ENTERPRISES IN PORTUGAL



¹ In the 2024 edition of the CIS, the reference period of the information is the period from 2022 to 2024 for most of the variables, except for the variables related to turnover, expenditure, and some information about each enterprise that refer to 2024.

² The results always refer to enterprises with 10 or more persons employed.