

14th March 2026
TRANSPORT ACTIVITIES
Air Transport Flash Statistics
February 2026

MOVEMENT OF PASSENGERS AT AIRPORTS INCREASES BY 3.3%

In **February 2026**, 4.5 million passengers and 19.2 thousand tonnes of freight and mail were handled at national airports, corresponding to year-on-year variations of +3.3% and +0.6%, respectively (+4.0% and -1.6%, in the previous month, in the same order).

In that month, there was a daily average of 81.2 thousand passengers disembarked, higher than the 78.6 thousand recorded in February 2025, which represents an increase of 3.3%.

Considering the first two months of 2026, Spain was the main country of origin of flights, followed by France and the United Kingdom. As the main destination, the United Kingdom ranked first, followed by Spain and France.

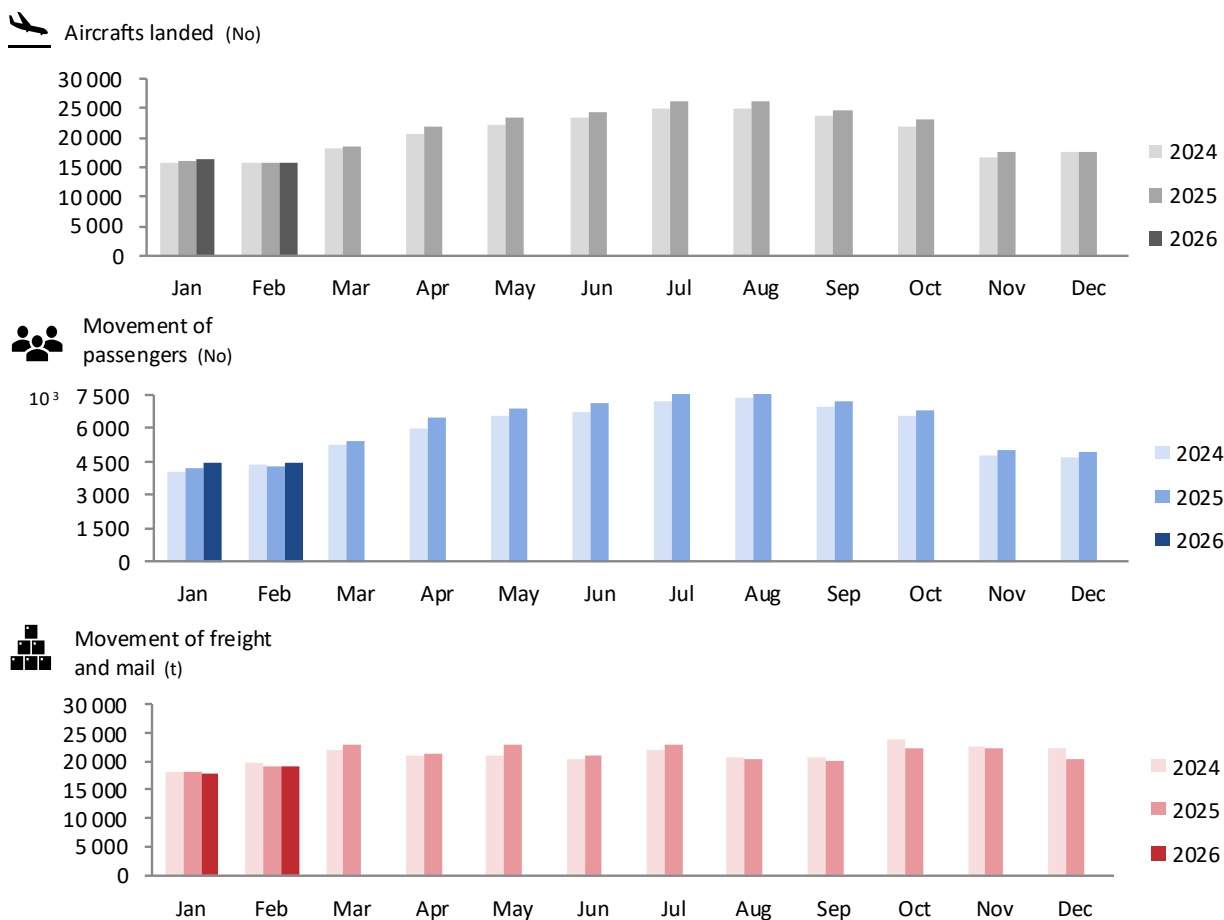
Consult the information on the [Interactive Application](#) (available only in Portuguese).

TRAFFIC AT NATIONAL AIRPORTS – MONTHLY VALUES

In **February 2026**, there were 15.8 thousand commercial aircraft landings at national airports. That month, 4.5 million passengers (embarked, disembarked and direct transits) and 19.2 thousand tonnes of freight and mail were handled. Compared with February 2025, these movements corresponded to year-on-year changes of +0.7% in the number of aircraft landings, +3.3% of passengers handled and +0.6% in freight and mail. In the previous month the year-on-year changes were: +2.9%, +4.0% and -1.6%, in the same order.

Figure 1

AIRCRAFTS LANDED, PASSENGERS AND FREIGHT/MAIL MOVEMENT AT NATIONAL AIRPORTS



Source: Survey to airports and aerodromes (ANA/ANAC/Statistics Portugal)

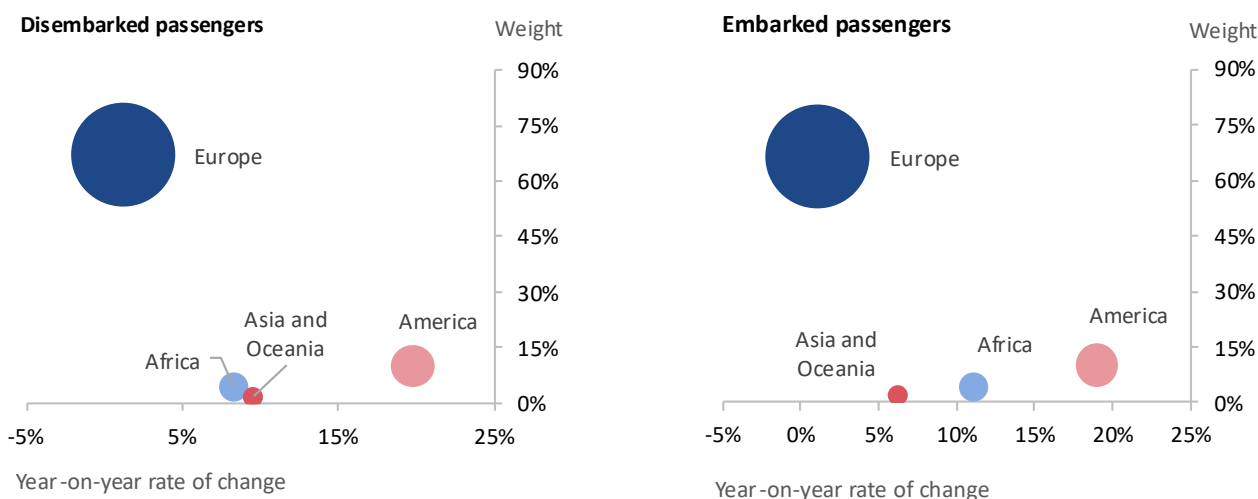
In February 2026, 83.2% of passengers disembarked corresponded to international traffic, reaching 1.9 million passengers (+3.6%¹). Most of these passengers' flights departed from the European continent, which represented 67.3% of the total, reflecting an increase of 1.2% compared with February 2025. The American continent remained the second main origin, concentrating 10.0% of the total (+19.7%).

¹ Unless stated otherwise, the rates of change presented in this press release correspond to year-on-year rates of change.

Regarding embarked passengers, 82.3% corresponded to international traffic, totalling 1.8 million passengers (+3.6%). The European continent was the main destination (66.5% of the total), with an increase of 1.1% compared with February 2025. The American continent was the second main destination of embarked passengers (10.1% of the total; +19.0%).

Figure 2

PASSENGERS DISEMBARKED AND EMBARKED AT NATIONAL AIRPORTS BY NATURE AT INTERNATIONAL TRAFFIC,
 BY CONTINENT OF ORIGIN/DESTINATION – FEBRUARY 2026

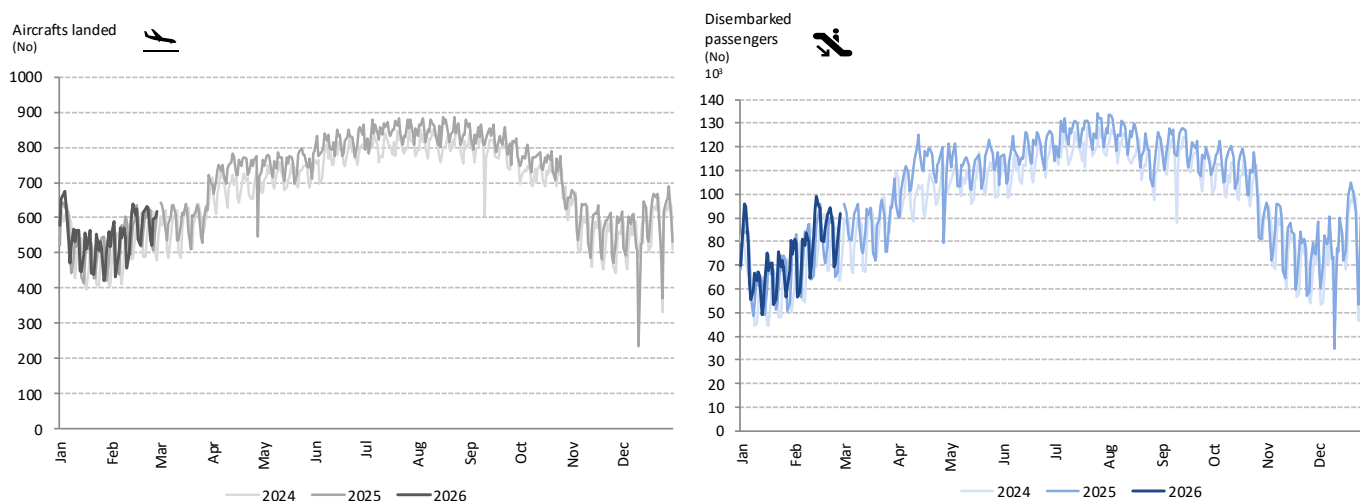


Source: Survey to airports and aerodromes (ANA/ANAC/Statistics Portugal)

Following a historic high in January, February recorded another historic high in the number of passengers handled at national airports. In February, an average of 81.2 thousand passengers per day disembarked, higher than 78.6 thousand recorded in the same month last year, corresponding to an increase of 3.3%.

Figure 3

AIRCRAFTS LANDED AND DISEMBARKED PASSENGERS AT NATIONAL AIRPORTS – DAILY



Source: Survey to airports and aerodromes (ANA/ANAC/Statistics Portugal)

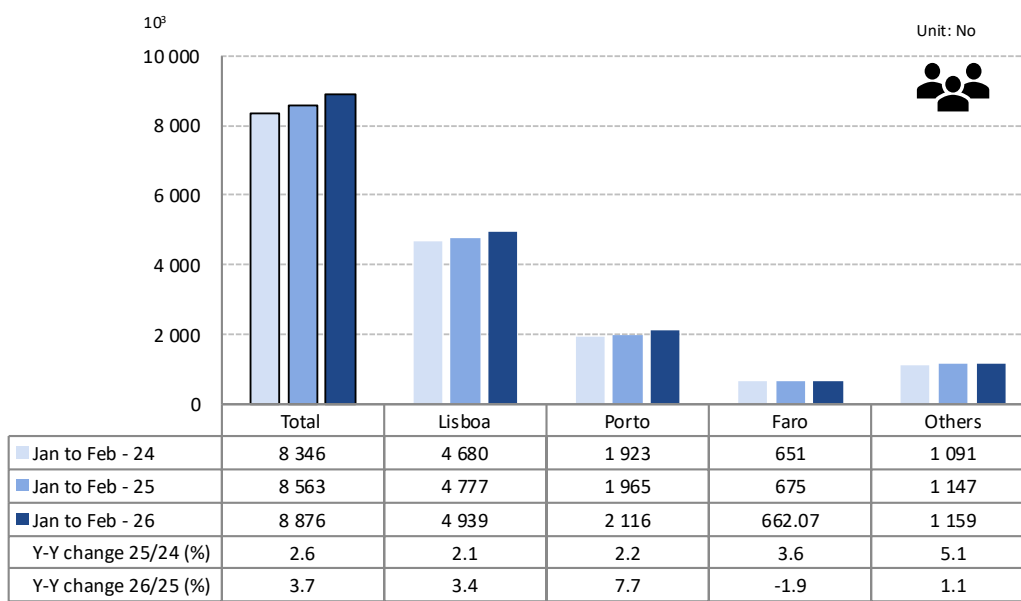
TRAFFIC AT NATIONAL AIRPORTS – ACCUMULATED VALUES

In the **first two months of 2026**, the movement of passengers at national airports increased by 3.7% compared with 2025 (+2.6% in 2025). Lisboa airport concentrated 55.6% of the total passengers, handling 4.9 million, which represents a year-on-year growth of 3.4%. Porto airport recorded 2.1 million passengers handled (23.8% of the total), with an increase of 7.7%. Faro airport recorded 662.1 thousand passengers handled (7.5% of the total), representing a year-on-year decrease of 1.9%.

It is worth noting that, in February, Funchal airport remained as the 3rd airport with the highest passenger traffic. Considering the first two months of 2026, this airport handled 713.7 thousand passengers (+5.1%), surpassing Faro airport.

Figure 4

MOVEMENT OF PASSENGERS AT NATIONAL AIRPORTS



Source: Survey to airports and aerodromes (ANA/ANAC/Statistics Portugal)

Considering the volume of passengers embarked and disembarked on international flights in the first two months of 2026, Spain was the main country of origin, recording a year-on-year growth of 5.3% in the number of passengers disembarking, followed by France (-11.2%) and the United Kingdom (+0.8%). In terms of destinations, the United Kingdom ranks first (+1.2% in the number of passengers embarking), followed by Spain (+5.3%) and France (-11.5%). Brazil and Germany alternated between 4th and 5th positions, depending on whether it is the country of origin or destination of the flights.

Table 1

MAIN COUNTRIES OF ORIGIN AND DESTINATION OF FLIGHTS WITH PASSENGERS AT NATIONAL AIRPORTS

Ranking	Country of origin (of the flight)	Jan to Feb 2026		Ranking	Country of destination (of the flight)	Jan to Feb 2026	
		Passengers disembarked (10 ³)	Y-on-Y change (%)			Passengers embarked (10 ³)	Y-on-Y change (%)
1	Spain	466.7	5.3	1	United Kingdom	476.8	1.2
2	France	463.5	-11.2	2	Spain	473.2	5.3
3	United Kingdom	447.6	0.8	3	France	460.7	-11.5
4	Brazil	291.8	23.6	4	Germany	298.8	-0.5
5	Germany	283.3	-0.8	5	Brazil	287.6	28.4

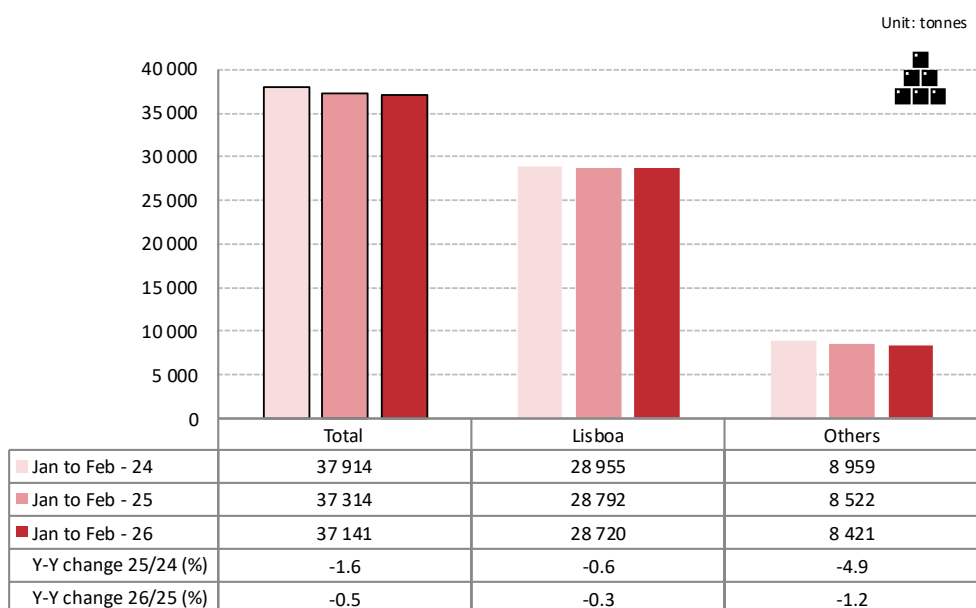
Source: Survey to airports and aerodromes (ANA/ANAC/Statistics Portugal)

In the first two months of 2026, the movement of freight and mail at national airports decreased by 0.5% (-1.6% in 2025). Lisbon airport handled 28.7 thousand tonnes (77.3% of this total), corresponding to a decrease of 0.3%.

Considering the other airports, the movement of freight and mail decreased by 1.2%.

Figure 5

FREIGHT AND MAIL MOVEMENT AT NATIONAL AIRPORTS



Source: Survey to airports and aerodromes (ANA/ANAC/Statistics Portugal)



METHODOLOGICAL NOTES

In this Press Release the following statistical data are used:

2026: preliminary results;

2025: provisional results;

2024: definitive results.

Main national airports (considered in this Press Release as national airports): Lisboa, Porto, Faro, Ponta Delgada, Madeira, Porto Santo, Beja, Horta, Flores, Santa Maria, Terceira, Pico, Graciosa, São Jorge, Corvo, Portimão, Bragança, Cascais, Vila Real and Viseu.

SOURCES:

Survey to airports and aerodromes (ANA/ANAC/Statistics Portugal)

MAIN CONCEPTS:

Commercial aviation - Air transport flight performed for the public transport of passengers, freight or mail, for remuneration and for hire.

Commercial air traffic - Movement of aircrafts, passengers, freight and mail in commercial aviation.

INTERACTIVE APPLICATION AT STATISTICS PORTUGAL:

[Interactive Application](#) (available only in Portuguese)

MONTHLY INDICATORS AT STATISTICS PORTUGAL PORTAL:

[Aircrafts landed \(No.\) in airports by Geographic localization, Type of traffic and Nature of traffic; Monthly](#)

[Aircrafts landed \(No.\) in airports by Continent of origin; Monthly](#)

[Aircrafts take-offs \(No.\) in airports by Geographic localization, Type of traffic and Nature of traffic; Monthly](#)

[Disembarked passengers \(No.\) in airports by Geographic localization, Type of traffic and Nature of traffic; Monthly](#)

[Disembarked passengers \(No.\) in Airports by Continent of origin; Monthly](#)

[Embarked passengers \(No.\) in airports by Geographic localization, Type of traffic and Nature of traffic; Monthly](#)

[Embarked passengers \(No.\) in airports by Destination continent; Monthly](#)

[Passengers in direct transit \(No.\) in airports by Geographic localization, Type of traffic and Nature of traffic; Monthly](#)

[Disembarked load \(t\) in airports by Geographic localization, Type of traffic and Nature of traffic; Monthly](#)

[Embarked load \(t\) in airports by Geographic localization, Type of traffic and Nature of traffic; Monthly](#)

[Disembarked mail \(t\) in airports by Geographic localization, Type of traffic and Nature of traffic; Monthly](#)

[Embarked mail \(t\) in airports by Geographic localization, Type of traffic and Nature of traffic; Monthly](#)



ACRONYMS AND DESIGNATIONS

ANA	Portugal Airports, S.A.
ANAC	National Civil Aviation Authority
INE	Statistics Portugal

Next Press Release (monthly) - Air Transport Flash Statistics – 14th May 2026

Next Press Release (quarterly) - Transport activities (Q1 2026) – 8th June 2026
