

13<sup>th</sup> March 2026  
TRANSPORT ACTIVITIES  
Air Transport Flash Statistics  
January 2026

## NATIONAL AIRPORTS HANDLED, IN JANUARY, 4,4 MILLION PASSENGERS

In **January 2026**, 4.4 million passengers and 17.9 thousand tonnes of freight and mail were handled at national airports, corresponding to year-on-year variations of +4.0% and -1.6%, respectively (+4.6% and -8.8%, in the previous month, in the same order).

In that month, there was a daily average of 68.2 thousand passengers disembarked, higher than 65.6 thousand recorded in January 2025, which represents an increase of 3.9%.

Spain was the main country of origin for passenger flights, while France occupied the second position, with opposite positions being observed as the main countries of destination. The United Kingdom ranked third as the main country of origin and destination for passenger flights.

Consult the information on the [Interactive Application](#) (available only in Portuguese).

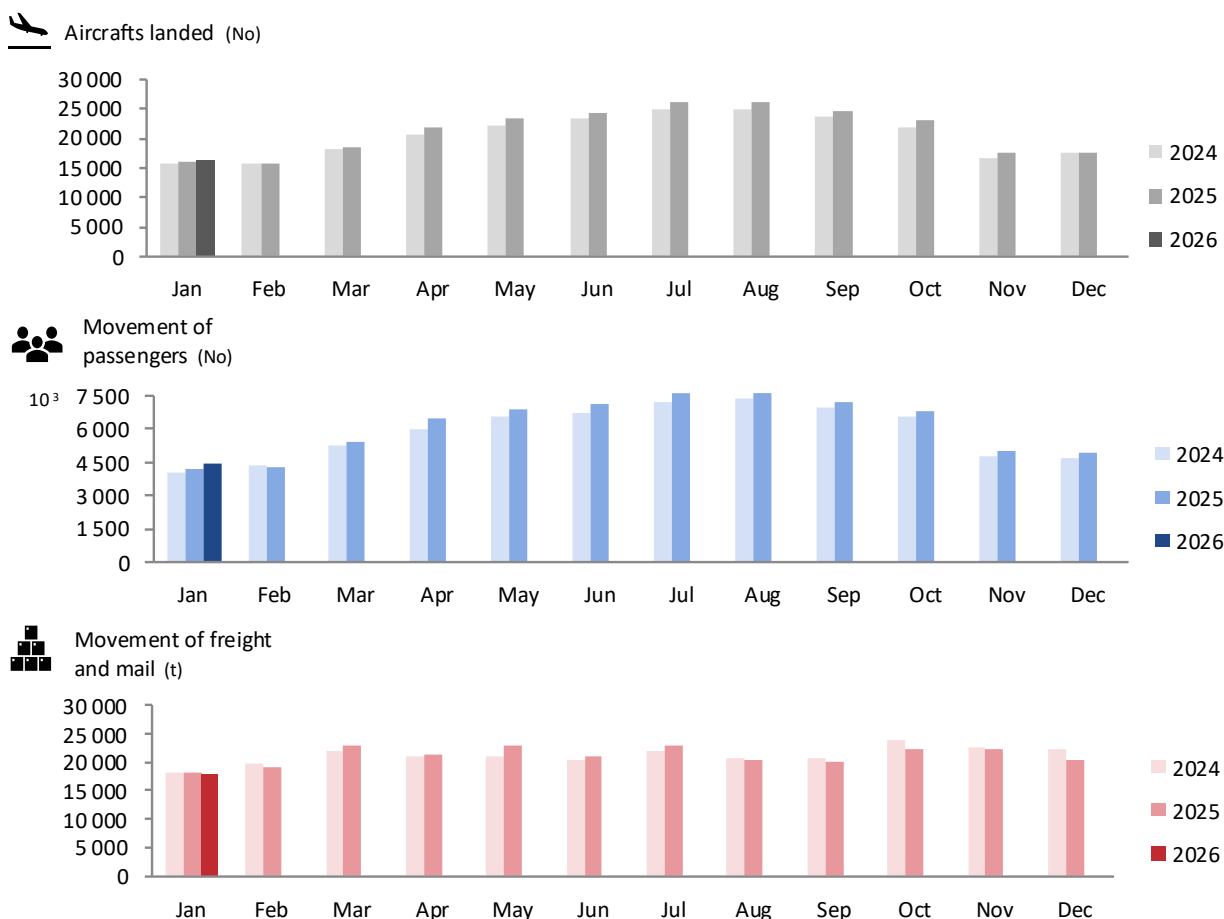
---

### 4.4 MILLION PASSENGERS HANDLED AT NATIONAL AIRPORTS

In **January 2026**, there were 16.5 thousand commercial aircraft landings at national airports. That month, 4.4 million passengers (embarked, disembarked and direct transits) and 17.9 thousand tonnes of freight and mail were handled. Compared with January 2025, these movements corresponded to year-on-year changes of +2.9% in the number of aircraft landings, +4.0% of passengers handled and -1.6% in freight and mail. In the previous month the year-on-year changes were: +1.4%, +4.6% and -8.8%, in the same order.

Figure 1

## AIRCRAFTS LANDED, PASSENGERS AND FREIGHT/MAIL MOVEMENT AT NATIONAL AIRPORTS



Source: Survey to airports and aerodromes (ANA/ANAC/Statistics Portugal)

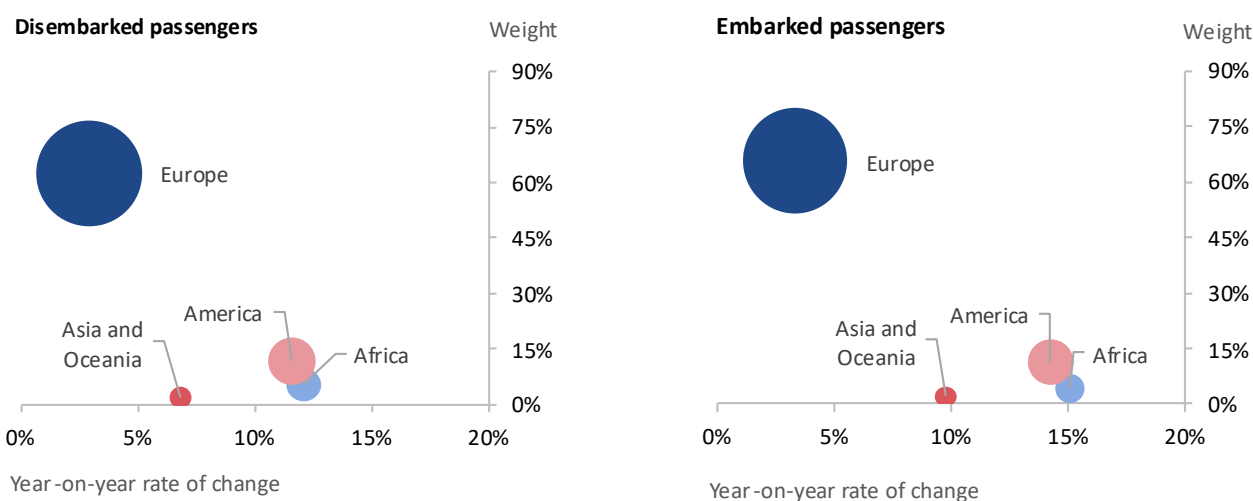
In January 2026, 81.8% of passengers disembarked at national airports corresponded to international traffic, reaching 1.7 million passengers (+4.7%<sup>1</sup>). Most of these passengers' flights departed from the European continent, which represented 62.6% of the total, reflecting an increase of 2.9% compared with January 2025. The American continent remained the second main origin, concentrating 11.9% of the total passengers disembarked (+11.6%).

<sup>1</sup> Unless stated otherwise, the rates of change presented in this press release correspond to year-on-year rates of change.

Regarding embarked passengers, 83.2% corresponded to international traffic, totalling 1.9 million passengers (+5.4%). The European continent was the main destination (65.7% of the total), recording an increase of 3.3% compared with January 2025. Airports of the American continent were the second main destination of embarked passengers (11.2% of the total; +14.2%).

Figure 2

PASSENGERS DISEMBARKED AND EMBARKED AT NATIONAL AIRPORTS BY NATURE AT INTERNATIONAL TRAFFIC,  
 BY CONTINENT OF ORIGIN/DESTINATION – JANUARY 2026

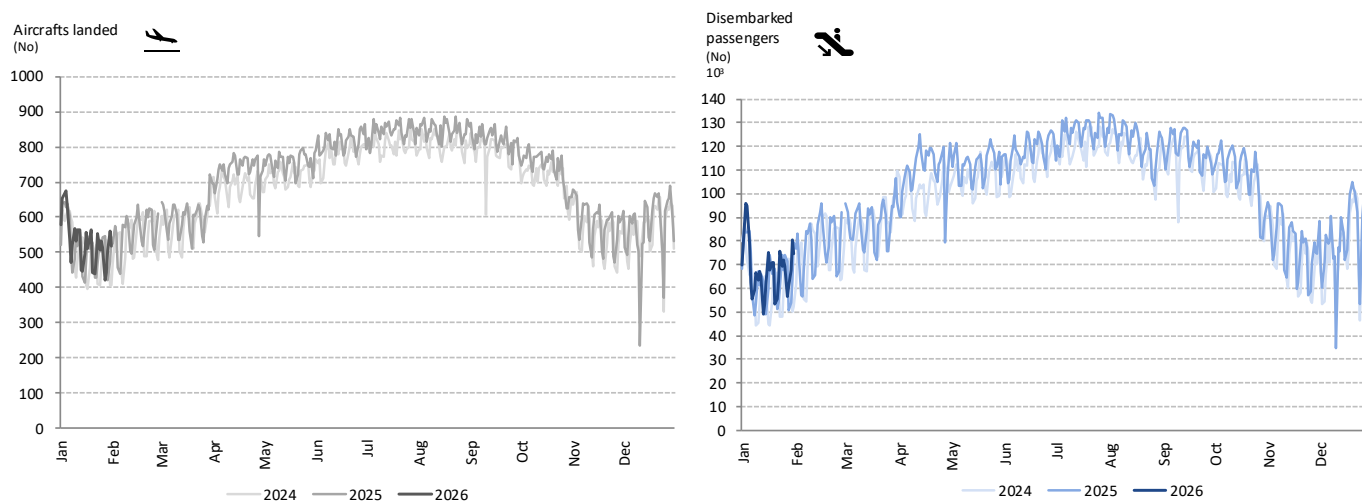


Source: Survey to airports and aerodromes (ANA/ANAC/Statistics Portugal)

At the beginning of 2026, an historic high in the monthly number of passengers at national airports continued to be recorded. In January, an average of 68.2 thousand passengers per day disembarked, higher than 65.6 thousand recorded in the same month last year, corresponding to an increase of 3.9%.

Figure 3

## AIRCRAFTS LANDED AND DISEMBARKED PASSENGERS AT NATIONAL AIRPORTS – DAILY



Source: Survey to airports and aerodromes (ANA/ANAC/Statistics Portugal)

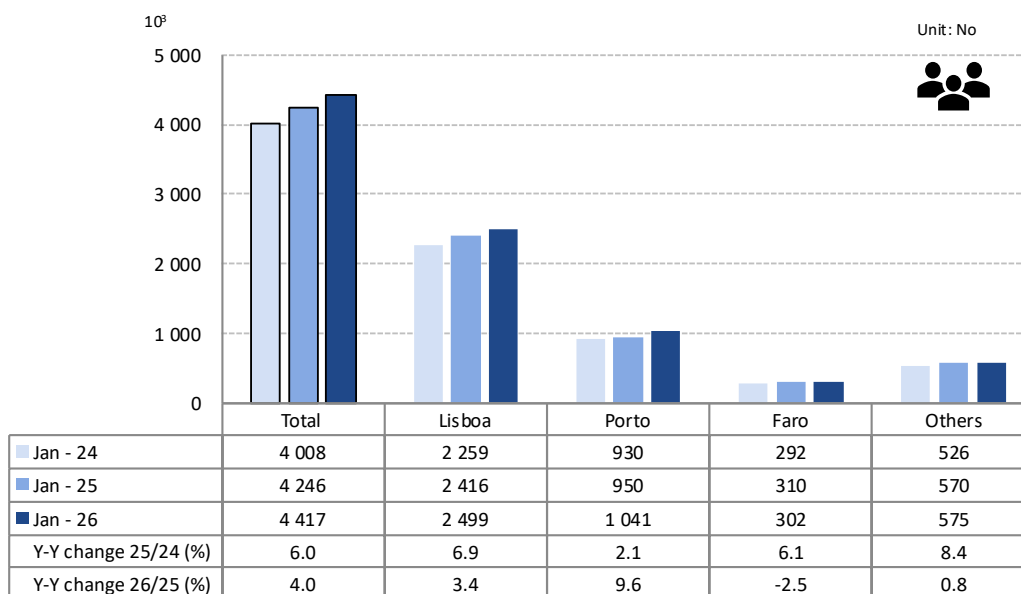
PASSENGER TRAFFIC AT FUNCHAL AIRPORT SURPASSED THAT OF FARO, MAKING IT THE 3<sup>RD</sup> LARGEST IN TERMS OF TRAFFIC

In **January 2026**, Lisboa airport concentrated 56.6% of the total passengers, handling 2.5 million, which represents a year-on-year growth of 3.4%. Porto airport recorded 1.0 million passengers handled, corresponding to 23.6% of the total and an increase of 9.6%. Faro airport recorded 302.1 thousand passengers handled (6.8% of the total), representing a year-on-year increase of 2.5%.

It is worth noting that Funchal airport was the 3<sup>rd</sup> airport with the highest passenger traffic in January 2026 (345.9 thousand; +4.8%), surpassing Faro airport.

Figure 4

## MOVEMENT OF PASSENGERS AT NATIONAL AIRPORTS



Source: Survey to airports and aerodromes (ANA/ANAC/Statistics Portugal)

Considering the volume of passengers embarked and disembarked on international flights in January 2026, Spain was the main country of origin, recording a year-on-year growth of 5.6% in the number of passengers disembarking, followed by France (-3.8%). As destinations, the positions were reversed: France occupied the first position (-4.1% in the number of passengers embarking), followed by Spain (+5.4%). The United Kingdom ranked 3<sup>rd</sup> as the main country of origin and destination, recording year-on-year growth in both the number of passengers disembarking (+1.5%) and embarking (+3.2%). Brazil and Germany alternated between 4<sup>th</sup> and 5<sup>th</sup> positions, depending on whether it is the country of origin or destination of the flights.

Table 1

## MAIN COUNTRIES OF ORIGIN AND DESTINATION OF FLIGHTS WITH PASSENGERS AT NATIONAL AIRPORTS

Ranking	Country of origin (of the flight)	Jan 2026		Ranking	Country of destination (of the flight)	Jan 2026	
		Passengers disembarked (10 <sup>3</sup> )	Y-on-Y change (%)			Passengers embarked (10 <sup>3</sup> )	Y-on-Y change (%)
1	Spain	229.9	5.6	1	France	246.8	-4.1
2	France	221.9	-3.8	2	Spain	240.6	5.4
3	United Kingdom	193.4	1.5	3	United Kingdom	239.7	3.2
4	Brazil	155.8	18.3	4	Germany	151.9	-1.0
5	Germany	125.0	-0.9	5	Brazil	150.9	26.3

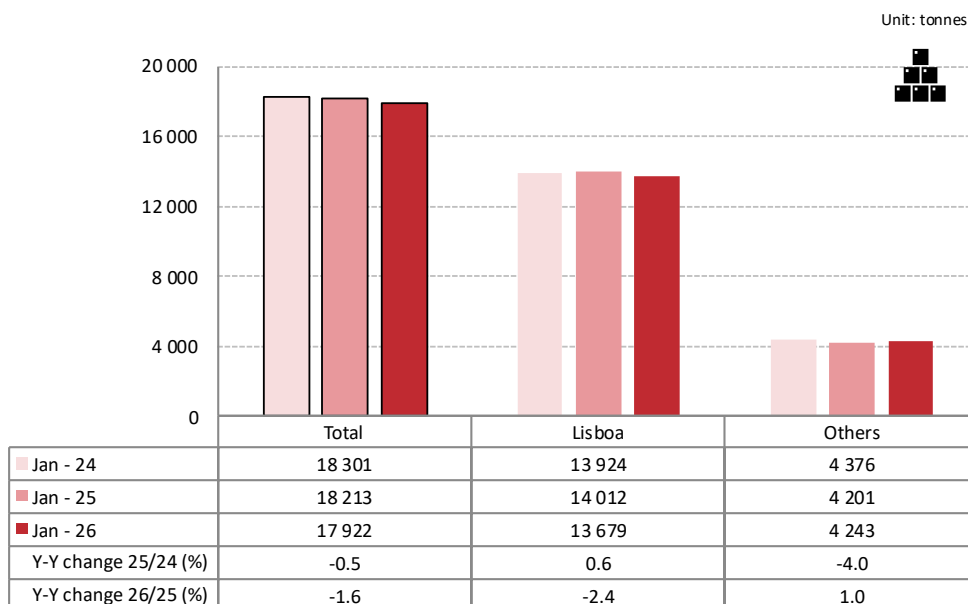
Source: Survey to airports and aerodromes (ANA/ANAC/Statistics Portugal)

In January 2026, the movement of freight and mail at national airports decreased by 1.6%. Lisbon airport handled 13.7 thousand tonnes (76.3% of this total), which represented a decrease of 2.4%.

Considering the other airports, the movement of freight and mail increased by 1.0%.

Figure 5

## FREIGHT AND MAIL MOVEMENT AT NATIONAL AIRPORTS



Source: Survey to airports and aerodromes (ANA/ANAC/Statistics Portugal)



## METHODOLOGICAL NOTES

In this Press Release the following statistical data are used:

2026: preliminary results;

2025: provisional results;

2024: definitive results.

**Main national airports** (considered in this Press Release as national airports): Lisboa, Porto, Faro, Ponta Delgada, Madeira, Porto Santo, Beja, Horta, Flores, Santa Maria, Terceira, Pico, Graciosa, São Jorge, Corvo, Portimão, Bragança, Cascais, Vila Real and Viseu.

## SOURCES:

Survey to airports and aerodromes (ANA/ANAC/Statistics Portugal)

## MAIN CONCEPTS:

**Commercial aviation** - Air transport flight performed for the public transport of passengers, freight or mail, for remuneration and for hire.

**Commercial air traffic** - Movement of aircrafts, passengers, freight and mail in commercial aviation.

## INTERACTIVE APPLICATION AT STATISTICS PORTUGAL:

[Interactive Application \(available only in Portuguese\)](#)

## MONTHLY INDICATORS AT STATISTICS PORTUGAL PORTAL:

[Aircrafts landed \(No.\) in airports by Geographic localization, Type of traffic and Nature of traffic; Monthly](#)

[Aircrafts landed \(No.\) in airports by Continent of origin; Monthly](#)

[Aircrafts take-offs \(No.\) in airports by Geographic localization, Type of traffic and Nature of traffic; Monthly](#)

[Disembarked passengers \(No.\) in airports by Geographic localization, Type of traffic and Nature of traffic; Monthly](#)

[Disembarked passengers \(No.\) in Airports by Continent of origin; Monthly](#)

[Embarked passengers \(No.\) in airports by Geographic localization, Type of traffic and Nature of traffic; Monthly](#)

[Embarked passengers \(No.\) in airports by Destination continent; Monthly](#)

[Passengers in direct transit \(No.\) in airports by Geographic localization, Type of traffic and Nature of traffic; Monthly](#)

[Disembarked load \(t\) in airports by Geographic localization, Type of traffic and Nature of traffic; Monthly](#)

[Embarked load \(t\) in airports by Geographic localization, Type of traffic and Nature of traffic; Monthly](#)

[Disembarked mail \(t\) in airports by Geographic localization, Type of traffic and Nature of traffic; Monthly](#)

[Embarked mail \(t\) in airports by Geographic localization, Type of traffic and Nature of traffic; Monthly](#)



## ACRONYMS AND DESIGNATIONS

ANA	Portugal Airports, S.A.
ANAC	National Civil Aviation Authority
INE	Statistics Portugal

---

**Next Press Release (monthly) - Air Transport Flash Statistics – 14<sup>th</sup> April 2026**

**Next Press Release (quarterly) - Transport activities (Q1 2026) – 8<sup>th</sup> June 2026**

---