



20 June 2025

Map on Facilities and Services of General Interest (CE-SIG)

INTERACTIVE APPLICATION

MAP ON FACILITIES AND SERVICES OF GENERAL INTEREST (CE-SIG) INTERACTIVE APPLICATION

The interactive application [Map on Facilities and Services of General Interest](#) (CE-SIG), part of [StatsLab](#) – Statistics under development, provides research and spatial analysis tools that allow consultation of facilities and services of general interest, of a public or private institutional nature, with results geolocated on a point basis.

The CE-SIG application also allows the capture of the level of provision of services of general interest to the population and the monitoring of territorial development patterns. This application also provides information characterizing the facilities and services provided, as well as the territories in which they are located, and information on the geographies of accessibility and demand for the facilities/services.

Statistics Portugal publishes today the Map on Facilities and Services of General Interest (CE-SIG), one of the statistical products developed within the scope of the Territorial Cohesion and Social Services of General Interest (POAT 2020) project that aims to support the monitoring of the 2021-2027 Cohesion Policy Programming cycle.

The application developed by Statistics Portugal is based on a WebGIS platform, which offers research and spatial analysis tools, allowing consultation of facilities and services of general interest, of a public or private institutional nature, for the country, with results located on a point basis referenced to this facility.

All data related to equipment and services within the scope of CE-SIG come from various sources, and are subject to validation, processing and integration with other existing databases at Statistics Portugal, taking advantage of the potential of the information associated with the National Data Infrastructure.

The application provides information on the characterisation of the facility and services provided, as well as on the geographies of accessibility and demand for facility/services, namely service areas (based on physical distances and walking and driving times) and two types of catchment areas (potential and effective) and their associated metrics (see concepts in the methodological note at the end of the highlight).

Access to facilities and services is a relevant dimension for assessing the quality of life of populations and the cohesion of territories. Services of general interest aim to respond to the essential needs and fundamental rights of citizens and are based on the principles of solidarity and equal access, constituting a fundamental element in promoting economic, social and territorial cohesion, and sustainable development. These services may be of an economic or non-economic nature and cover various areas such as education, health, culture, civil protection, social services, housing and justice, among others, with accessibility, quality and cost being important indicators for their assessment.

INTERACTIVE APPLICATION CE-SIG – MAP ON FACILITIES AND SERVICES OF GENERAL INTEREST



In this first release facilities from four sectoral domains are made available: **Culture**, covering museums for the year 2023; **Education**, covering higher education establishments in the 2023/24 academic year; **Civil protection**, covering fire brigades from the year 2023; and **Health**, covering hospital establishments in 2022.

For each georeferenced facility, elements are provided to characterise it, such as services offered, human resources and materials available. In addition, territorial indicators are presented for the different geographic levels, such as the number of inhabitants, population density, and surface area. The combination of this information makes it possible to provide service areas for the facilities, calculated based on physical distances and time distances. For each of these areas, context indicators are presented, such as the resident population, population density, or the number of households and family dwellings. Mapping this information allows the visualisation of the geographic areas served by the georeferenced facilities, providing a new perspective of the territory.

This release corresponds to the first presentation of a project that should have future updates, carrying out the annual update of the information made available and the expansion of the offer of information to new sectoral and facility domains, as well as to other modes of transport.

At the same time, and taking advantage of the information produced in CE-SIG, indicators of accessibility to facilities and services of general interest are made available within the scope of the [IAssLocal project – Indicators of Asymmetry at Local and Interregional Level](#). IAssLocal, also developed within the context of the Territorial Cohesion and Social Services of General Interest (POAT 2020) project, aims to provide new indicators for the characterisation of the socioeconomic diversity of territories, taking advantage of the potential of the information associated with IND – Statistics Portugal National Data Infrastructure. As an example, at the end of this Press release, a Box with an analysis of the population's accessibility to hospital establishments is presented.

APPLICATION FEATURES

The opening screen of the CE-SIG application shows a map of mainland Portugal, where facilities from all the sectoral domains considered (Culture, Education, Civil Protection, Health) from the most recent year are represented, and it is possible to choose the sectors and the NUTS I region (Continente, R.A. dos Açores e R.A. da Madeira).

In the header, it is possible to consult the [Technical Note](#), the [About note \(i\)](#) and the [Help](#) section, where you can find navigation support videos. The platform is available in Portuguese and English and allows quick access to Statistics Portugal's website, through the button with its logo.

The buttons on the right-hand side assist navigation, allowing you to choose different base maps, turn different layers on and off (facility and services, geographic time reference, service and catchment areas), view legends, use zoom, return to the default map view and show the user's location.

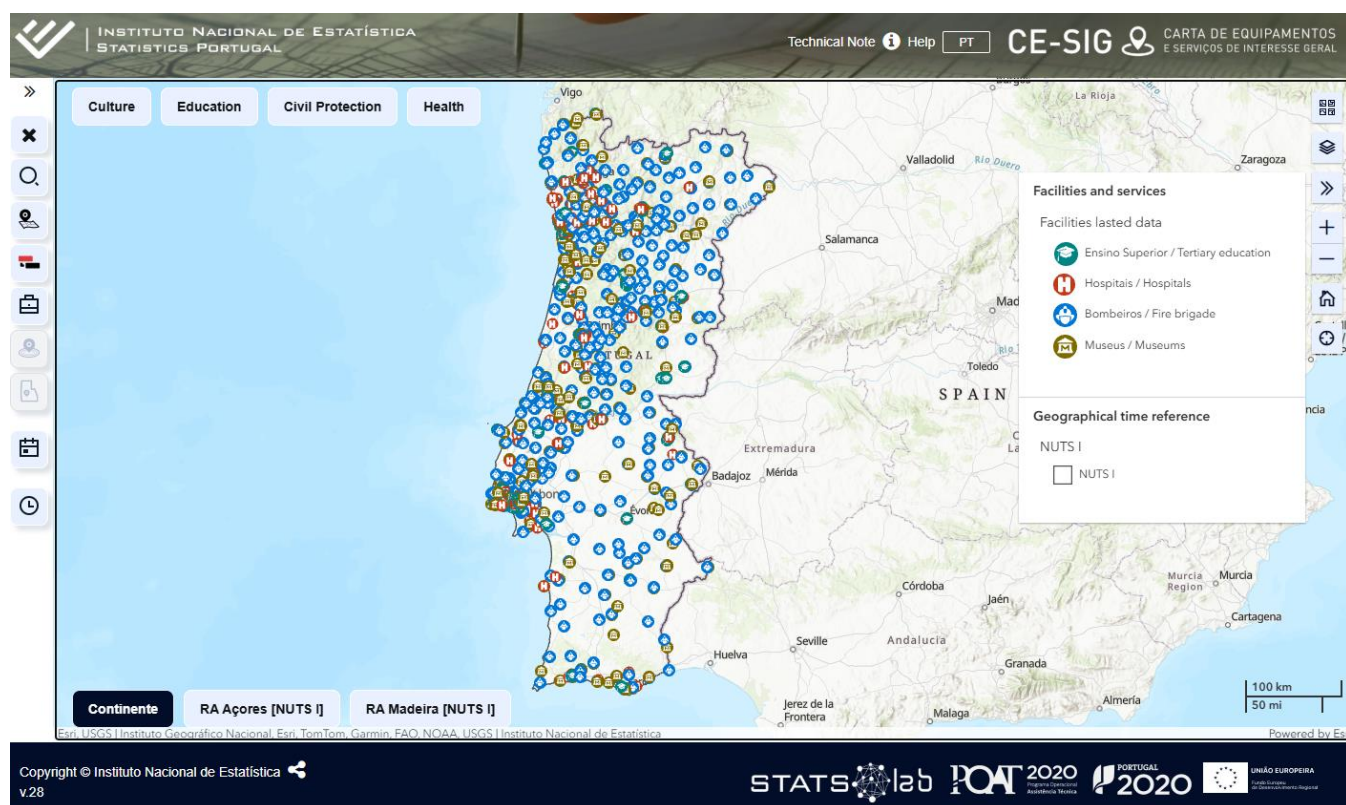
For more information, please consult the Help manual available in the application.

The application allows direct extraction of the displayed indicators into an Excel file. More detailed information on the data presented can be found in the "Technical Note" and the corresponding metadata.

The CE-SIG application allows you to carry out different types of searches: 1) through free text search, you can look for the name of a given piece of facility or a territorial unit; 2) through the buttons on the left, searches are available by territory, by type of facility/service, and by institutional nature.

It is also possible to filter by year of the facility reference universe and by geographic temporal reference (RTG)¹. [Fig. 1]

Figure 1. Opening screen of the CE-SIG interactive application



Source: Statistics Portugal, Map on Facilities and Services of General Interest (CE-SIG)

When clicking on the map, on a specific facility, territorial unit or service/catchment area, information boxes are displayed (Territory, Facility and Areas) where different types of indicators are made available (Context, Sector, Facility, Accessibility and Demand).

¹ Official Administrative Map on Portugal (CAOP) 2020 – Nomenclature of Territorial Units for Statistical Purposes (NUTS 2013) or Official Administrative Map on Portugal (CAOP) 2020 – Nomenclature of Territorial Units for Statistical Purposes (NUTS) 2024.

In the box of a given **Facility**, information characterising the facility is obtained, as well as the list of services provided, and accessibility and demand indicators, as in the following example for the Museu de Arte Contemporânea de Serralves [Fig. 2].

Figure 2. Facility box for the Museu de Arte Contemporânea de Serralves

Equipment: Museu de Arte Contemporânea de Serralves			
Museums			
Art			
Services (5): ^			
Action aimed at other publics (non-school)			
Action aimed at school publics			
Live show			
Permanent exhibition			
Temporary exhibition			
Characterization ^			
Institutional nature	2023	Private	
Museum operation	2023	Open permanently	
Polynucleate museum - number of nuclei	2023	4	
Parish	2023	União das freguesias de Lordelo do Ouro e Massarelos	
Municipality	2023	Porto	
NUTS III	2023	Área Metropolitana do Porto	
Facility indicators ^			
Goods of museums (No.)	2023	...	Mi
Persons employed (No.)	2023	...	Mi
Visitors (No.)	2023	...	Mi
Proportion of visitors integrated in school groups of museums (%)	2023	...	Mi
Proportion of foreign visitors of museums (%)	2023	...	Mi
Proportion of visitors with free entry by museum (%)	2023	...	Mi
Indicators of accessibility and demand ^			
Median access time by light car of the resident population in the equipment potential catchment area (min)	2023	4,4	Mi
Resident population in the equipment service area within 30 minutes by light car (No.)	2023	1 721 816	Mi
Resident population in the equipment service area within 60 minutes by light car (No.)	2023	3 405 664	Mi
Resident population in the equipment service area within 15 minutes on foot (No.)	2023	22 107	Mi
Resident population in the equipment service area within 30 minutes on foot (No.)	2023	73 180	Mi
Exportation date: 16-06-2025 19:18:46			

Source: Statistics Portugal, Map on Facilities and Services of General Interest (CE-SIG)

In the **Territory** box, are available territorial context indicators calculated from information from the 2021 Census (resident population, surface area, population density, private households, housing units and buildings), territorial indicators of the sectoral domains considered (culture, education, civil protection and health) and sectoral territorial indicators of accessibility and demand disaggregated, whenever possible, to the parish level, as is the case of the União de freguesias de Lordelo do Ouro e Massarelos, where the Museu de Arte Contemporânea de Serralves is located [Fig. 3].

Figure 3. Territory Box of the União de Freguesias de Lordelo do Ouro e Massarelos

Parish: União das freguesias de Lordelo do Ouro e Massarelos			
Municipality: Porto			
Context indicators			
Resident population (No.)		2021	27 911 Mi
Area (km²)		2020	5,59 Mi
Population's density (No./ km²)		2021	4 993,02 Mi
Private households (No.)		2021	11 736 Mi
Living quarters (No.)		2021	14 953 Mi
Buildings (No.)		2021	3 485 Mi
Resident population (No.), M		2021	12 898 Mi
Resident population (No.), F		2021	15 013 Mi
Resident population (No.), MF, 0 - 14 years		2021	3 591 Mi
Resident population (No.), MF, 15 - 24 years		2021	2 865 Mi
Resident population (No.), MF, 25 - 64 years		2021	14 574 Mi
Resident population (No.), MF, 65 and more years		2021	6 881 Mi
Indicators of accessibility and demand			
Culture-Museums			
Proportion of resident population whose proximity to a museum is less than 30 minutes by light car (%)		2023	100,00 Mi
Proportion of resident population whose proximity to a museum is less than 60 minutes by light car (%)		2023	100,00 Mi
Proportion of resident population whose proximity to a museum is less than 15 minutes on foot (%)		2023	57,71 Mi
Proportion of resident population whose proximity to a museum is less than 30 minutes on foot (%)		2023	100,00 Mi
Median access time by light car of the resident population to the nearest museum (min)		2023	3,3 Mi
Median access time by foot of the resident population to the nearest museum (min)		2023	15,4 Mi
Sectorial indicators			
Culture-Museums			
Museums (No.), Total		2023	3 Mi
Museums (No.), Public		2023	2 Mi
Museums (No.), Private		2023	1 Mi
Museums (No.), Other		2023	0 Mi
Museums (No.), Art		2023	1 Mi
Museums (No.), Sciences and natural history		2023	0 Mi
Museums (No.), History, archeology, ethnography and anthropology		2023	1 Mi
Museums (No.), Thematic and territory		2023	1 Mi
Museums (No.), General and other		2023	0 Mi
Goods of museums (No.)		2023	... Mi
Persons employed (No.)		2023	... Mi

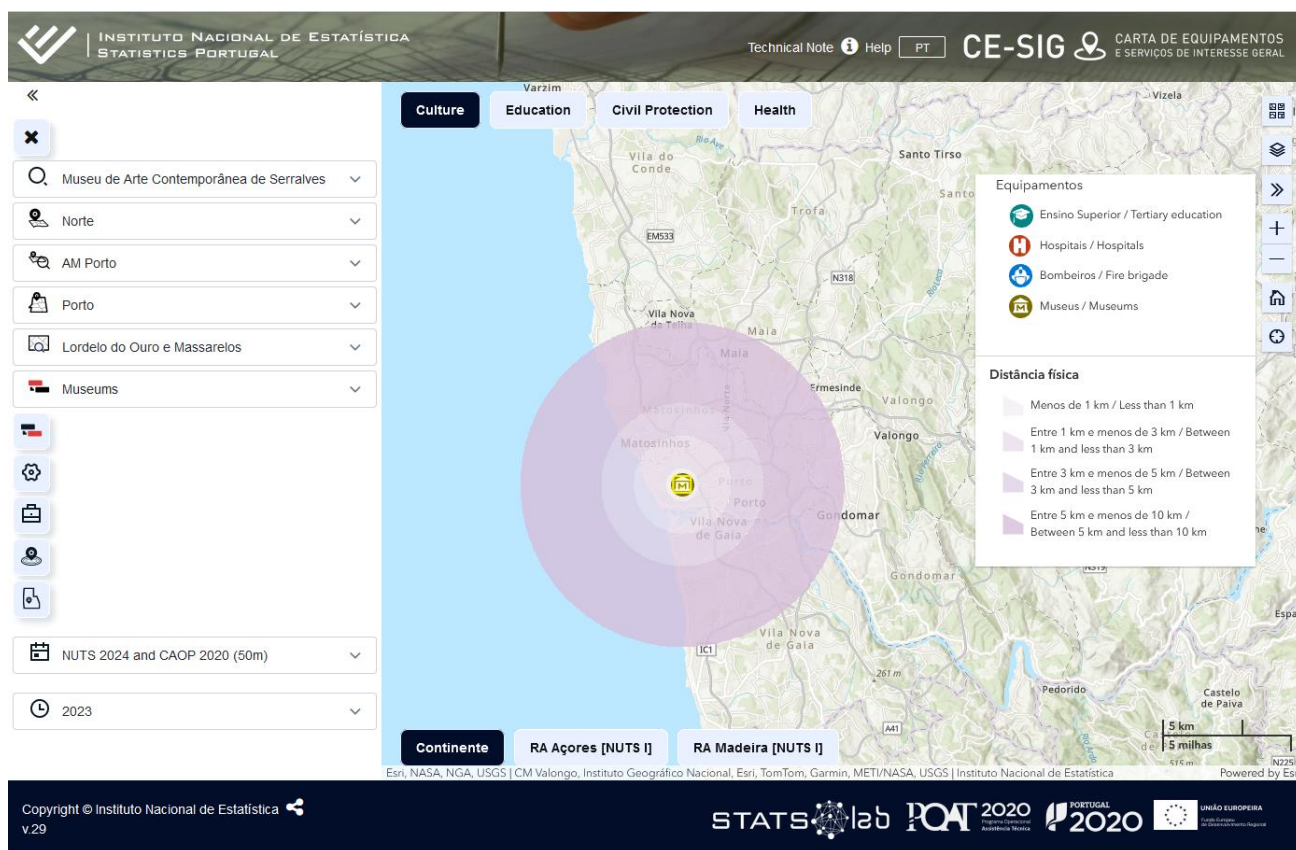
Exportation date: 2025-06-17 11:22:12

Source: Statistics Portugal, Map on Facilities and Services of General Interest (CE-SIG)

The application also displays the different types of **Service Areas** (physical distance, walking time and driving time) and **Catchment Areas** (potential and effective) of a given facility. Area boxes are associated with these areas and their respective ranges, which also provide context indicators calculated based on information from the 2021 Census (resident population, surface area, population density, private households, housing units and buildings).

In the case of the Museu de Arte Contemporânea de Serralves, you can see the physical distance service area drawn around the facility, with four distance levels [Fig. 4], as well as the information box relating to the selected distance (in this case, between 5 and less than 10 km) [Fig. 5].

Figure 4. Physical distance service area (Km) for the Museu de Arte Contemporânea de Serralves



Source: Statistics Portugal, Map on Facilities and Services of General Interest (CE-SIG)

Figure 5. Physical distance service area box (between 5 km and less than 10 km) from the Museu de Arte Contemporânea de Serralves

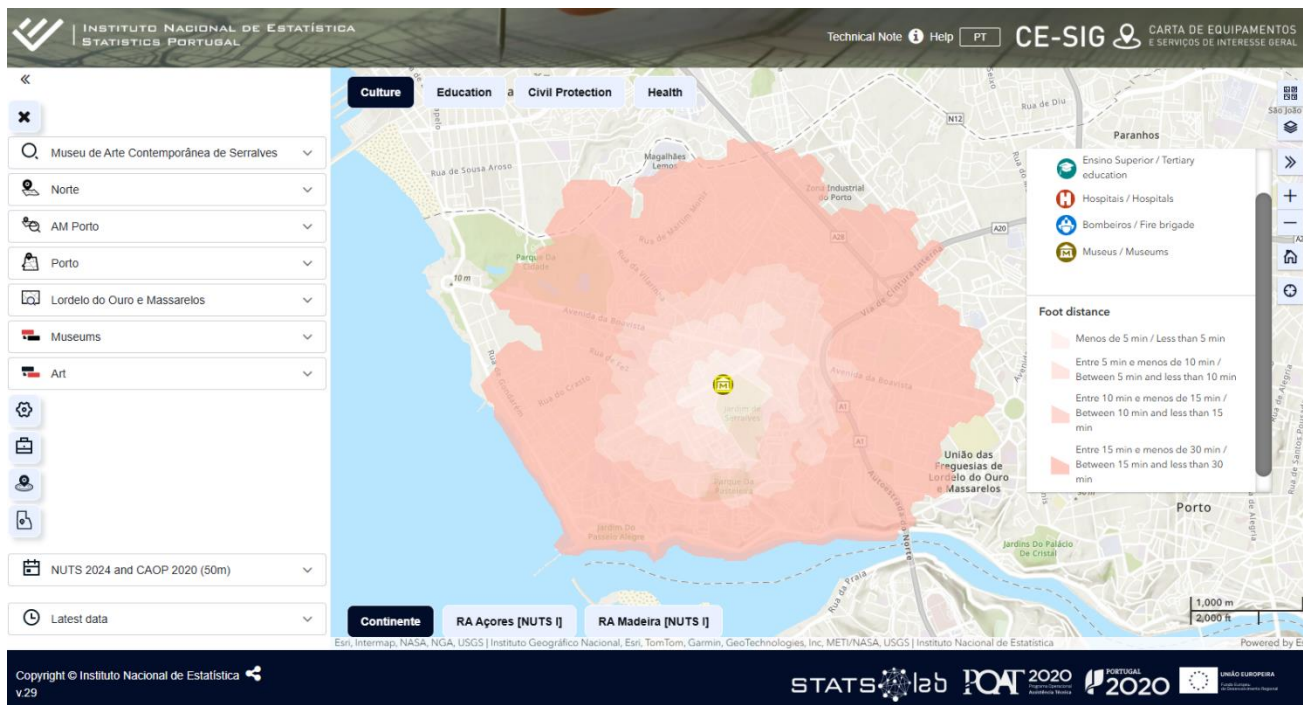
Equipment: Museu de Arte Contemporânea de Serralves			
Museums			
Art			
PHYSICAL SERVICE AREA: Between 5 km and less than 10 km			
Context indicators - museums			
Resident population in the equipment service area (No.)	2023	440 310	Mi
Area in the equipment service area (km²)	2023	235,61	Mi
Population's density in the equipment service area (No./ km²)	2023	1 868,83	Mi
Private households in the equipment service area (No.)	2023	179 813	Mi
Housing units in the equipment service area (No.)	2023	214 553	Mi
Buildings in the equipment service area (No.)	2023	81 989	Mi

Exportation date: 2025-06-17 10:23:40

Source: Statistics Portugal, Map on Facilities and Services of General Interest (CE-SIG)

You can also consult the walking time service area for the same museum, which is divided into four time intervals [Fig. 6], and the information box for the selected walking distance (in this case, 10 to 15 minutes). [Fig. 7].

Figure 6. Walking time service area (min) for the Museu de Arte Contemporânea de Serralves



Source: Statistics Portugal, Map on Facilities and Services of General Interest (CE-SIG)

Figure 7. Walking time service area box (between 10 min and less than 15 min) for the Museu de Arte Contemporânea de Serralves

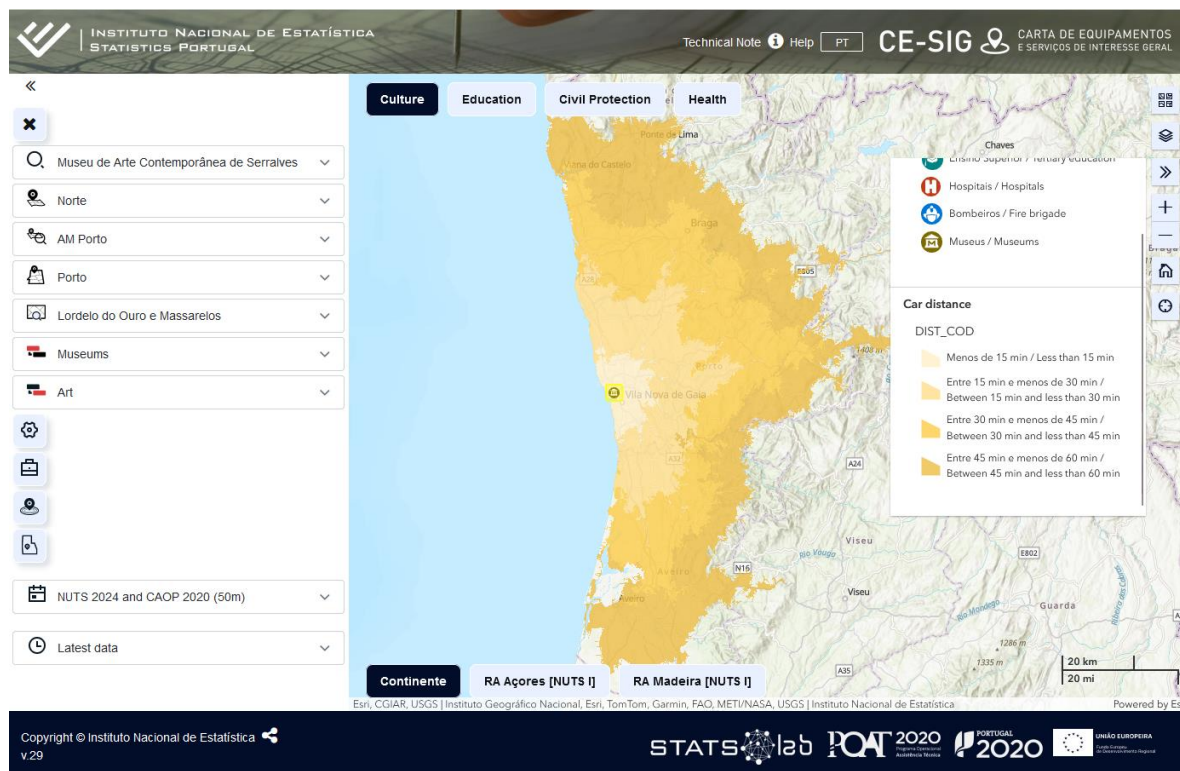
Equipment: Museu de Arte Contemporânea de Serralves		
Museums		
Art		
FOOT SERVICE AREA: Between 10 min and less than 15 min		
Context indicators - museums		
Resident population in the equipment service area (No.)	2023	13 608 Mi
Area in the equipment service area (km ²)	2023	1,87 Mi
Population's density in the equipment service area (No./ km ²)	2023	7 267,82 Mi
Private households in the equipment service area (No.)	2023	5 424 Mi
Housing units in the equipment service area (No.)	2023	6 217 Mi
Buildings in the equipment service area (No.)	2023	1 247 Mi

Exportation date: 2025-06-17 10:26:19

Source: Statistics Portugal, Map on Facilities and Services of General Interest (CE-SIG)

It is possible to search the service area by driving time for the facility in question, which also presents four time ranges [Fig. 8], and the information box for the selected driving time (in this case, from 15 to 30 minutes) [Fig. 9].

Figure 8. Driving time service area (min) for the Museu de Arte Contemporânea de Serralves



Source: Statistics Portugal, Map on Facilities and Services of General Interest (CE-SIG)

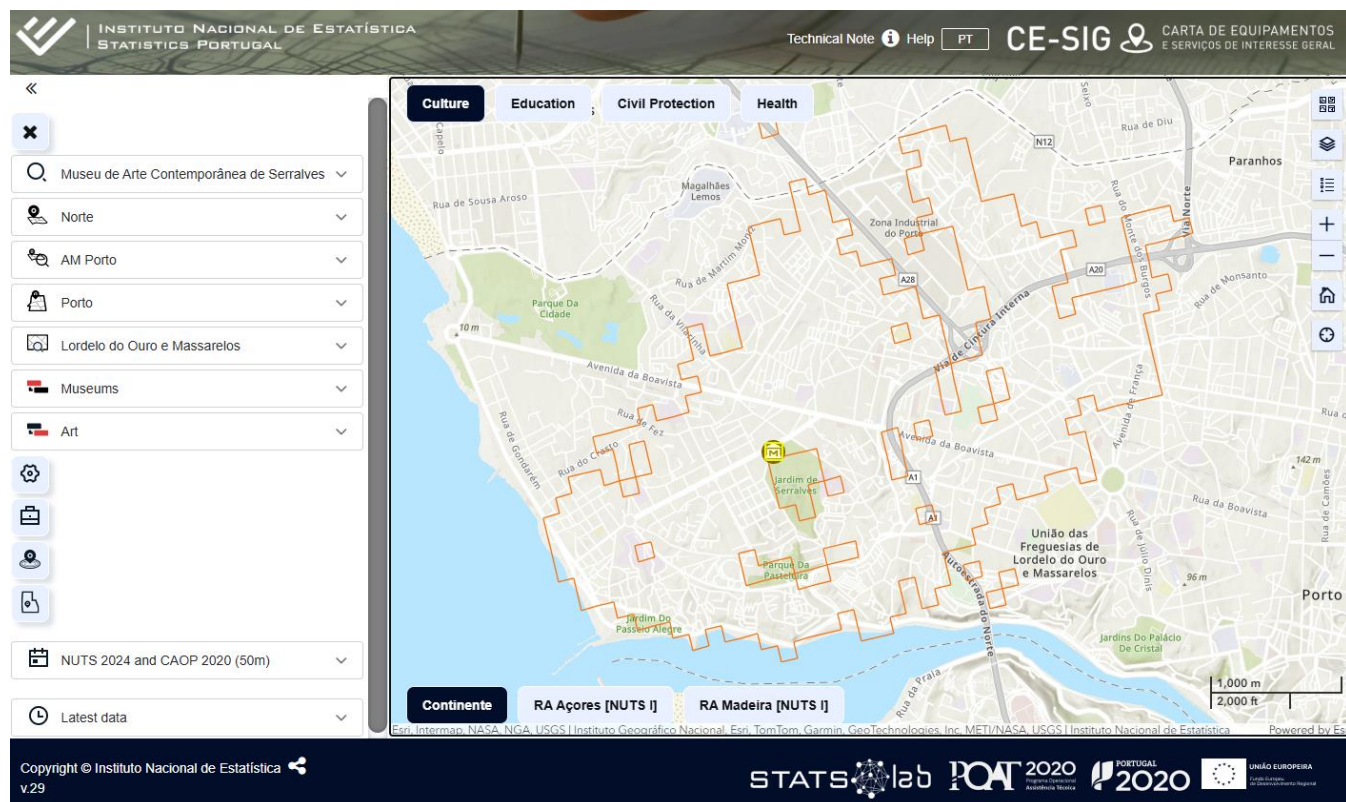
Figure 9. Driving time service area box (between 15 min and less than 30 min) for the Museu de Arte Contemporânea de Serralves

Equipment: Museu de Arte Contemporânea de Serralves		
Museums		
Art		
LIGHT CAR SERVICE AREA: Between 15 min and less than 30 min		
Context indicators - museums		
Resident population in the equipment service area (No.)	2023	894 220 Mi
Area in the equipment service area (km ²)	2023	1 206,29 Mi
Population's density in the equipment service area (No./ km ²)	2023	741,30 Mi
Private households in the equipment service area (No.)	2023	330 871 Mi
Housing units in the equipment service area (No.)	2023	408 159 Mi
Buildings in the equipment service area (No.)	2023	253 030 Mi
Exportation date: 2025-06-17 10:27:33		

Source: Statistics Portugal, Map on Facilities and Services of General Interest (CE-SIG)

In addition to the service areas, around the facility, it is also possible to consult the **Potential Catchment Area** [Fig. 10] and the respective information box [Fig. 11].

Figure 10. Potential catchment area for the Museu de Arte Contemporânea de Serralves



Source: Statistics Portugal, Map on Facilities and Services of General Interest (CE-SIG)

Figure 11. Potencial catchment area box for the Museu de Arte Contemporânea de Serralves

Equipment: Museu de Arte Contemporânea de Serralves			
Museums			
Art			
POTENTIAL CATCHMENT AREA:			
Context indicators - museums			
Resident population in the equipment potential catchment area (No.)	2023	75 316	Mi
Area in the equipment potential catchment area (km²)	2023	9,02	Mi
Population's density in the equipment potential catchment area (No./ km²)	2023	8 353,94	Mi
Private households in the equipment potential catchment area (No.)	2023	31 312	Mi
Housing units in the equipment potential catchment area (No.)	2023	37 126	Mi
Buildings in the equipment potential catchment area (No.)	2023	9 560	Mi
Exportation date: 2025-06-17 16:21:13			

Source: Statistics Portugal, Map on Facilities and Services of General Interest (CE-SIG)

BOX: EXAMPLE OF INFORMATION AVAILABLE ON THE POPULATION'S ACCESSIBILITY TO HOSPITAL ESTABLISHMENTS

In 2022, in Portugal, the median time for residents to reach the nearest hospital² by car was 10.9 minutes. At the sub-regional level, this value varied between 6.3 minutes in Grande Lisboa and 35.3 minutes in Alentejo Litoral.

The municipal portrait of the median access time by car of the resident population to the nearest establishment revealed shorter access times in the municipalities of the North-Central Coastal strip of Continente, particularly in the metropolitan areas of Lisboa (sub-regions of Grande Lisboa and Península de Setúbal) and Porto, and also in the municipalities of the coastal strip of the Algarve. In contrast, the municipalities of the Interior of the Mainland and Alentejo presented, in general, longer access times.

In 2022, in 125 municipalities (42% of the 297 municipalities with available information³), the resident population accessed the nearest hospital in less than 15 minutes using a light vehicle. On the contrary, in 10% of municipalities (29 municipalities), the median access time was more than 45 minutes.

Península de Setúbal was the sub-region where the smallest difference was found between municipalities in the median time taken to access the nearest hospital by car (9.8 minutes): the shortest time was recorded in Barreiro (4.8 minutes) and the longest in Seixal (14.6 minutes). In 2022, Baixo Alentejo recorded the greatest disparity between municipalities in terms of the time taken to access the nearest hospital by car (82.8 minutes) [Fig. 12].

² Hospital establishments are considered to be of a public and private institutional nature.

³ For the municipalities of Vila do Porto, Santa Cruz da Graciosa, Calheta, Velas, Lajes do Pico, Madalena, São Roque do Pico, Lajes das Flores, Santa Cruz das Flores and Corvo, in the Região Autónoma dos Açores, and Porto Santo, in the Região Autónoma da Madeira, it is not possible to calculate this indicator due to the lack of hospital establishments accessible by car.

Figure 12. Median access time by light car of the resident population to the nearest hospital establishment (minutes), Portugal, NUTS III and municipality, 2022

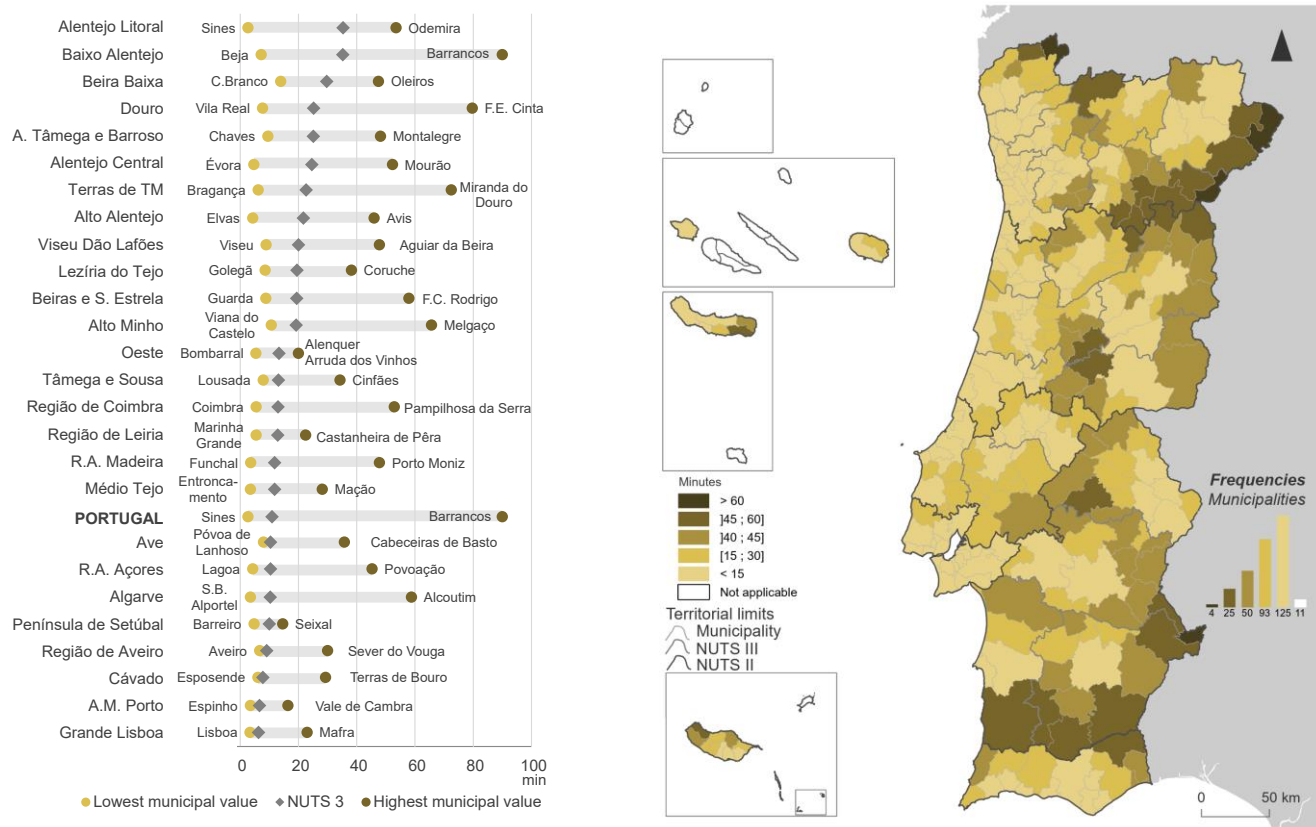


Figure 13. Median, 1st and 3rd quartiles of access time by light car of the resident population to the nearest hospital establishment (minutes), Portugal, NUTS III, 2022

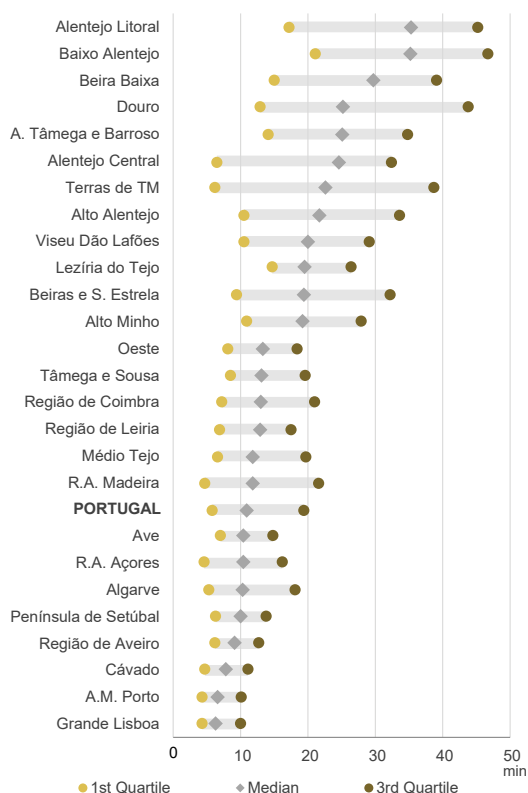


Figure 13 represents the median and the 1st and 3rd quartiles – values corresponding to the position of the first quarter and the third quarter of the ordered data set – of the time taken by the resident population to access the nearest hospital by car.

In 2022, 25% of the resident population with the shortest time to access the nearest hospital took up to 5.8 minutes (1st quartile) and 25% of the population with the longest time accessed it in 19.4 minutes or more (3rd quartile).

At the sub-regional level, the value of the 1st quartile varied between 4.3 minutes in the Área Metropolitana do Porto and Grande Lisboa, and 21.1 minutes in Baixo Alentejo. The value of the 3rd quartile was also the highest in Baixo Alentejo (46.7 minutes) and the lowest in Grande Lisboa (10.0 minutes).

Terras de Trás-os-Montes and Douro presented the greatest differences, greater than 30 minutes, between the 3rd and 1st quartile of access time by light vehicle to the nearest hospital.

In 2022, the median access time by car for the resident population to the nearest hospital with emergency service was 12.7 minutes at the national level. In 105 municipalities (35.4% of all municipalities) this time was less than 15 minutes; in 104 municipalities (35%) it was between 15 and 30 minutes; in 57 municipalities (19.2%) the access time was 30 to 45 minutes; and in 31 municipalities (10.4%) this time exceeded 45 minutes.

Considering hospitals with maternity services, the median access time, by car, for the resident population to the nearest establishment was 14.4 minutes in 2022. This value varied between 7.9 minutes in the Área Metropolitana do Porto and 65.9 minutes on the Alentejo Litoral.

TECHNICAL NOTE

The territorial scope of the Map on Facilities and Services of General Interest (CE-SIG) tends to be national, promoting coordination with similar services of the Governments of the Autonomous Regions, benefiting from the framework of coordination between Statistics Portugal, the Regional Statistics Service of the Azores (SREA) and the Regional Statistics Directorate of Madeira (DREM).

CE-SIG uses a variety of information sources and is based on a model of inter-institutional coordination and bilateral coordination with external entities providing information at the facility level, benefiting from the channels existing at Statistics Portugal.

CE-SIG provides annual statistical indicators.

Geoprocessing methodological procedures were implemented, which are essential for the preparation of accessibility and demand geographies (service areas and catchment areas), taking into account the different types of facility and respective services.

MAIN CONCEPTS

Service of general interest: Service aiming to meet the essential needs and fundamental rights of citizens, based on the principles of solidarity and equal access, constituting a fundamental element in promoting economic, social, and territorial cohesion, as well as sustainable development. Whether economic or non-economic in nature, this service covers various areas such as education, health, culture, civil protection, social services, housing, justice, among others, being accessibility, quality, and cost important indicators for its assessment.

Geographical location: Reference point obtained from the intersection of geographic coordinates (latitude and longitude) defined under a reference coordinate system or from descriptive location information (addresses).

Service area: Geographic area of accessibility to facilities and respective services that represents a time interval (isochronous) or physical distance to such facilities and services.

Physical distance: Delimited service area based on linear (Euclidean) distance intervals to a facility.

Walking time: Delimited service area based on distance-time intervals (isochronous) to a facility, considering walking on the network of roads where this mode is allowed.

Light car driving time: Delimited service area based on distance-time intervals (isochronous) to a facility, considering the travel by light car on the network of roads where this mode is allowed.

Catchment area: Geographic area of facilities and respective services that reflect the potential, effective or normative (administrative) demand for such facilities/services.

Potential catchment area: Delimited catchment area based on criteria of economic rationality in the access to a certain type of facility or service in the shortest distance-time.



Effective catchment area: Delimited catchment area based on users' travelling patterns when accessing a particular type of facility or service.

Other sectoral concepts can be consulted in the [Statistics Portugal Metadata System](#).

For more information, see the [Technical Note](#).

ACKNOWLEDGEMENTS

Statistics Portugal would like to thank the Directorate-General for Education and Science Statistics (DGEEC), the National Emergency and Civil Protection Authority (ANEPC), the Central Administration of the Health System (ACSS) and all the entities that responded to Statistics Portugal requests for information, and whose data allowed the development of the CE-SIG application released today. Their participation made possible the public service that Statistics Portugal provides with this release.