



January 14th 2025

INDICES OF PRODUCTION, EMPLOYMENT AND WAGES IN CONSTRUCTION

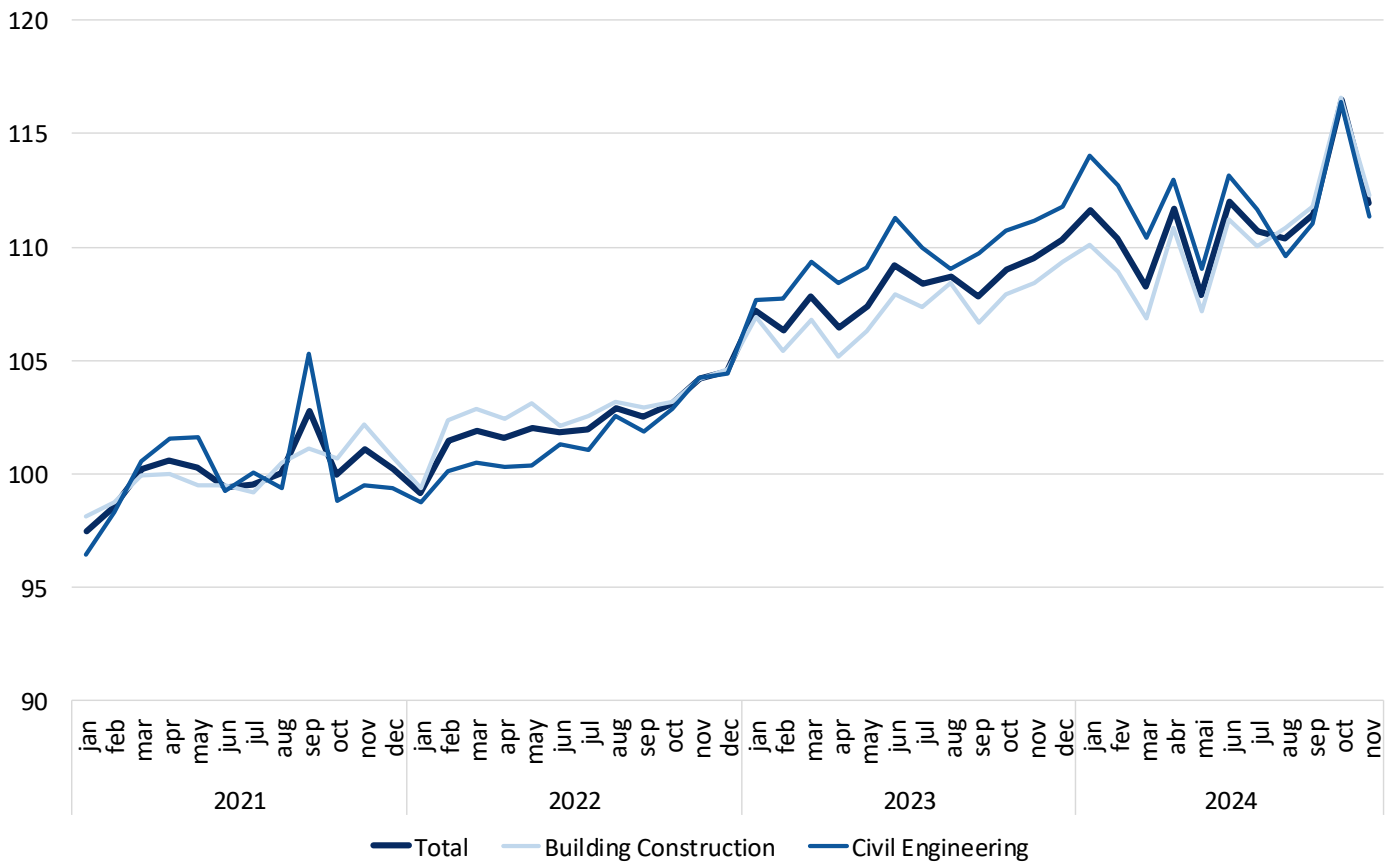
November 2024

PRODUCTION IN CONSTRUCTION GREW 4.1%

The Index of Production in Construction increased 4.1% in year-on-year terms (3-month moving average, working days and seasonally adjusted), up by 0.2 percentage points from October.

The employment indices slowed by 2.8% and wages increased by 12.0% in November (3.2% and 11.2% in the previous month, respectively).

Figure 1. Indices of Production in Construction (2021=100)



Next press release – February 11th 2025