



August 14th 2024

INDICES OF PRODUCTION, EMPLOYMENT AND WAGES IN CONSTRUCTION

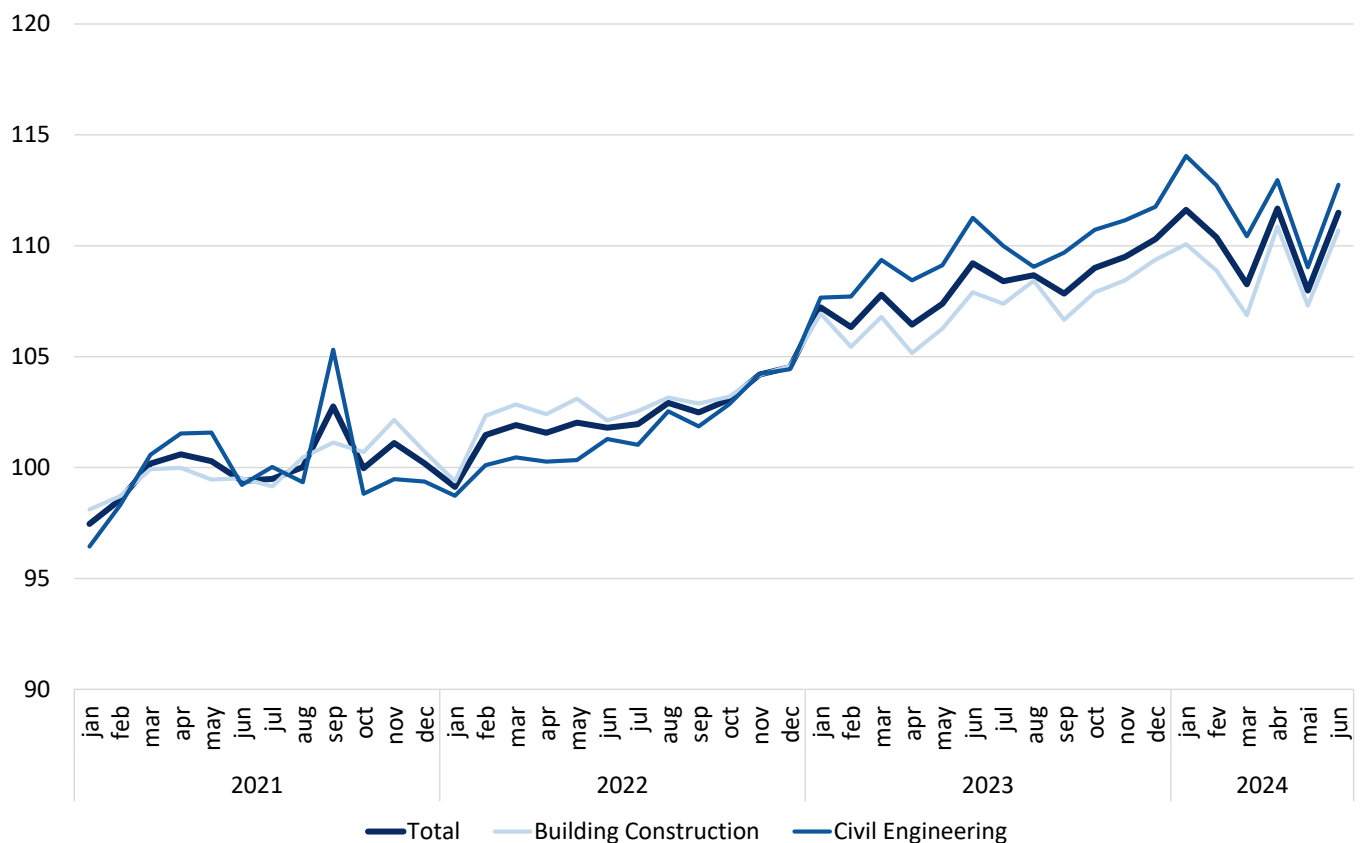
June 2024

PRODUCTION IN CONSTRUCTION GREW 2.5%

The Index of Production in Construction increased 2.5% in year-on-year terms (3-month moving average, working days and seasonally adjusted) in June, up by 0.5 percentage points from May.

The employment and wages indices rose 2.2% and 8.4% in June, respectively (2.4% and 9.3% in the previous month).

Figure 1. Indices of Production in Construction (2021=100)



Next press release – September 12th 2024