

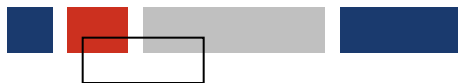


INSTITUTO NACIONAL DE ESTATÍSTICA
STATISTICS PORTUGAL

Great Expectations



Instituto Nacional de Estatística
Departamento de Metodologia e Sistemas de Informação
Serviço de Infraestrutura Informacional
Sónia Quaresma



April 2011 • INE • Portugal



GREAT
EXPECTATIONS

GREAT
EXPECTATIONS



















20

21

22 TUESDAY

23 WEDNESDAY

24 THURSDAY

25

26 SATURDAY

27 SUNDAY

MEETING

PROJECTS

EXPENSES

GOALS

NOTES



Mátyás templom



MONUMENT

Halászbástya



MONUMENT

Royal Palace



MONUMENT



MONUMENT



Citadell







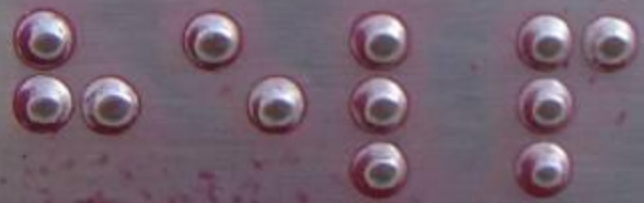


**DEAD
END**



**CHANGE
AHEAD**

HELP



CALL RECEIVED W



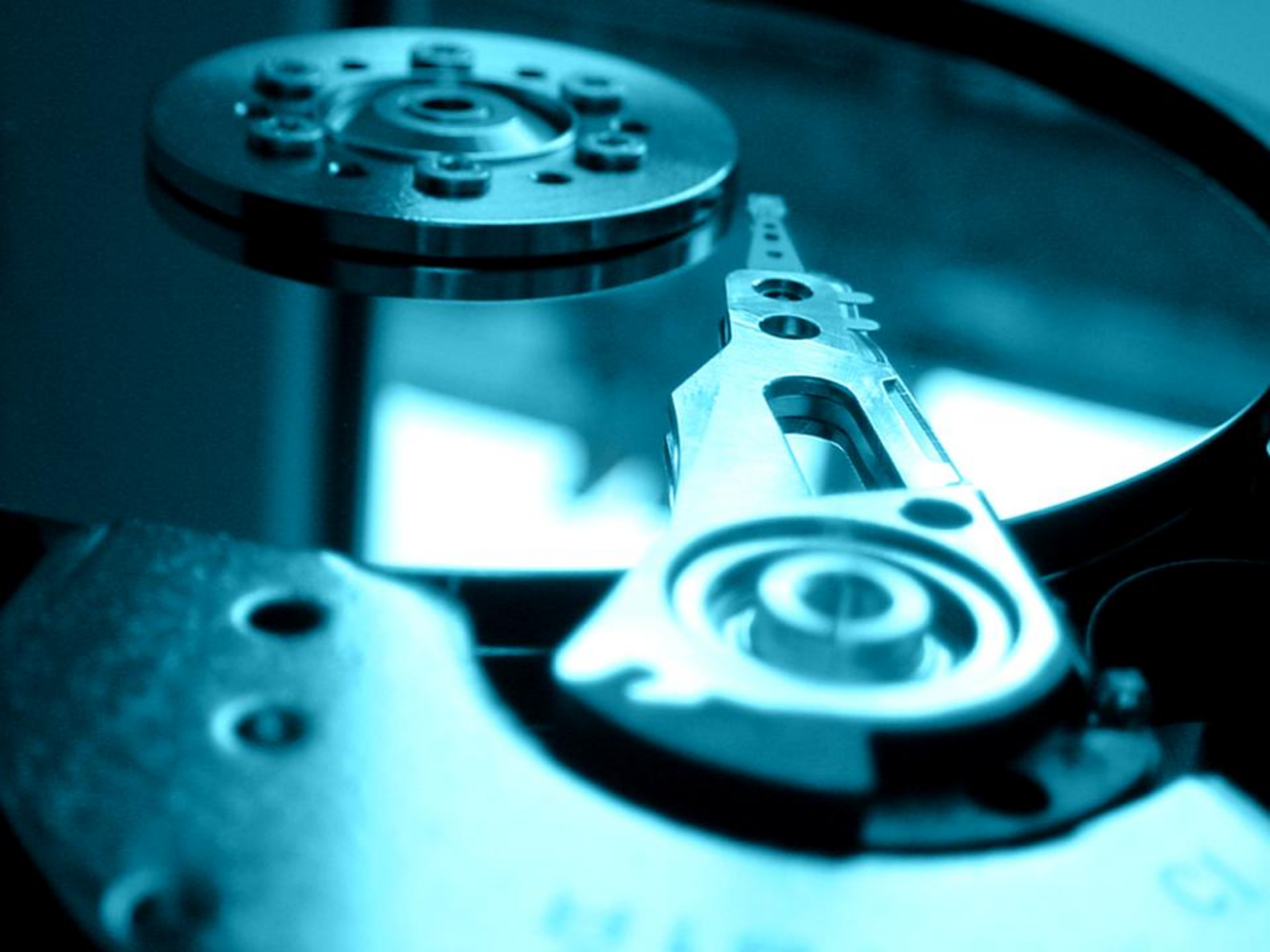


GREAT
EXPECTATIONS

HOW OUR DW
WAS BORN

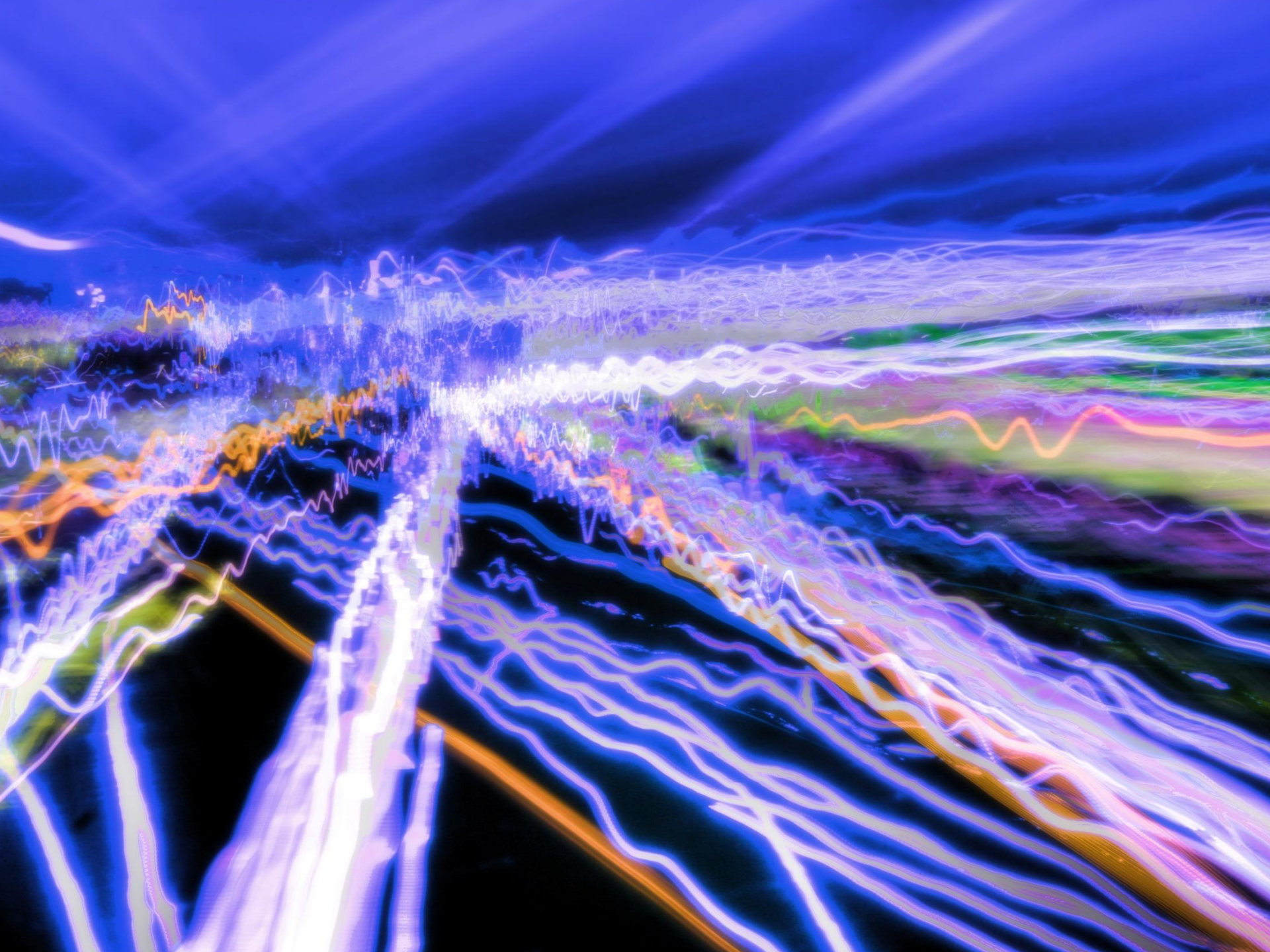






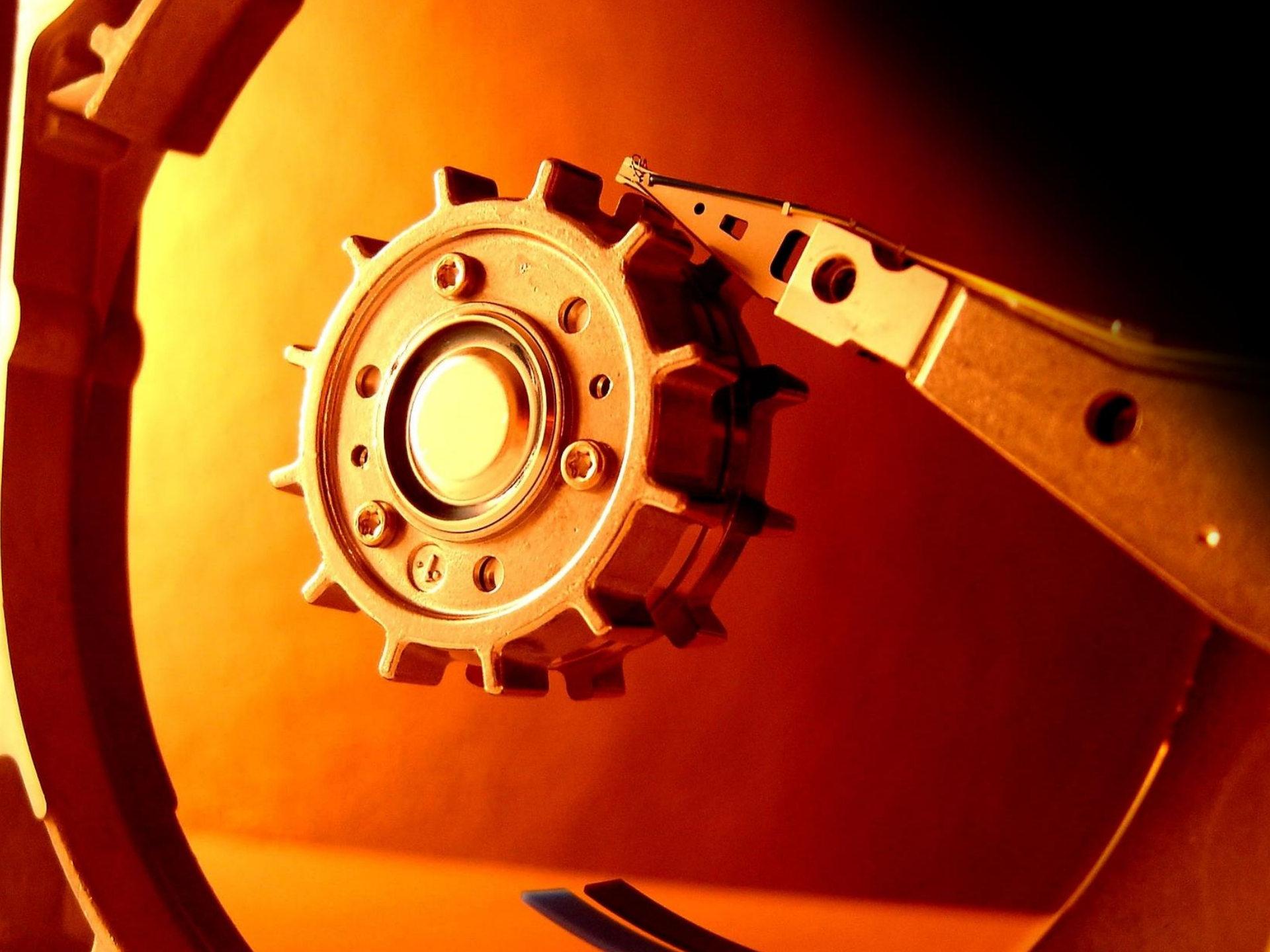












MONDAY

TUESDAY

WEDNESDAY

THURSDAY

6

5

13

12

20

19

27

26

4

11

18

25

3

10

17

24

31

2

9

16

23

30

1

8

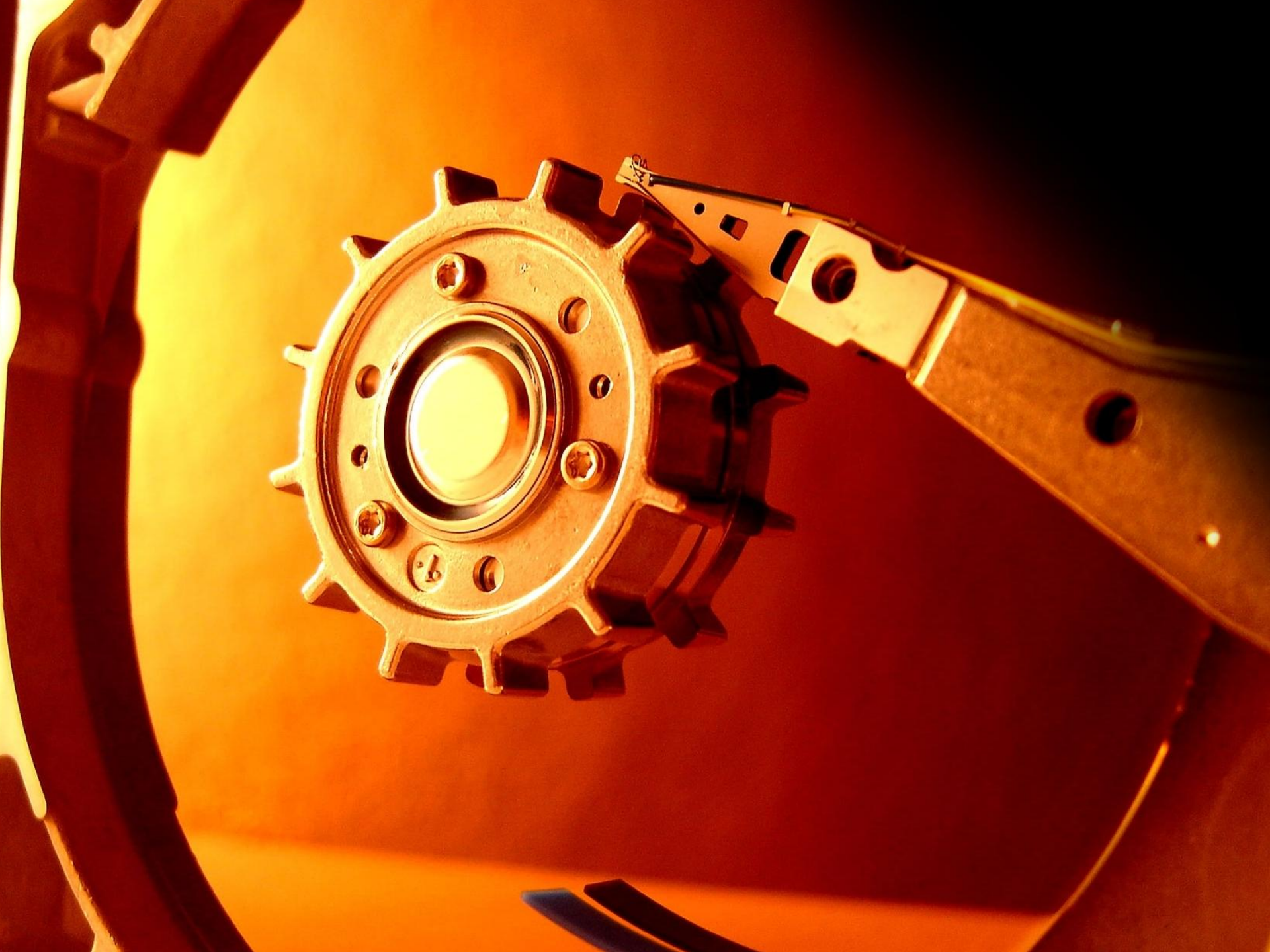
15

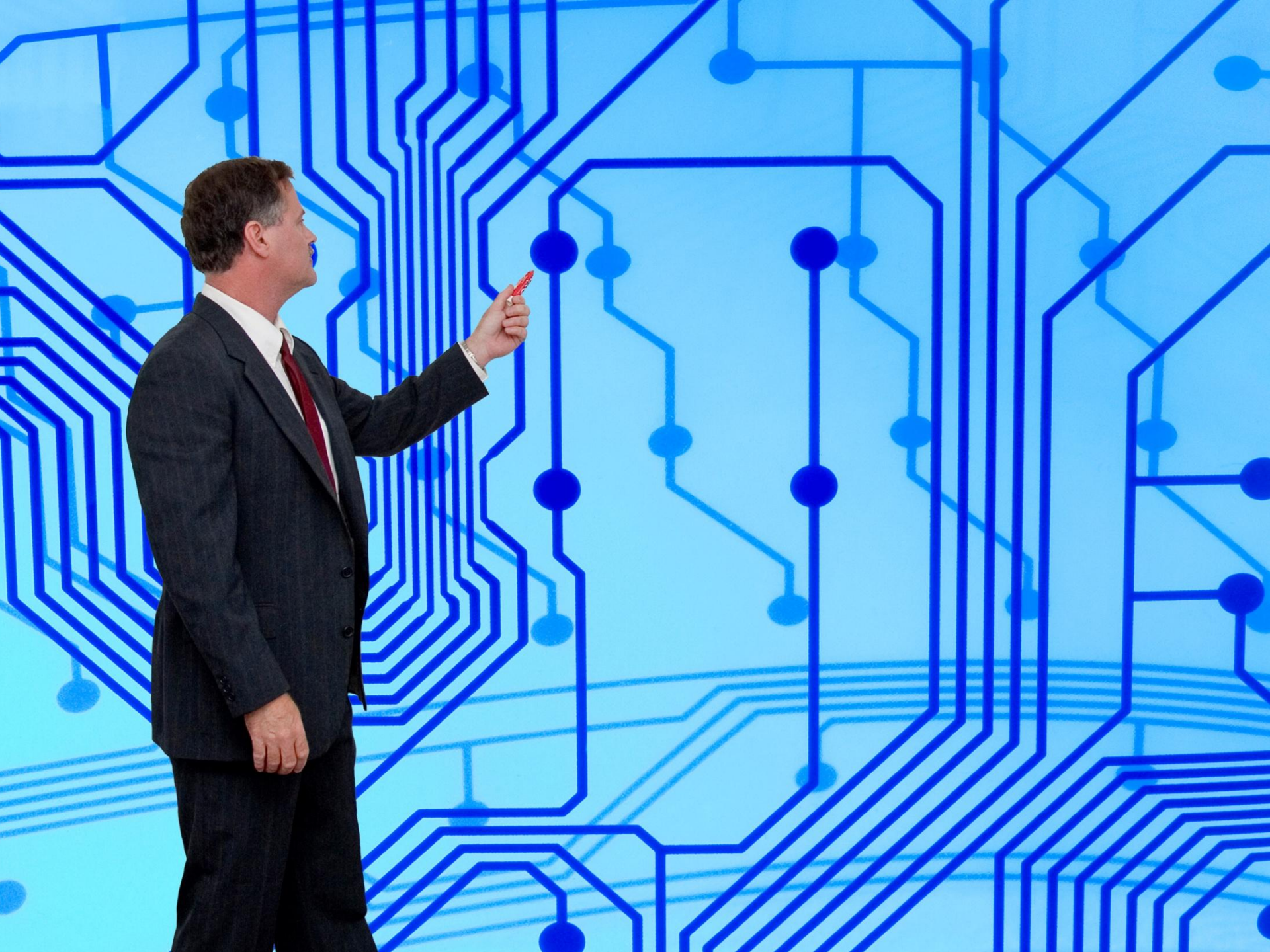
22

29









Getting Satisfactory Response Times





Dealing with Multiple Sources



Module 9

Polyatomic Ions

Polyatomic Ions - Ions

Ion Name	Formula	Charge
Ammonium	NH_4^+	+
Hydroxide	OH^-	-
Chlorate	ClO_3^-	-
Chlorite	ClO_2^-	-
Nitrate	NO_3^-	-
Nitrite	NO_2^-	-
Acetate	$\text{C}_2\text{H}_3\text{O}_2^-$	-



double bonds)

Molec



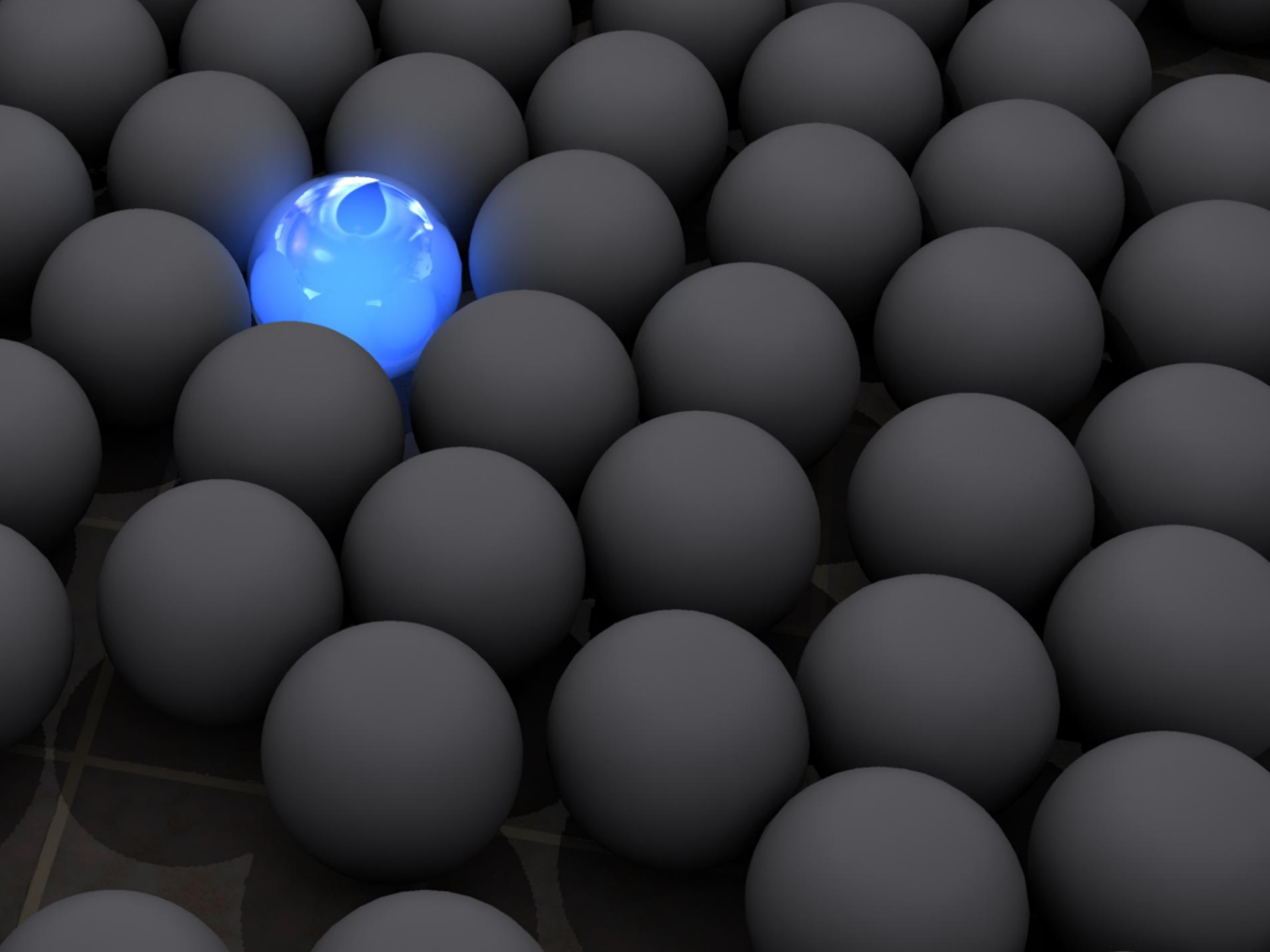
Integrating means
Sharing Dimensions

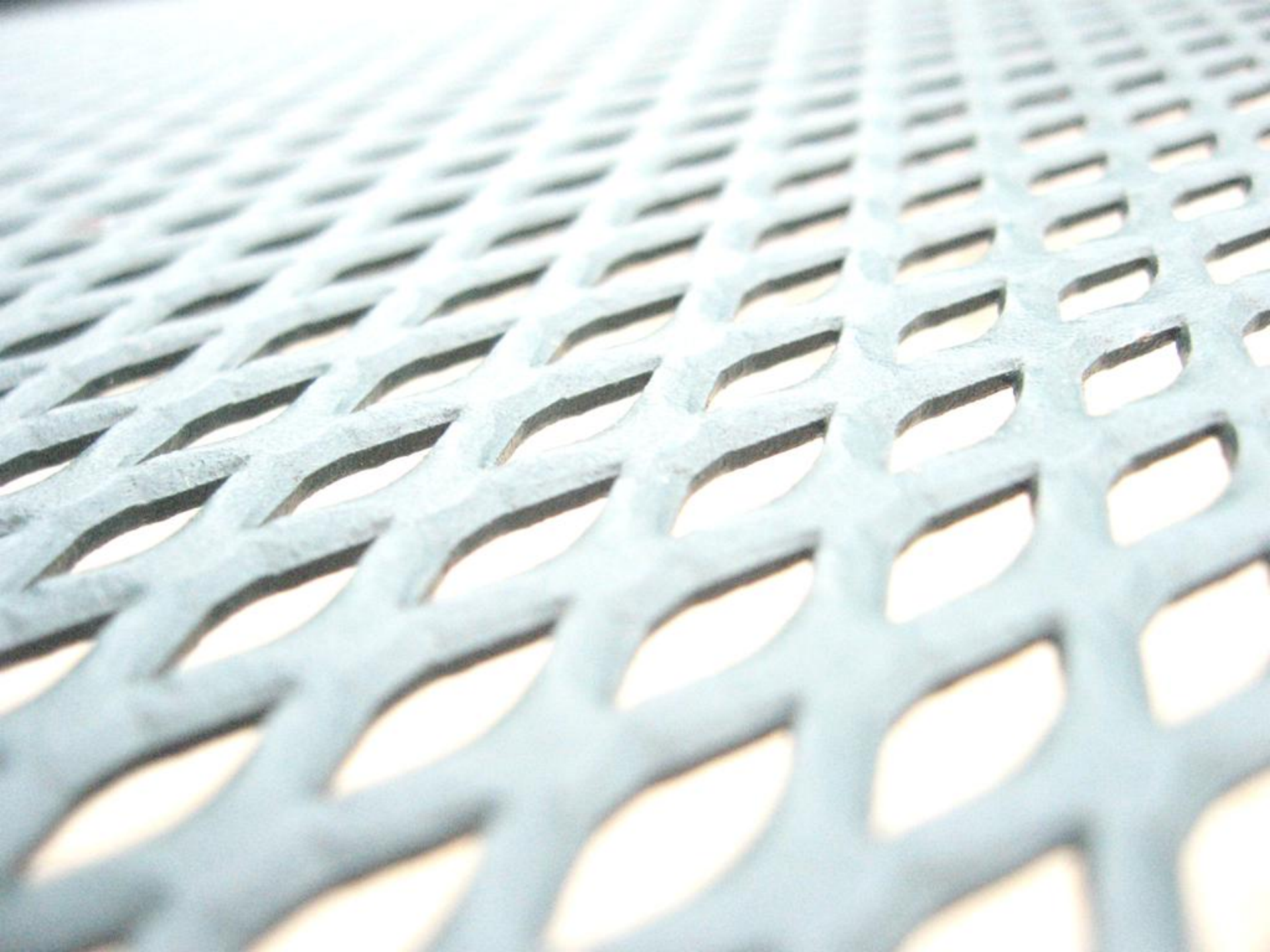






Out of Range







Langenscheidt

German

L

Langenscheidt

Spanish

L

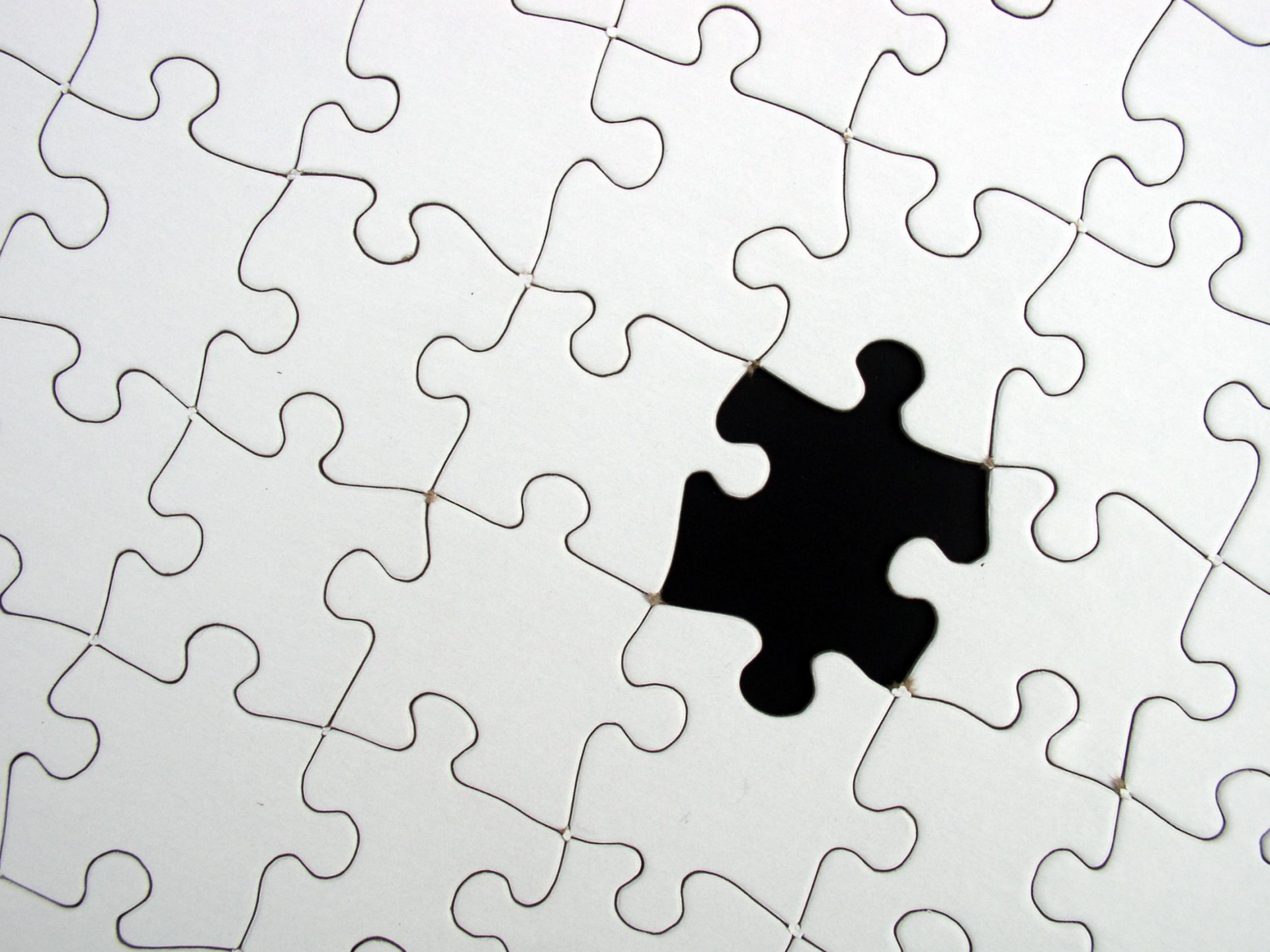
ITALIAN



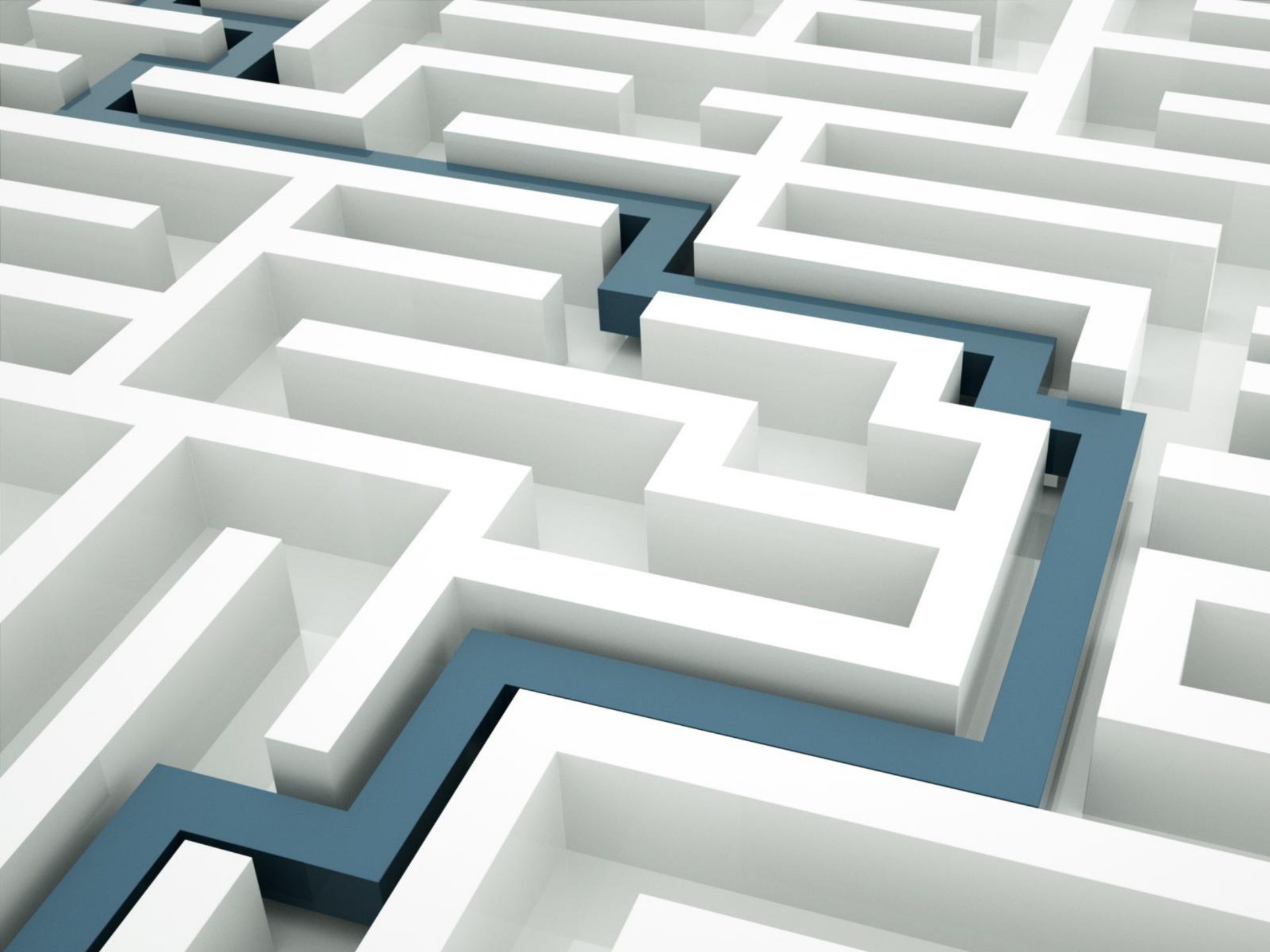
ITALIANO



Values Absence









Label with illegible text.

Label with illegible text.

Label with illegible text.

Label with illegible text.

Label with illegible text.

Label with illegible text.

COLOMBI
1 kg e 500g

SAZ DI MARI
1 kg e 500g

ORZAI
1 kg e 500g

ANANCIANO
1 kg e 500g

INSALTA
1 kg e 500g

CINQ PARFUMS
1 kg e 500g

FANSONI
1 kg e 500g

Incomplete and Ragged Dimensions











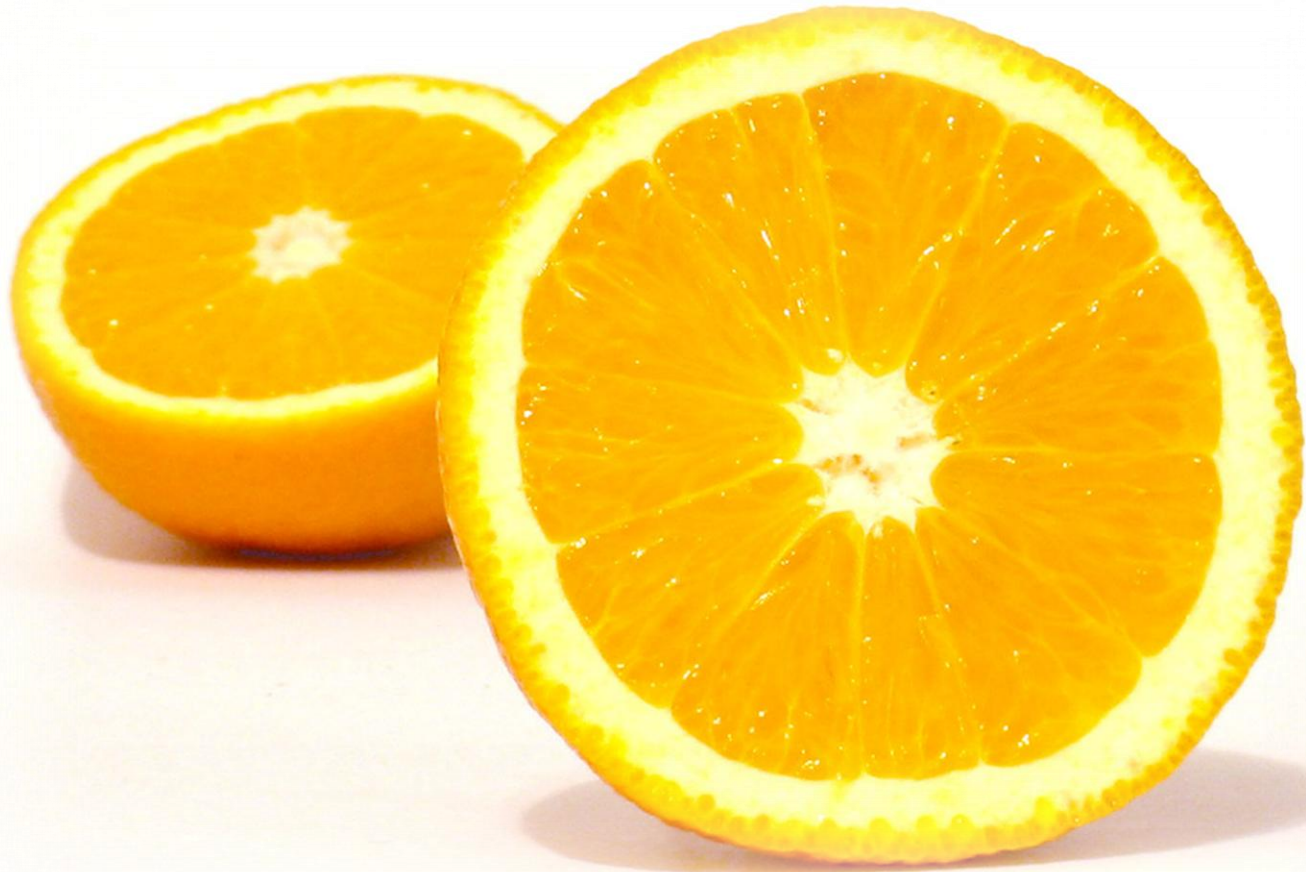
Unbalanced Classifications





Multiple Hierarchies









Old Information



guerrilla

guer.ril.la [gɛ'ri:lɔ] s. + adj. guerrilha
 f., guerrilheiro m.
 guess [gɛs] s. suposição f. | v. adivinhar
 guest [gɛst] s. hóspede, convidado m.
 guff [gʌf] s. bobagem, tolice f.
 guid.ance [gʌɪdəns] s. orientação f., di-
 reção f. | for your = para seu governo
 guide [gʌɪd] s. guia m. | v. guiar, gover-
 nar
 guide.line [gʌɪdli:n] s. diretriz f.
 guild [gʌɪld] s. grêmio m.
 guile [gʌɪl] s. astúcia f., logro m.
 guilt [gʌɪlt] s. culpa, culpabilidade f.
 guilt.y [gʌɪlti] adj. culpado
 guitar [gɪ'tɑ:ə] s. guitarra f., violão m.
 gulf [gʌlf] s. golfo m., baía f. | v. de-
 vorar
 gull [gʌl] s. gaivota f.
 gul.let [gʌlɪt] s. garganta, goela f.
 gully [gʌli] s. buco m., sarjeta f.
 gulp [gʌp] v. tragar, engolir | al one =
 de um gole
 gum [gʌm] s. goma f.; cola f. (E.U.A.)
 gummy f. de mascar, gengiva f. | v. en-
 gomar; colar

H

hab.it [hæbɪt] s. roupa f., traje, hábi-
 to m. | v. habitar; acostumar; vici-
 ar
 ha.bit.ual [hæbɪtʃʊəl] adj. hábitual
 miliar
 hack [hæk] s. corte m. | v. cortar
 talhar
 hack.neyed [hæknɪd] s. velho, usado
 had [hæd] v. pret. de have
 hag.gard [hægɑ:d] s. jardão, jardim
 rado
 hag.gle [hægl] s. grama f.
 hail [heɪl] s. granizo m. | v. saudar, ad-
 orar
 hail.stone [hɛɪlstəʊn] s. pedra f. de granizo
 hair [heə] s. cabelo m. | v. cortar
 escova para cabelo
 penteado de cabelo
 riplante, horn
 hair.cut [heəkʌt] s. corte de cabelo
 hair



ham [hæm] s. presunto, pernil
 xa f.; barriga f. da perna
 ham.burg.er [hæmbɜ:ɡə] s. hambú-
 guer m.
 ham.mer [hæmə] s. martelo m. | v. ma-
 rtielar
 ham.mock [hæmɒk] s. rede f. para
 dormir; maca f.
 ham.per [hæmpə] s. cesta f. (com tam-
 pa). | v. impedir, dificultar
 hand [hænd] s. mão f. | v. dianteira
 ra; ponteiro m. de relógio | v. da-
 transmitir. at = perto, à mão | to
 a = ajudar. ne = at = à mão
 shake = s da

hand.cup [hændkʌp] s. xícara f.
 hand.ful [hændfʊl] s. cheio, abun-
 dante
 hand.icap [hændɪkəp] s. desvantagem ou
 obstáculo m.





Shifting the Organization Perspective





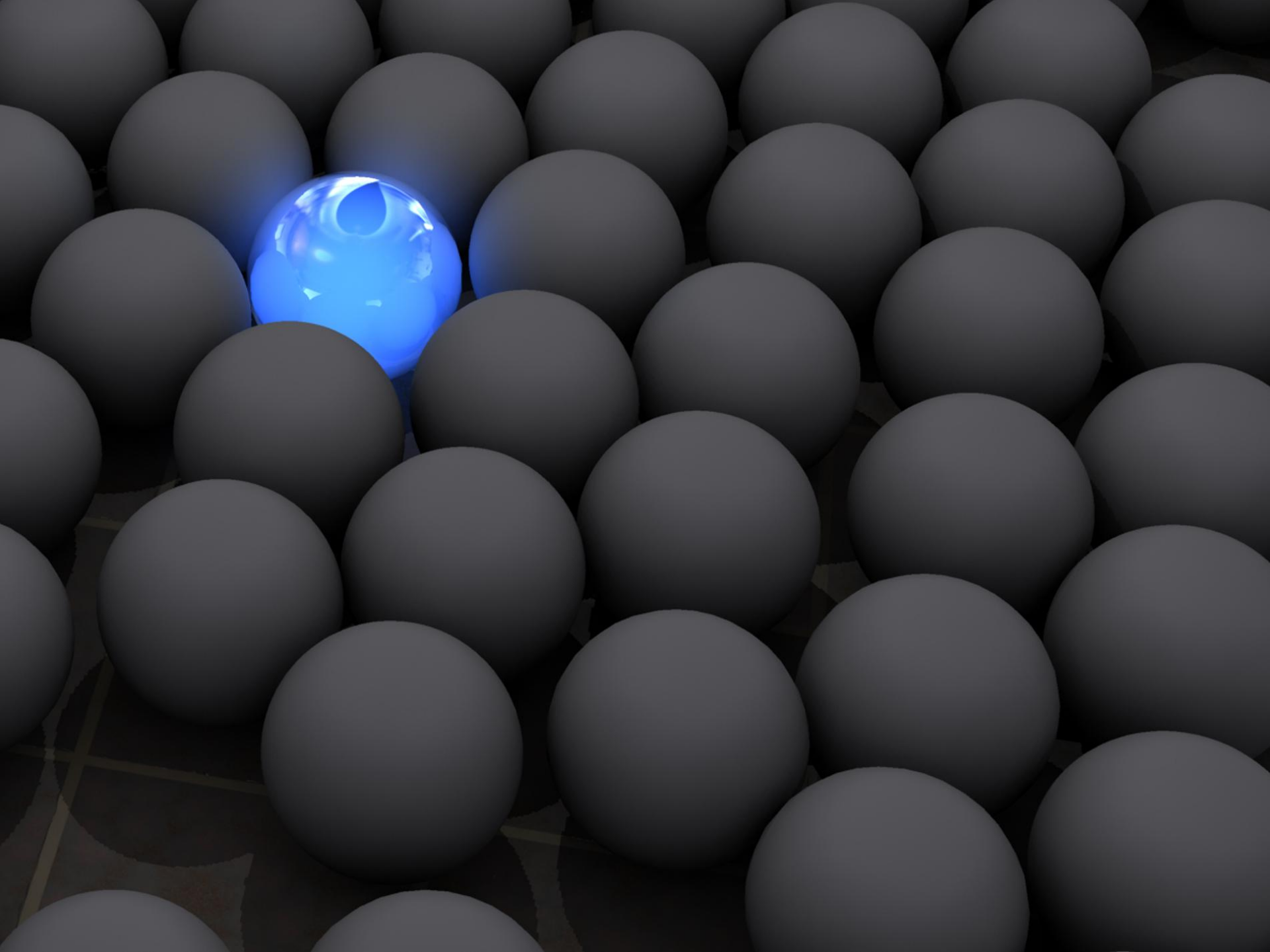


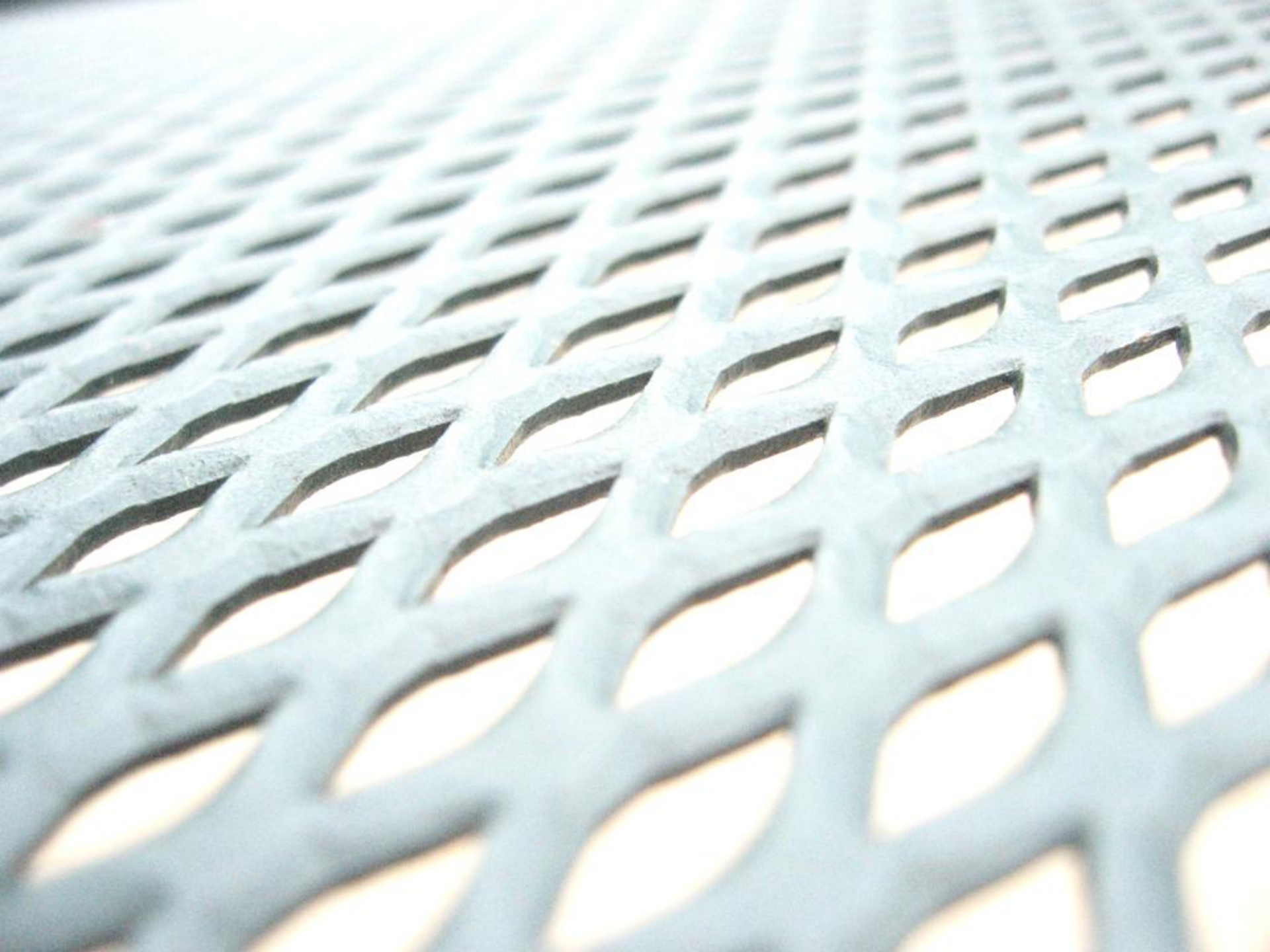


This is what
we've been
DOING

But is it
RIGHT?









Langenscheidt

German

L

Langenscheidt

Spanish

L

ITALIAN



ITALIANO



































**CHANGE
AHEAD**













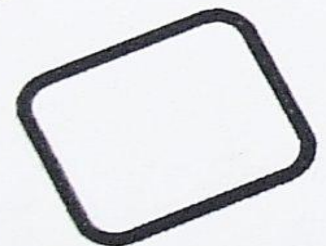
ABOUT THE QUESTIONNAIRE



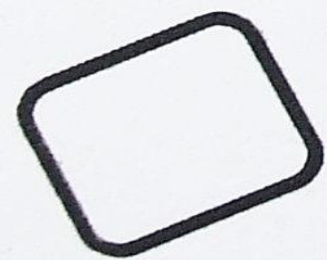
Excellent



Very good



Good



Average



Poor

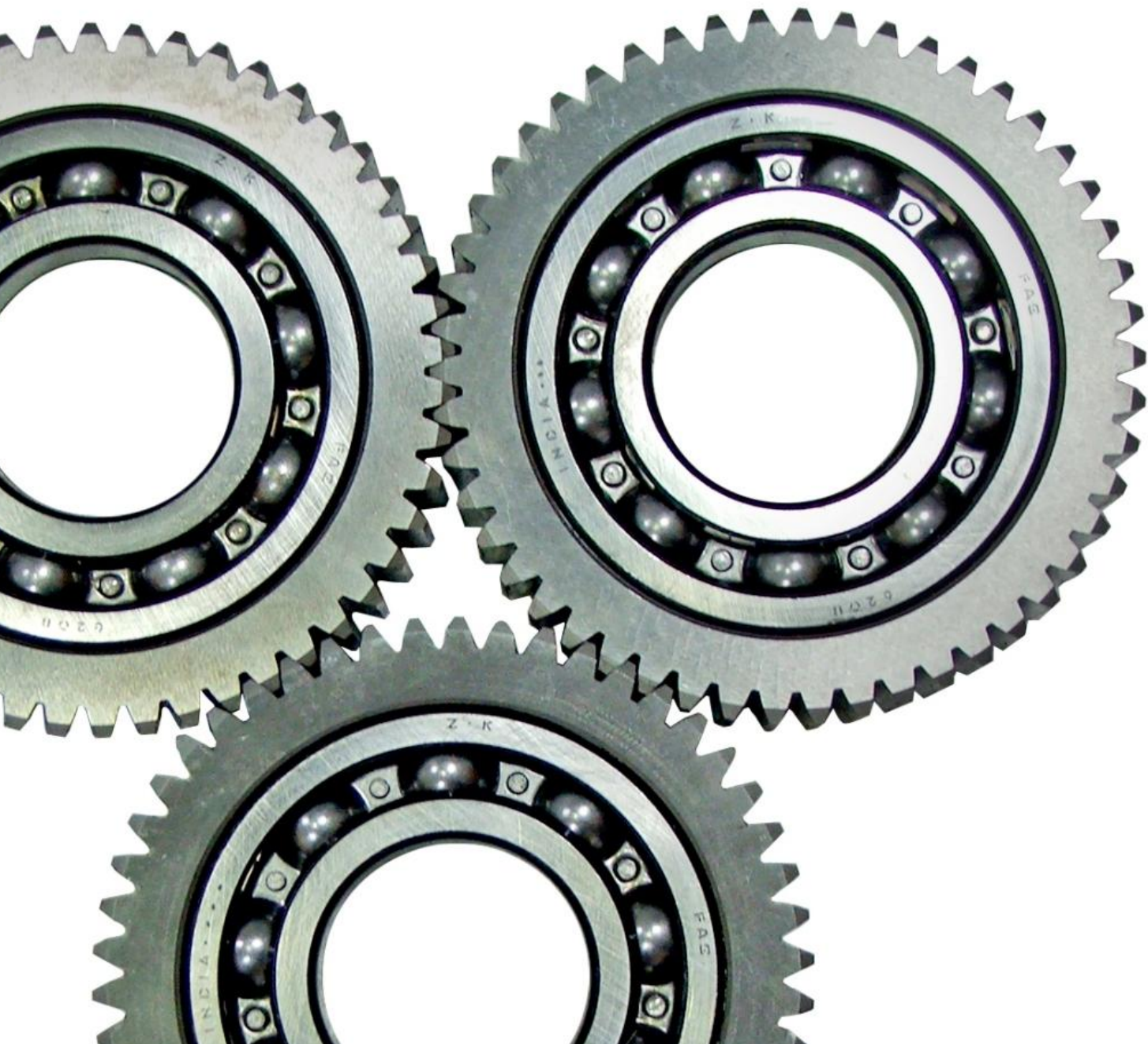


UNITED COLORS
OF BENETTON



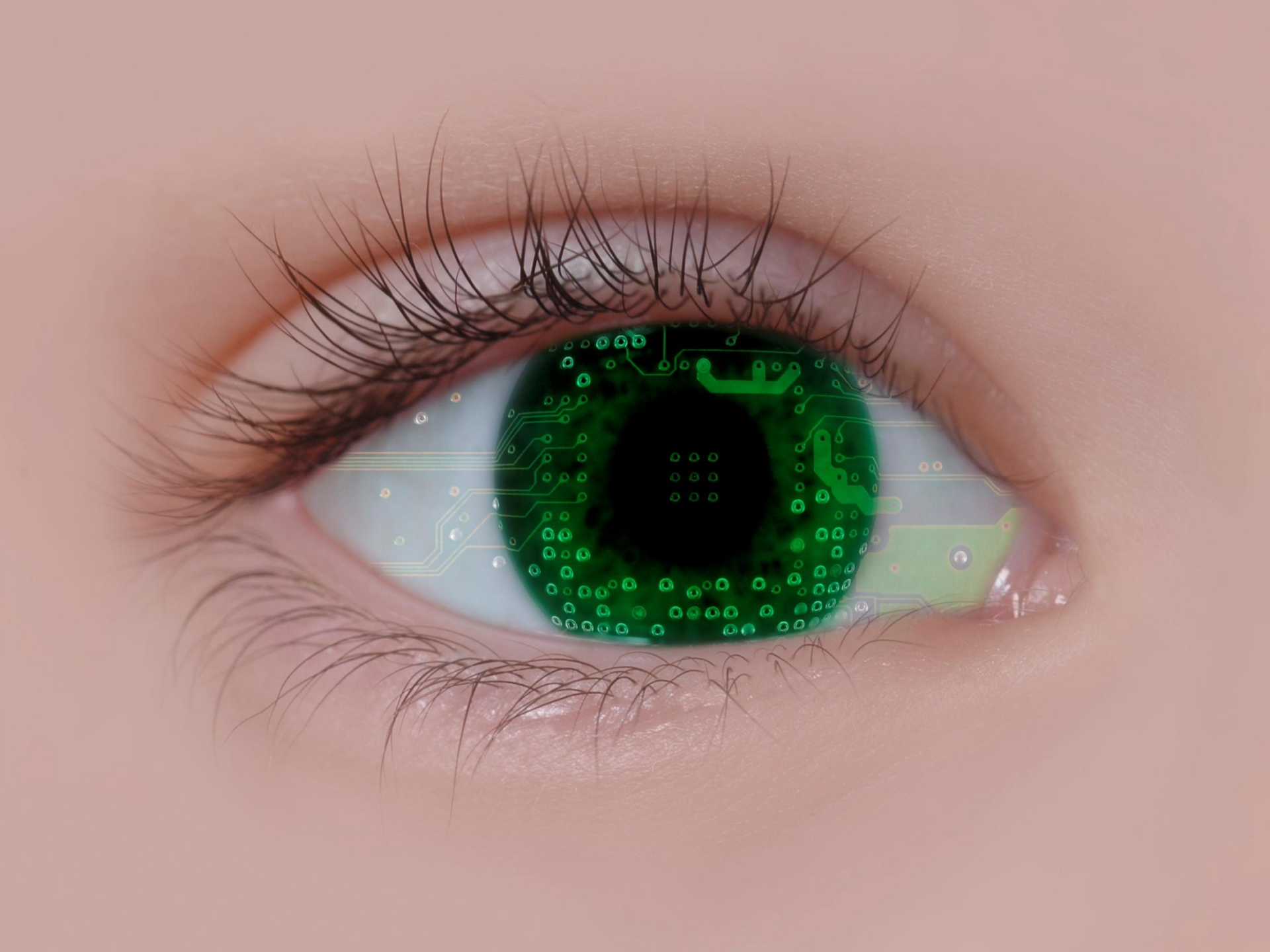


































bigevil600 @
sxc.hu



eostas @ sxc.hu