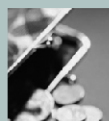




INSTITUTO NACIONAL DE ESTATÍSTICA
STATISTICS PORTUGAL



ECONOMIC ACTIVITY 2015



GDP
GROSS DOMESTIC PRODUCT

179 540
Million Euro

INCREASED
1,6%
IN VOLUME
than in 2014

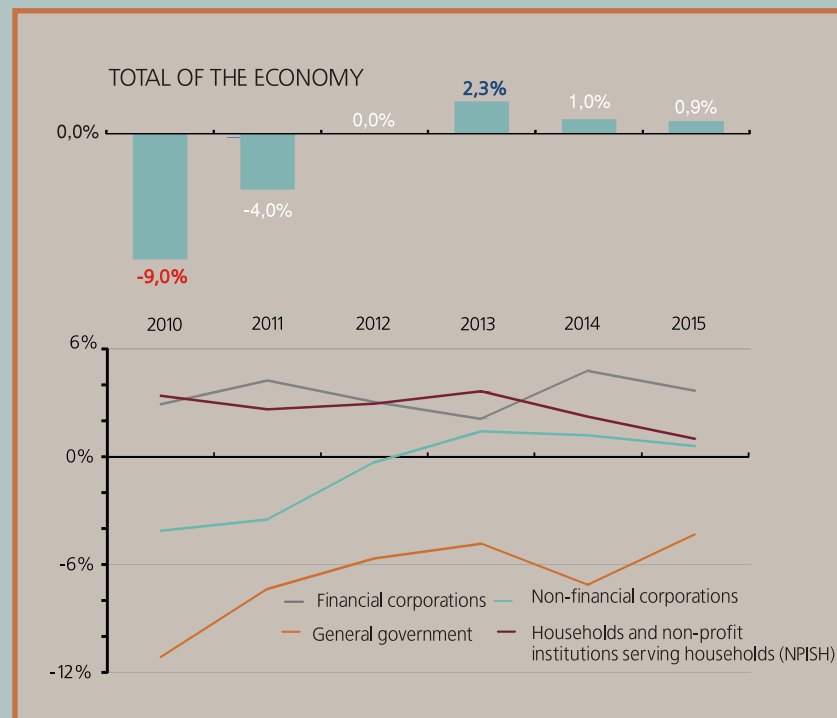
PER CAPITA
€ 17 333
4,2%
than in 2014

GFCF


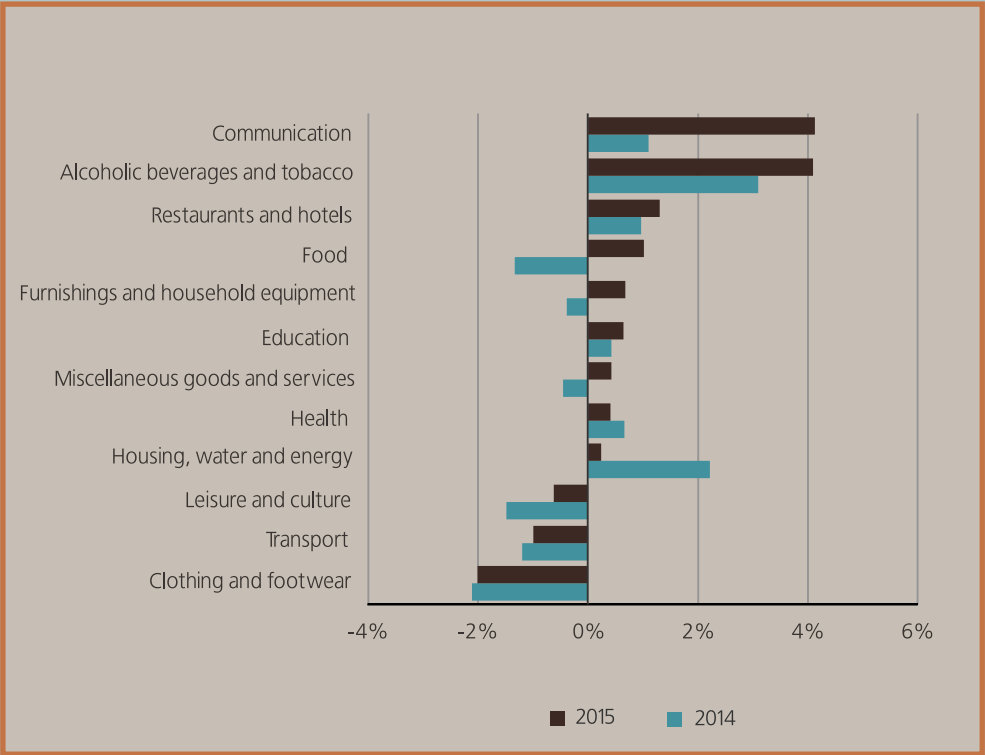
27 417
Million Euro

5,5%
than in 2014

Net lending (+) / Borrowing (-) of the national economy, in percentage of GDP



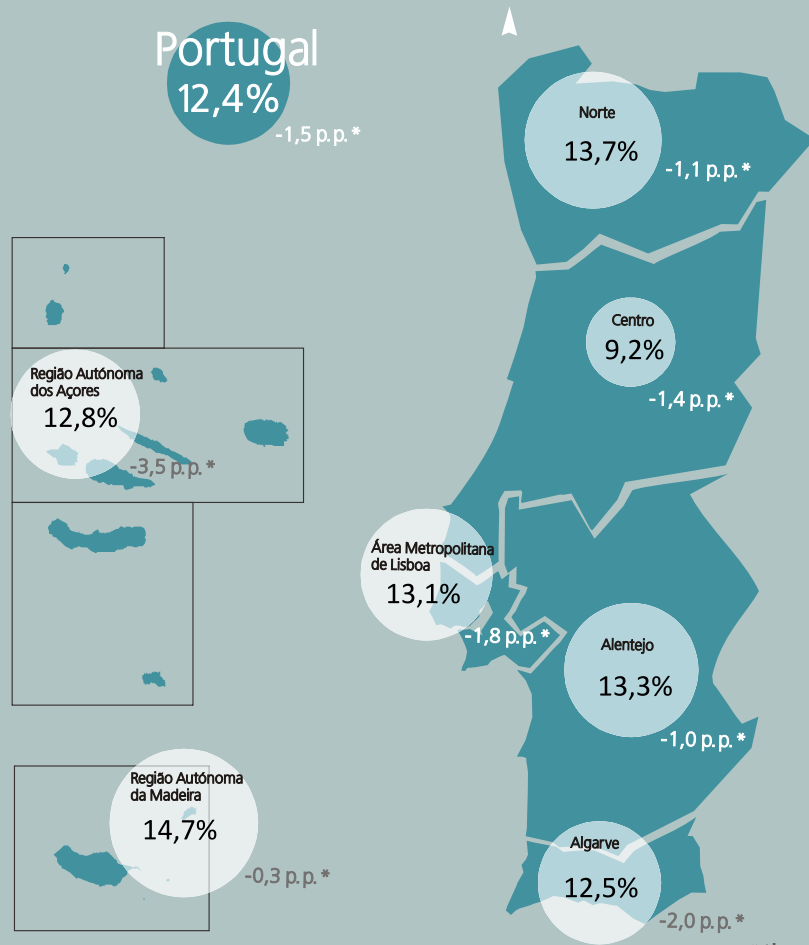
Inflation rate by classes of expenditure, 2015



INFLATION RATE
CONSUMER PRICE INDEX

AVERAGE GROWTH RATE
+0,5% ▶ +0,8 p. p.
than in 2014

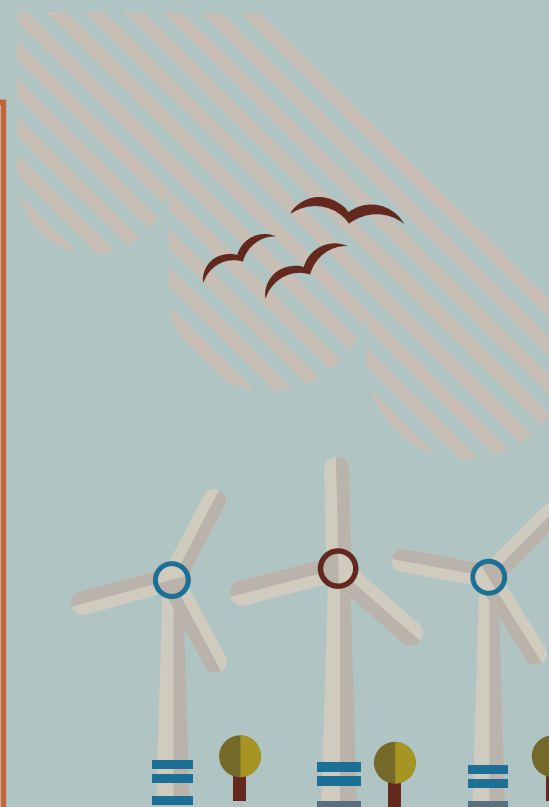
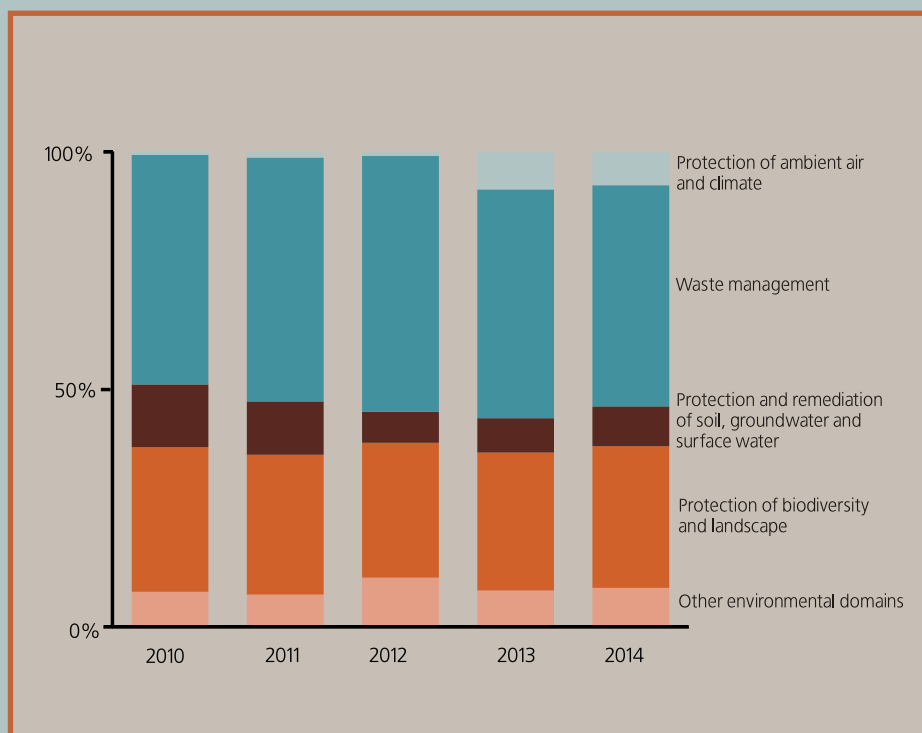
UNEMPLOYMENT RATE



*than in 2014



Environmental expenditure of public administrations, by environmental domains





370 225
NON FINANCIAL
COMPANIES ▲ 1,9%
than in 2014



2 688 923
PERSONS EMPLOYED

▲ 3,5%
than in 2014

☺ = 500 thousand persons employed

TURNOVER

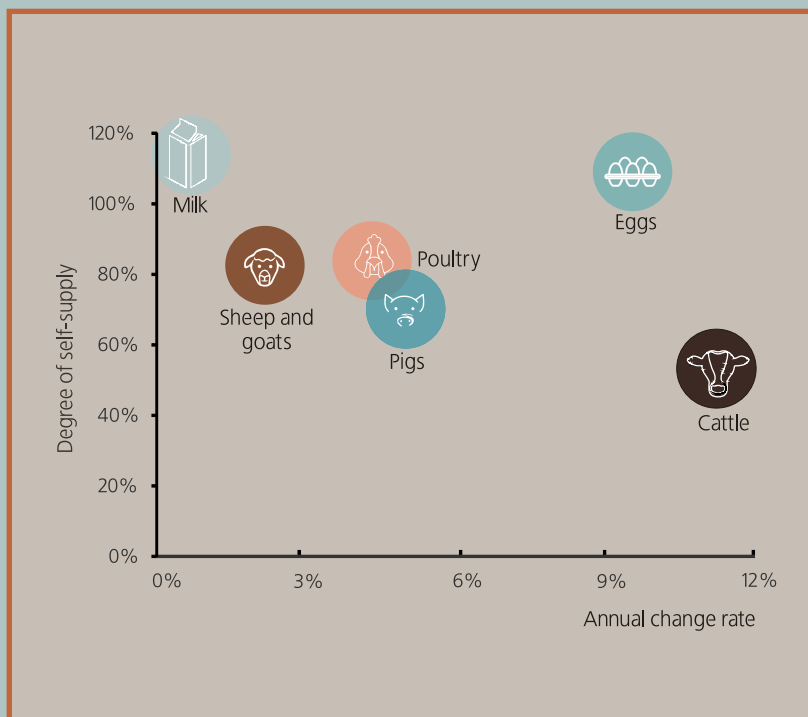


315 875 Million Euro
▲ 2,3%
than in 2014

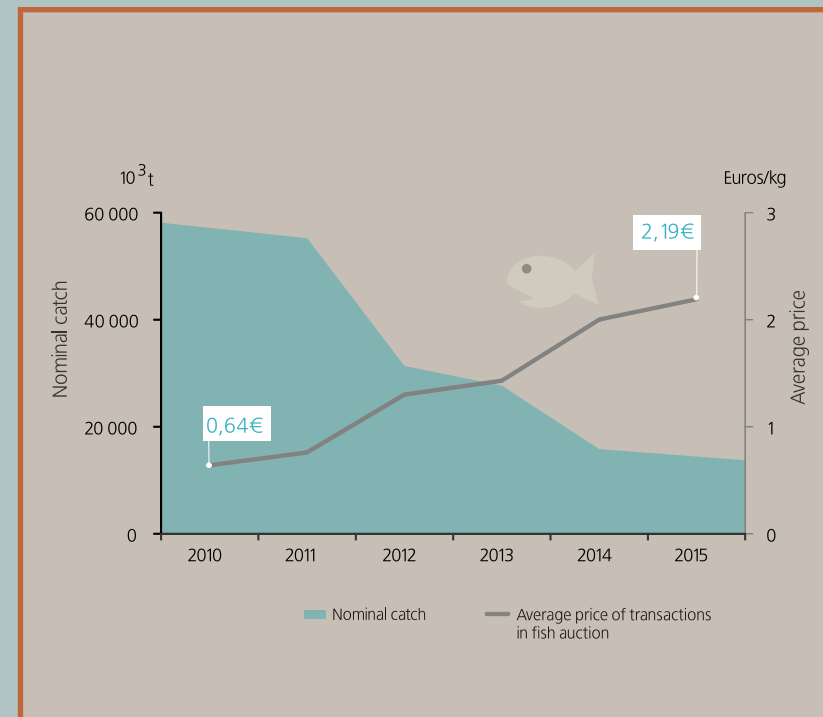
GVA and GVA by person employed of non-financial companies



Degree of self-supply and animal production, 2015



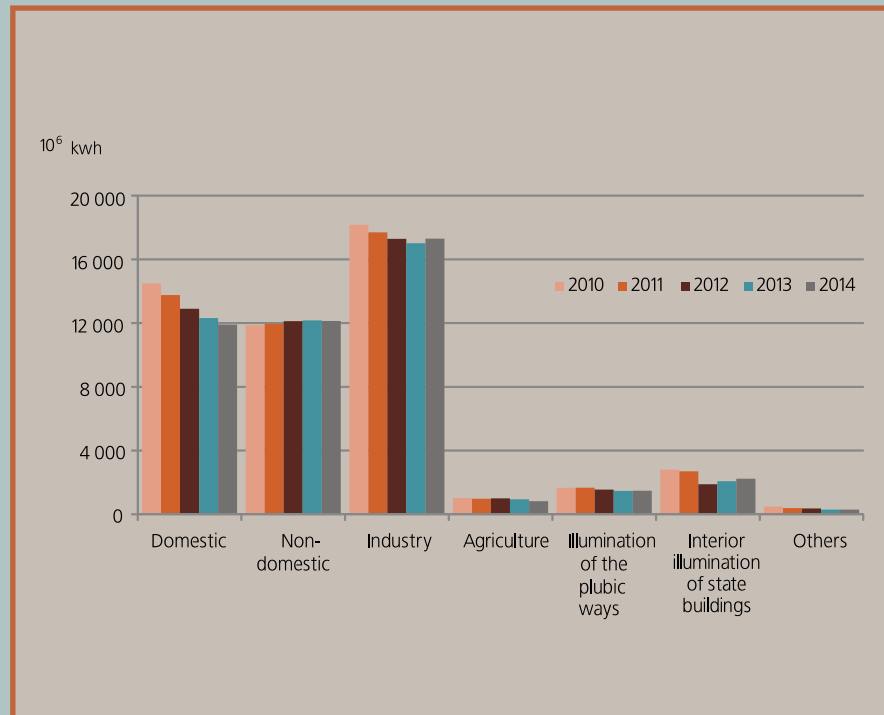
Sardine nominal catch and average price of transactions in fish auction

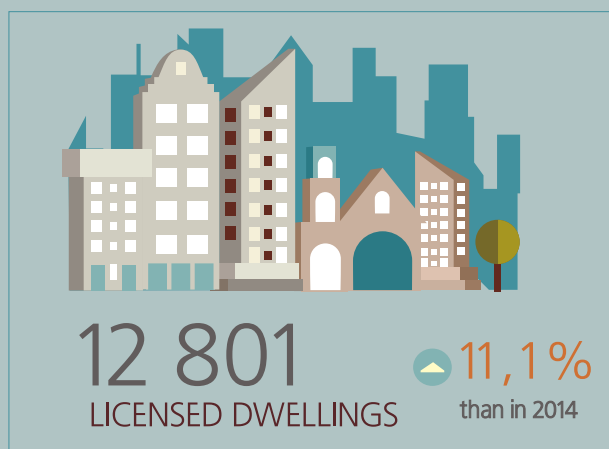


Statistics Portugal, Animal products supply balance sheet;
 Statistics Portugal, Incubation activity and hatcheries survey;
 Statistics Portugal, Egg production for consumption survey;
 Statistics Portugal, Animal livestock survey;
 Statistics Portugal, Milk collection and dairy products survey

General Directorate of Natural Resources, Safety and Maritime Services; Regional Directorate of Fisheries (Região Autónoma dos Açores);
 Regional Directorate of Fisheries (Região Autónoma da Madeira)

Consumption of electric energy by type of consumption



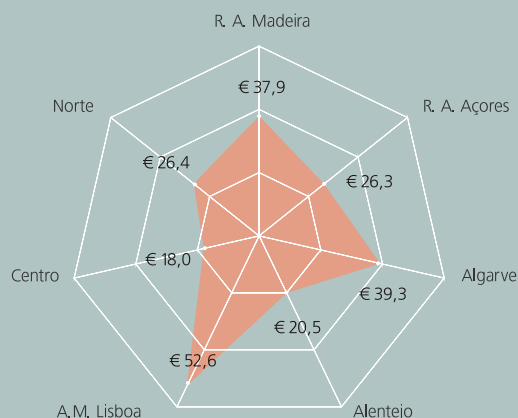


Completed buildings

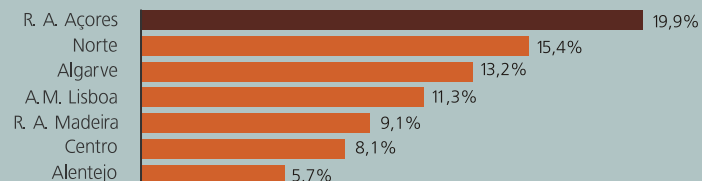


Revenue per available room (Rev Par) in tourism accommodation, by region NUTS 2, 2015

Portugal € 35,0 ▲ 11,2% than in 2014



ANNUAL GROWTH RATE



OVERNIGHT STAYS ▶ 53,2 Million
 IN TOURISM ACCOMMODATION ▲ 9,1%

Residents 16,2 Million ▲ 8,4% than in 2014



Non Residents 37,0 Million ▲ 9,5% than in 2014

of which:

UNITED KINGDOM (+10,8%)



GERMANY (+12,7%)



SPAIN (+5,5%)



FRANCE (+14,2%)



THE NETHERLANDS (+6,3%)



🛏 = 1 Million of overnight stays

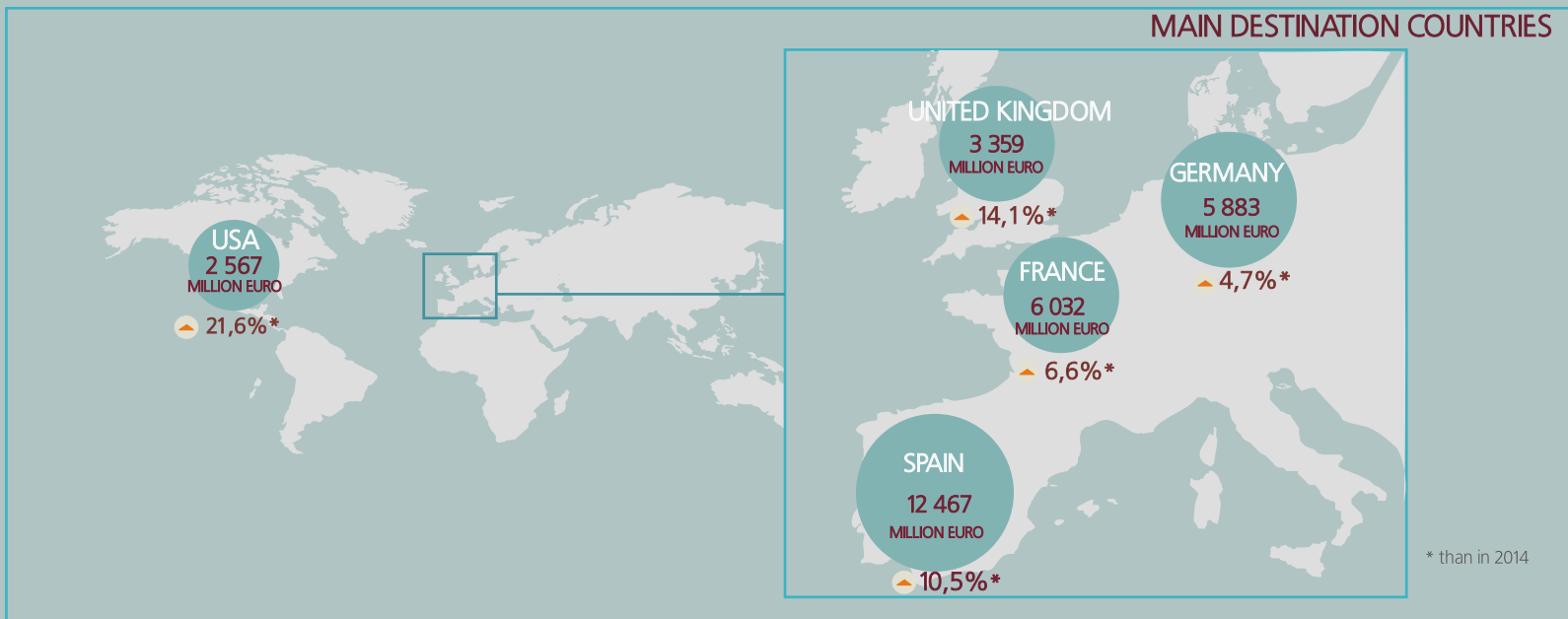
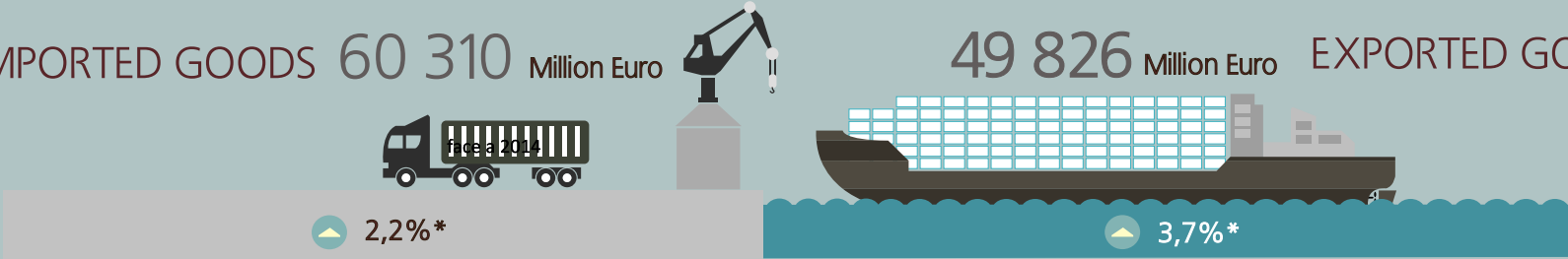
Total traffic of passengers in the national airports, 2015



INTERNATIONAL TRADE OF GOODS

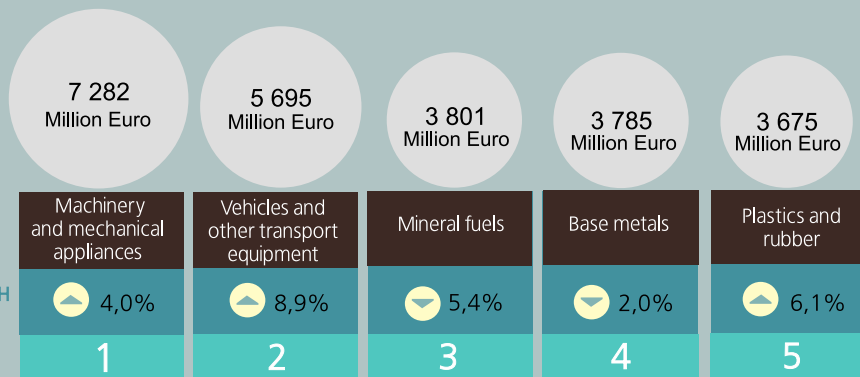
IMPORTED GOODS 60 310 Million Euro

49 826 Million Euro EXPORTED GOODS

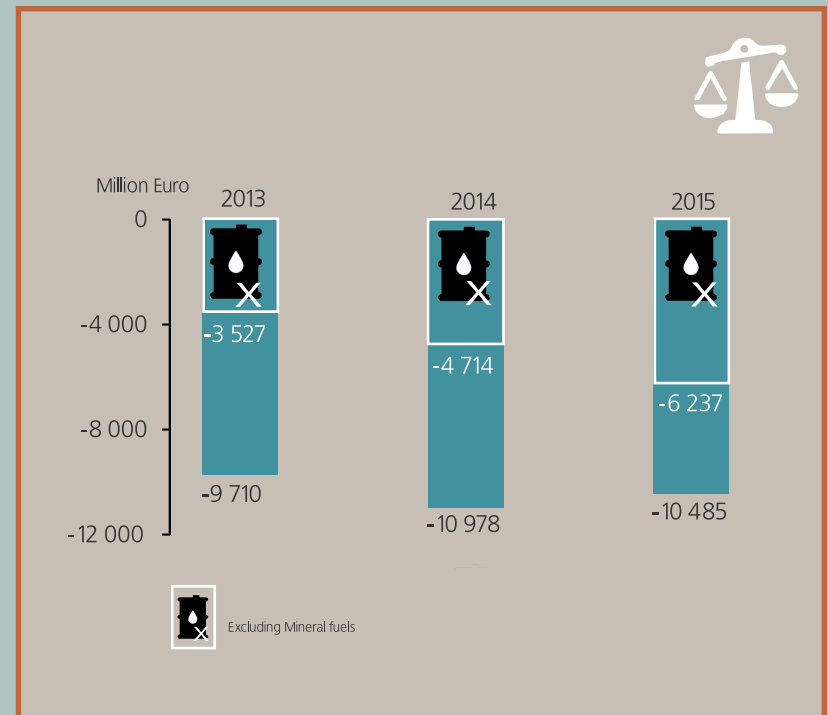


Main groups of **exported** goods, 2015

TOP 5 ▶ 48,6% of the total exported goods



TRADE BALANCE OF GOODS



Sales and persons employed of relevant size units

