

23 August, 2010

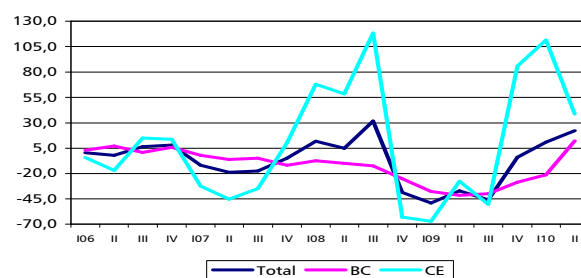
## New Orders received in Construction Second Quarter 2010

### Index of Orders in Construction and Public Works accelerates

New orders in construction and public works increased 22.1% in the second quarter of 2010 on a year earlier (11.0% in the previous quarter). This growth was significantly influenced by the public component of the segment of Buildings concerning school buildings. Excluding this component, orders received by construction increased 8.5% in year-on-year terms. Quarterly and four quarters moving average change rates stood at 19.0% (8.2% in the same quarter of the previous year) and -14.4% (-26.9% in the first quarter of 2010), respectively.

New orders in construction and public works presented an annual change rate of 22.1%% in the second quarter of 2010 (11.0% in the previous quarter). The Buildings segment recorded in the second quarter of 2010 a growth rate of 12.2% (-21.4% in the first quarter of 2010), significantly influenced by the growth of the public school buildings. Excluding this component, this segment decreased 9.6%. Civil Engineering grew 38.5%, down from the 111.5% increase observed in the first quarter of 2010.

**New Orders Index in Construction**  
Year on year change, %



Comparing with the previous quarter, the index of new orders in construction in the second quarter of 2010 increased 19.0% (5.8% in the previous quarter and 8.2% in 2<sup>nd</sup> quarter 2009).

The average change rate for the last four quarters was -14.4%, 12.5 percentage points higher than in the previous period.

