



INSTITUTO NACIONAL DE ESTATÍSTICA
STATISTICS PORTUGAL

press release



February 13, 2023
TRANSPORT ACTIVITIES
Air Transport Flash Statistics
December 2022

THE MOVEMENT OF PASSENGERS AT NATIONAL AIRPORTS MORE THAN DOUBLED IN 2022, BUT STILL NOT REACHING 2019 LEVELS

In **December 2022**, 4.1 million passengers and 18.3 thousand tonnes of freight and mail were handled at national airports, corresponding to year-on-year variations of +53.0% and -7.4%, respectively.

The movement of passengers remained above 2019 levels, increasing of 4.0% (+3.0% in November and +4.0% in October). The movement of freight and mail decreased by 6.4% (-1.5% in November and -3.4% in October).

In December 2022, there was a daily average of 69.4 thousand passengers disembarked at national airports (65.6 thousand in the previous month), exceeding by 4.9% that recorded in December 2019.

In **2022** (preliminary results), 217.6 thousand commercial aircraft landed at national airports (+61.7% vis-à-vis 2021) and 56.8 million passengers were handled (+121.7%). The freight and mail movement increased by 16.9%, reaching 222.9 thousand tonnes. Compared with 2019, there were variations of -4.5%, -5.6% and +5.8%, in the same order.

In 2022, the United Kingdom was the main country of origin and destination of flights (2nd position in 2021 and 2020), recording increases of 213.5% in the number of disembarked passengers and 218.7% in the number of embarked passengers, surpassing France, which occupied the 2nd position. Spain occupied the 3rd position, surpassing Germany, which was in the 4th position. Italy ranked 5th among the main countries of origin and destination, that in 2021 and 2020 was occupied by Switzerland.

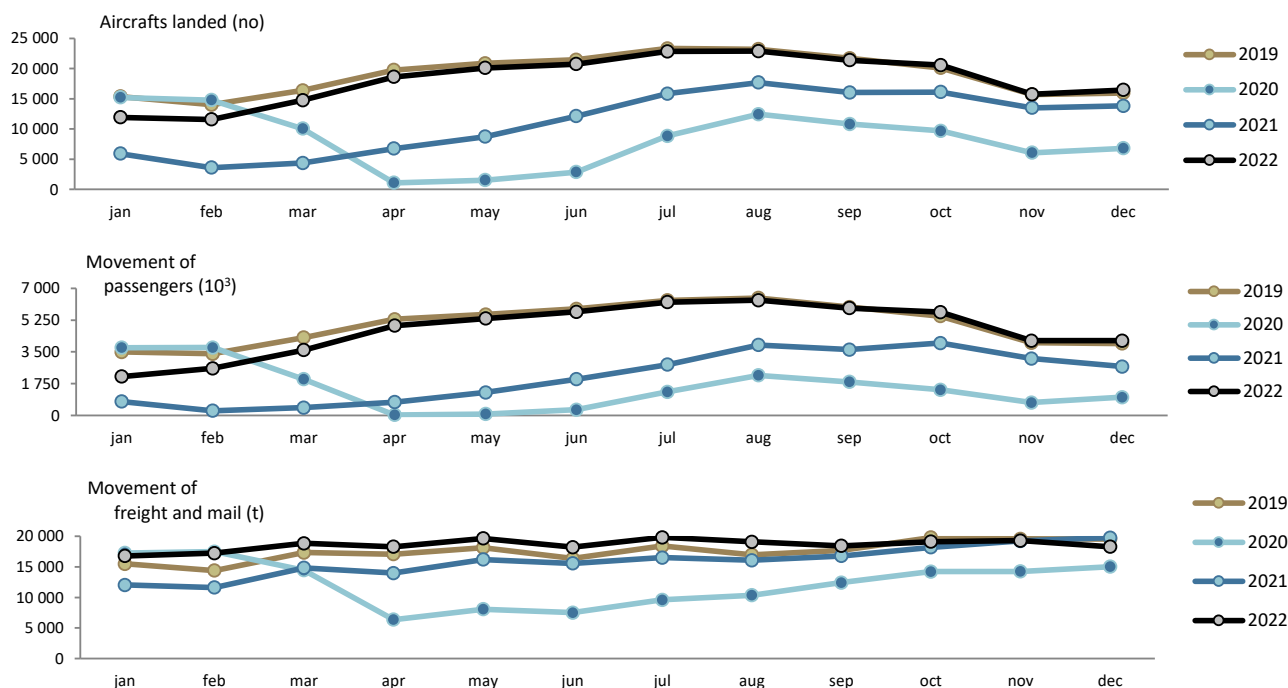
Monthly traffic at national airports

In **December 2022**, 16.5 thousand commercial aircrafts landed at national airports, corresponding to 4.1 million passengers (embarked, disembarked and direct transits) and 18.3 thousand tonnes of freight and mail were handled (+18.9%, +53.0% and -7.4%, respectively, compared to December 2021).

Compared to December 2019, there were increases of 3.0% in the number of aircrafts landed and 4.0% in the movement of passengers, with the movement of freight and mail decreasing by 6.4% (+0.3%, +3.0% and -1.5% in the previous month, respectively).

TRANSPORT ACTIVITIES - Air transport flash statistics – December 2022

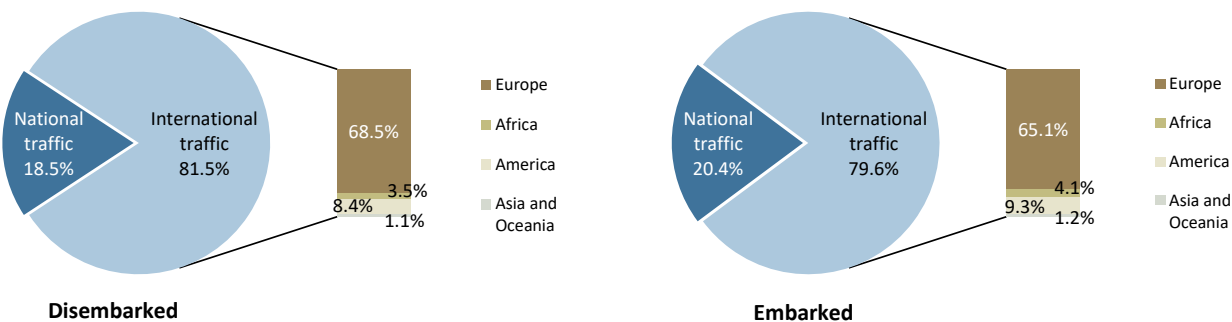
Figure 1. Aircrafts landed, passengers and freight/mail movement at national airports



Source: Survey to airports and aerodromes (ANA/ANAC/Statistics Portugal)

Considering the total number of passengers disembarked in December 2022, 81.5% corresponded to international traffic (80.0% in the same month of 2021), the majority coming from the European continent (68.5% of the total). Regarding embarked passengers, 79.6% corresponded to international traffic (77.7% in December 2021), with the main destination being airports at the European continent (65.1% of the total).

Figure 2. Proportion of passengers disembarked and embarked at national airports by nature of traffic – December 2022



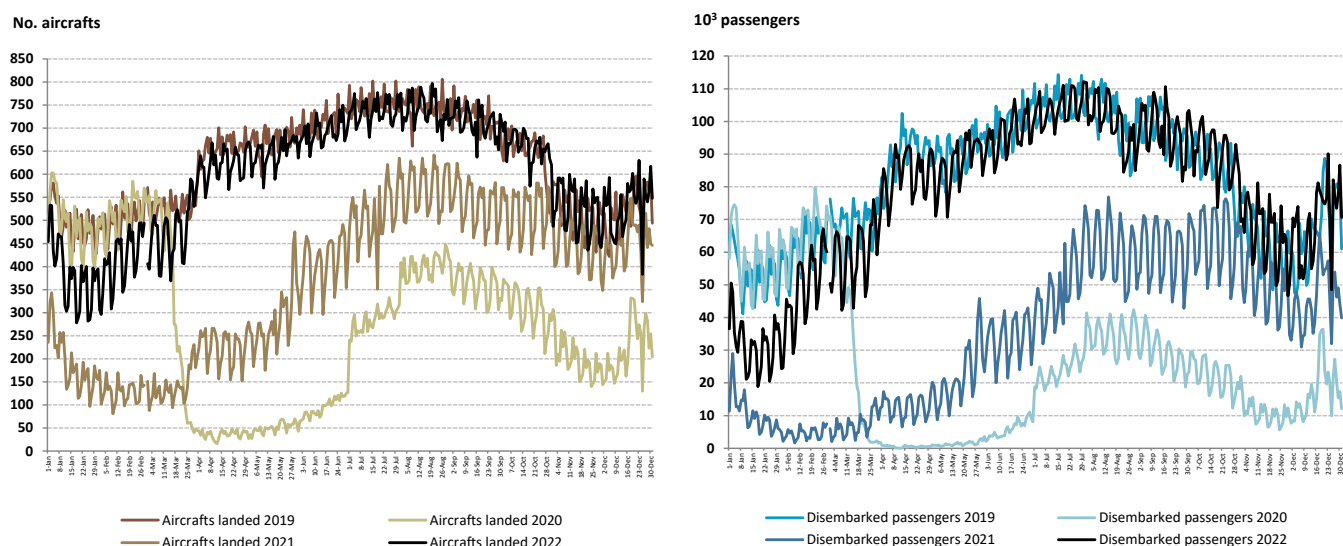
Source: Survey to airports and aerodromes (ANA/ANAC/Statistics Portugal)



The daily movement of aircrafts and passengers is typically heavily influenced by seasonal and weekly cycle fluctuations but was significantly affected by the impact of the pandemic in 2020 and 2021, as shown in the figure below.

In 2022, the levels were approaching those recorded in the pre-pandemic period, having recorded, for the first time, in October a daily average of passengers disembarked higher than that observed in the same period of 2019 (90.7 thousand; +5.6% compared with 2019). This trend remained in November (65.6 thousand; +2.2%) and in December (69.4 thousand; +4.9%).

Figure 3. Aircrafts landed and disembarked passengers at national airports – daily



Source: Survey to airports and aerodromes (ANA/ANAC/Statistics Portugal)

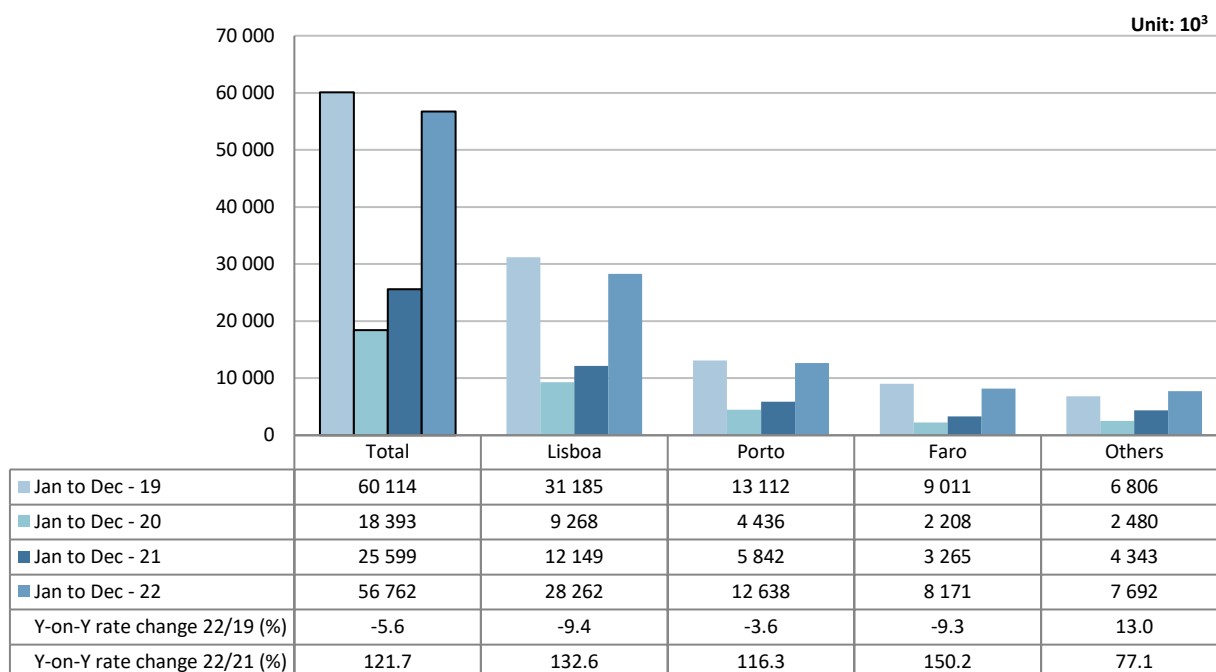
Accumulated traffic at national airports

In 2022 (preliminary results), 217.6 thousand commercial aircraft landed at national airports (+61.7% vis-à-vis 2021) and 56.8 million passengers were handled (+121.7%). The freight and mail movement increased by 16.9%, reaching 222.9 thousand tonnes. Comparing with 2019, there were variations of -4.5%, -5.6% and +5.8%, in the same order.

The movement of passengers in Lisboa airport corresponded to 49.8% of total handled passengers (28.3 million), +132.6% vis-à-vis 2021 (-9.4% compared with 2019). Considering the three airports with the highest annual passenger traffic, Faro recorded the major increase compared to 2021 (+150.2%) and Porto recorded the closest approach to 2019 levels (-3.6%).



Figure 4. Movement of passengers at national airports



Source: Survey to airports and aerodromes (ANA/ANAC/Statistics Portugal)

Considering the volume of passengers disembarked and embarked on international flights in 2022, the United Kingdom was the main country of origin and destination of flights (2nd position in 2021 and 2020), recording increases of 213.5% in the number of disembarked passengers and 218.7% in the number of embarked passengers, surpassing France, which occupied the 2nd position. Spain occupied the 3rd position, surpassing Germany, which was in the 4th position. Italy ranked 5th among the main countries of origin and destination, that in 2021 and 2020 was occupied by Switzerland.

Table 1. Main countries of origin and destination of flights with passengers at national airports

Ranking	Country of origin (of the flight)	Jan to Dec 2022	
		Passengers disembarked (10 ³)	Y-on-Y growth rate (%)
1	United Kingdom	4 075.4	213.5
2	France	3 756.9	111.0
3	Spain	2 716.0	185.0
4	Germany	2 225.6	114.1
5	Italy	1 210.7	162.8

Ranking	Country of destination (of the flight)	Jan to Dec 2022	
		Passengers embarked (10 ³)	Y-on-Y growth rate (%)
1	United Kingdom	4 048.0	218.7
2	France	3 745.8	111.2
3	Spain	2 664.9	181.3
4	Germany	2 226.6	119.7
5	Italy	1 193.5	161.7

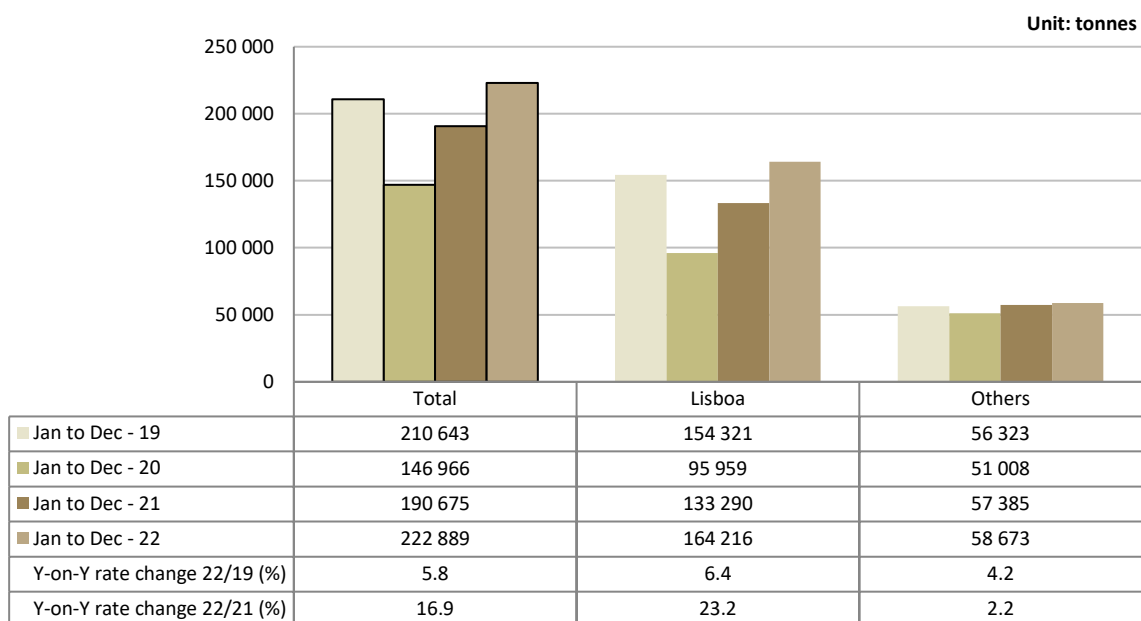
Source: Survey to airports and aerodromes (ANA/ANAC/Statistics Portugal)



In 2022, there was an increase of 16.9% in freight and mail handled at national airports (+5.8% compared with 2019). The movement of freight and mail at Lisboa airport represented 73.7% of the total, corresponding to 164.2 thousand tonnes (+23.2% vis-à-vis 2021).

Considering the group of other airports, the movement of freight and mail increased by 2.2% (+4.2% compared with 2019).

Figure 5. Freight and mail movement at national airports



Source: Survey to airports and aerodromes (ANA/ANAC/Statistics Portugal)



INSTITUTO NACIONAL DE ESTATÍSTICA
STATISTICS PORTUGAL

press release



METHODOLOGICAL NOTES

In this Press Release the following statistical data are used:

2022: preliminary results;

2019, 2020 e 2021: definitive results.

Main national airports (considered in this Press Release as national airports): Lisboa, Porto, Faro, Ponta Delgada, Funchal, Porto Santo, Beja, Horta, Flores, Santa Maria, Terceira (Lajes), Pico, Graciosa, São Jorge, Corvo, Portimão, Bragança, Cascais, Vila Real and Viseu.

SOURCES: Survey to airports and aerodromes (ANA/ANAC/Statistics Portugal)

MAIN CONCEPTS:

Commercial aviation - Air transport flight performed for the public transport of passengers, freight or mail, for remuneration and for hire.

Commercial air traffic - Movement of aircrafts, passengers, freight and mail in commercial aviation.

Monthly indicators at Statistics Portugal portal:

[Aircrafts landed \(No.\) in airports by Geographic localization, Type of traffic and Nature of traffic; Monthly](#)

[Aircrafts landed \(No.\) in airports by Continent of origin; Monthly](#)

[Aircrafts unglued \(No.\) in airports by Geographic localization, Type of traffic and Nature of traffic; Monthly](#)

[Disembarked passengers \(No.\) in airports by Geographic localization, Type of traffic and Nature of traffic; Monthly](#)

[Disembarked passengers \(No.\) in Airports by Continent of origin; Monthly](#)

[Embarked passengers \(No.\) in airports by Geographic localization, Type of traffic and Nature of traffic; Monthly](#)

[Embarked passengers \(No.\) in airports by Destination continent; Monthly](#)

[Passengers in direct transit \(No.\) in airports by Geographic localization, Type of traffic and Nature of traffic; Monthly](#)

[Disembarked load \(t\) in airports by Geographic localization, Type of traffic and Nature of traffic; Monthly](#)

[Embarked load \(t\) in airports by Geographic localization, Type of traffic and Nature of traffic; Monthly](#)

[Disembarked mail \(t\) in airports by Geographic localization, Type of traffic and Nature of traffic; Monthly](#)

[Embarked mail \(t\) in airports by Geographic localization, Type of traffic and Nature of traffic; Monthly](#)



INSTITUTO NACIONAL DE ESTATÍSTICA
STATISTICS PORTUGAL

press release



ACRONYMS AND DESIGNATIONS

ANA	Portugal Airports, S.A.
ANAC	National Civil Aviation Authority
INE	Statistics Portugal

Next Press Release (monthly) - Air Transport Flash Statistics – March 13, 2023

Next Press Release (quarterly) - Transport activities (4th Q 2022) - March 8, 2023
