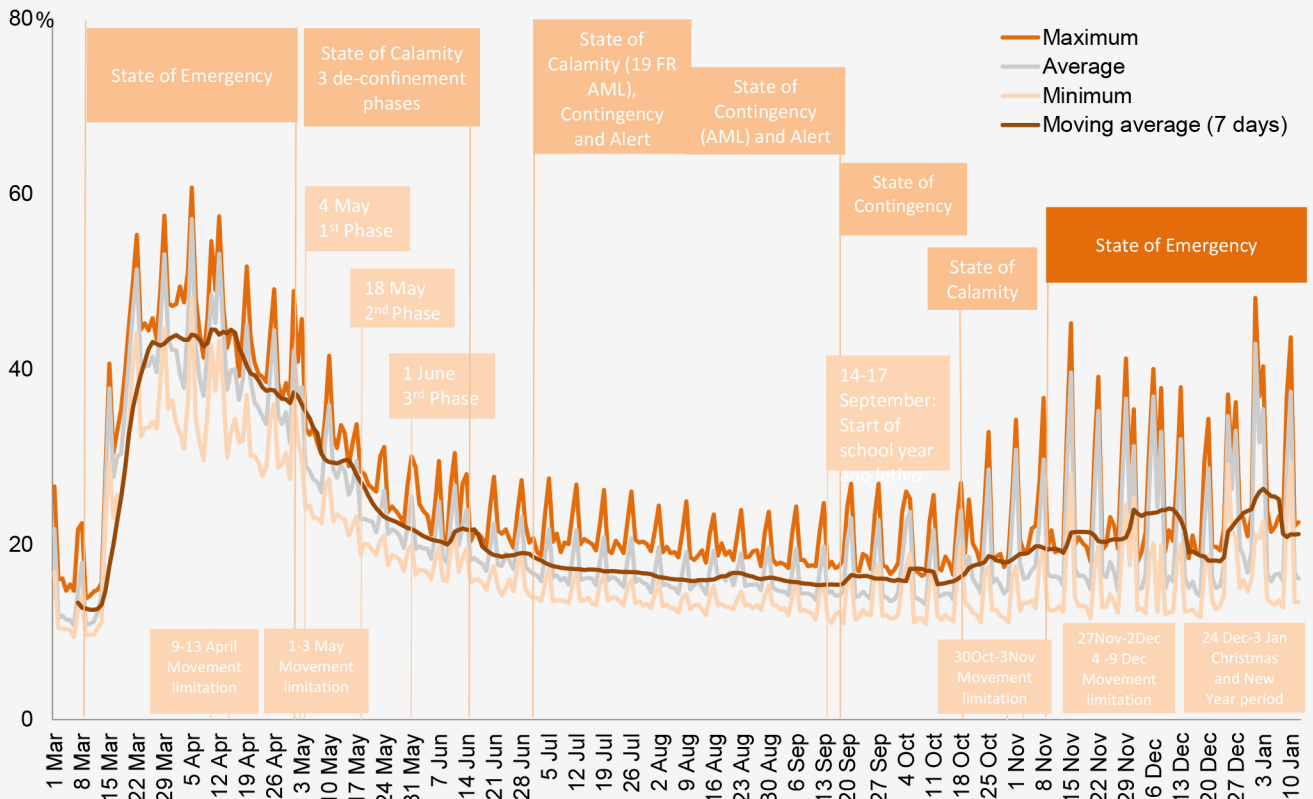


Population mobility indicators at regional level: an analysis based on information from Facebook's "Data for Good" Initiative

Taking advantage of Facebook's "[Data for Good](#)" initiative, the figure below shows the proportion of the population "staying put" between 1 March and 12 January, namely the minimum, average and maximum values calculated based on the NUTS 3 sub-regions. The proportion of population that "stayed put" is based on the number of Facebook users associated with a single reference grid of 600mx600m during 8 am and 8 pm on day x, requiring at least three occurrences during that time period.

It is possible to observe that on Sundays there is generally less mobility of the population than on other days of the week. It is also noteworthy that after the first confirmed cases of COVID-19 and following the declaration of the first State of Emergency, there is a decrease in the mobility of the population, followed by an increase in the levels of mobility after the implementation of the de-confinement measures, the first phase of which started on 4 May. More recently, and considering the moving average of the last 7 days, there has been an overall reduction in average mobility levels following the declaration of the State of Emergency on November 9 and its successive renewal. This reduction continued until the days before Christmas where there was an increase in mobility due to the general cancelling of measures restricting movement between municipalities, and is subsequently resumed, highlighting the decrease in mobility levels on the days with limitations of movement during the New Year period.

Proportion of the population "staying put" between 1 March and 12 January – minimum, average and maximum values of NUTS 3 sub-regions



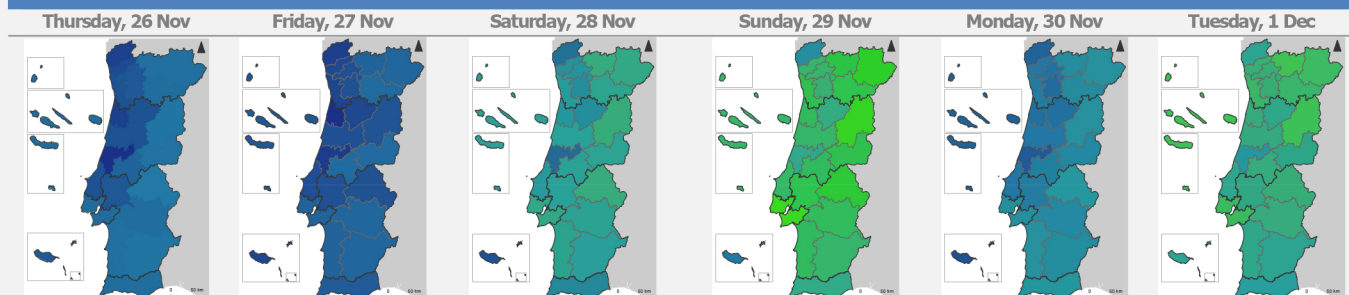
Source: Facebook's "Data for Good" Initiative. Data provided by Carnegie Mellon University. Note: The dates marked on the graph axis correspond to Sundays.

The following figure presents the population mobility levels for six days a week (Thursday, Friday, Saturday, Sunday, Monday and Tuesday) associated with the periods with measures of general application on the limitation of movement between municipalities during the month of December 2020 and early January 2021. There are, globally, lower levels of mobility on days corresponding to Sundays, as well as on days of the week with limitation of movement between municipalities and, in particular, on days corresponding to holidays, such as Tuesdays 1 and 8 December, Thursday 25 December and Friday 1 January 2021. It is also worth mentioning the decrease in mobility levels on Saturday, January 2, due to circulation restrictions.

Proportion of the population "staying put" on Thursdays, Fridays, Saturdays, Sundays, Mondays and Tuesdays associated with periods with measures of general application on the movement between municipalities during the month of December 2020 and early January 2021

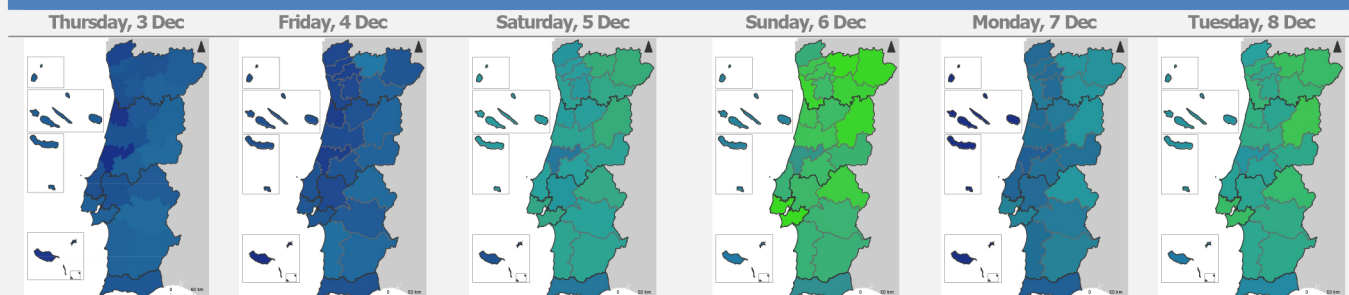
December 1st Holiday ("Restauração da Independência")

Limitation of movement between municipalities between 11:00 pm on November 27 and 5:00 am on December 2



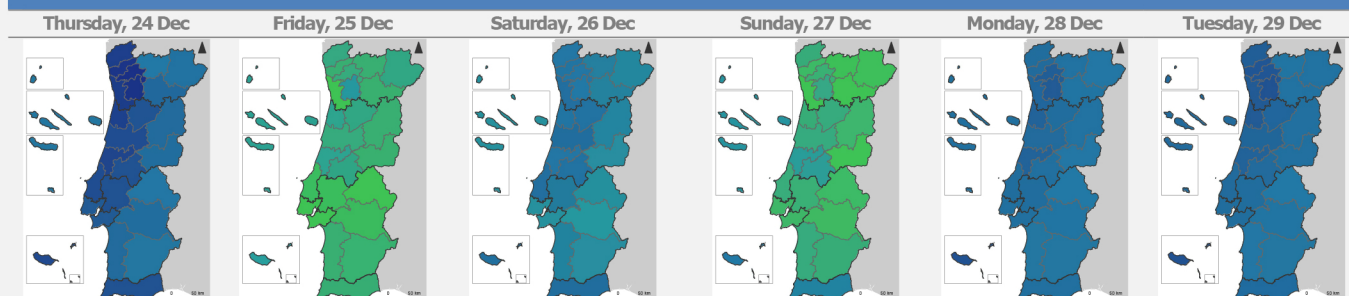
December 8th Holiday ("Dia da Imaculada Conceição")

Limitation of movement between municipalities between 11:00 pm on December 4 and 11:59 pm on December 8



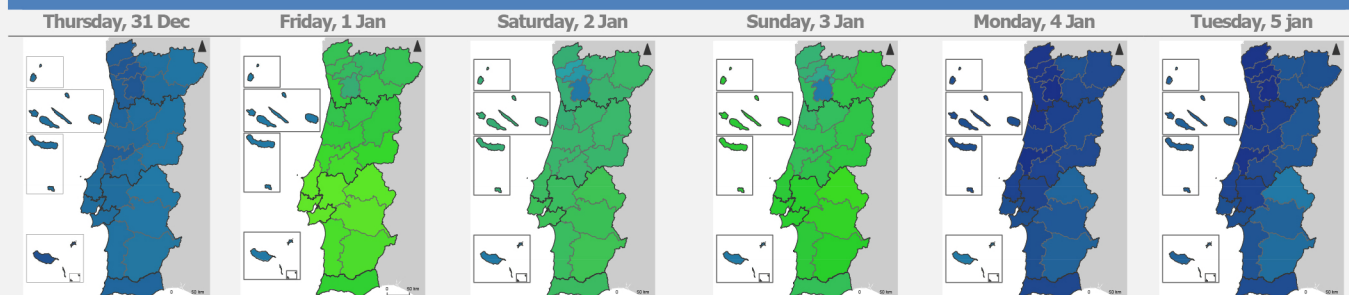
Christmans period



No limitation of movement between municipalities between 23 and 26 December



New Year period

Limitation of movement between municipalities between 00h00 of December 31 and 05h00 of January 4



Territorial limits
 NUTS II  NUTS III
60,7% 9,7%
